



Rabbit Anti-phospho-MYL6 (Tyr29+Ser30) antibody

SL5478R

Product Name:	phospho-MYL6 (Tyr29+Ser30)
Chinese Name:	磷酸化肌球蛋白轻链6抗体
Alias:	MYL6 (phospho-Tyr29+Ser30); MYL6 (phospho Y29+S30); ESMLC; LC 17; LC17; LC17 GI; LC17 NM; LC17A; LC17B; MLC 3; MLC-3; MLC1SM; MLC3; MLC3NM; MLC3SM; MYL 6; MYL6; MYL6_HUMAN; Myosin light chain 3; Myosin light chain 6 alkali smooth muscle and non muscle; Myosin light chain A3; Myosin light chain alkali 3; Myosin light polypeptide 6 alkali smooth muscle and non muscle; Myosin light polypeptide 6; Smooth muscle and non muscle myosin alkali light chain; Smooth muscle and nonmuscle myosin light chain alkali 6; 17 kDa myosin light chain.
Organism Species:	Rabbit
Clonality:	Polyclonal
React Species:	Human, Mouse, Rat, Chicken, Pig, Sheep,
Applications:	ELISA=1:500-1000IHC-P=1:400-800IHC-F=1:400-800IF=1:100-500 (Paraffin sections need antigen repair) not yet tested in other applications. optimal dilutions/concentrations should be determined by the end user.
Molecular weight:	17kDa
Cellular localization:	The nucleuscytoplasmic
Form:	Lyophilized or Liquid
Concentration:	1mg/ml
immunogen:	KLH conjugated Synthesised phosphopeptide derived from human MYL6 around the phosphorylation site of Tyr29+Ser30:IL(p-Y)(p-S)Q-NH2
Lsotype:	IgG
Purification:	affinity purified by Protein A
Storage Buffer:	0.01M TBS(pH7.4) with 1% BSA, 0.03% Proclin300 and 50% Glycerol.
Storage:	Store at -20 °C for one year. Avoid repeated freeze/thaw cycles. The lyophilized antibody is stable at room temperature for at least one month and for greater than a year

	when kept at -20°C. When reconstituted in sterile pH 7.4 0.01M PBS or diluent of antibody the antibody is stable for at least two weeks at 2-4 °C.
PubMed:	PubMed
Product Detail:	<p>Myosin is a hexameric ATPase cellular motor protein. It is composed of two heavy chains, two nonphosphorylatable alkali light chains, and two phosphorylatable regulatory light chains. This gene encodes a myosin alkali light chain that is expressed in smooth muscle and non-muscle tissues. Genomic sequences representing several pseudogenes have been described and two transcript variants encoding different isoforms have been identified for this gene.</p> <p>Function: Regulatory light chain of myosin. Does not bind calcium.</p> <p>Subunit: Myosin is a hexamer of 2 heavy chains and 4 light chains.</p> <p>Subcellular Location: Cytoplasm. Nucleus.</p> <p>Similarity: Contains 3 EF-hand domains.</p> <p>SWISS: P60660</p> <p>Gene ID: 4637</p> <p>Database links:</p> <p>Entrez Gene: 4637Human</p> <p>Entrez Gene: 17904Mouse</p> <p>Entrez Gene: 396807Pig</p> <p>Entrez Gene: 362816Rat</p> <p>Entrez Gene: 685867Rat</p> <p>Omim: 609931Human</p> <p>SwissProt: P60661Cow</p> <p>SwissProt: P60660Human</p> <p>SwissProt: Q60605Mouse</p> <p>SwissProt: P60662Pig</p>

[SwissProt: Q64119](#)Rat

[Unigene: 632717](#)Human

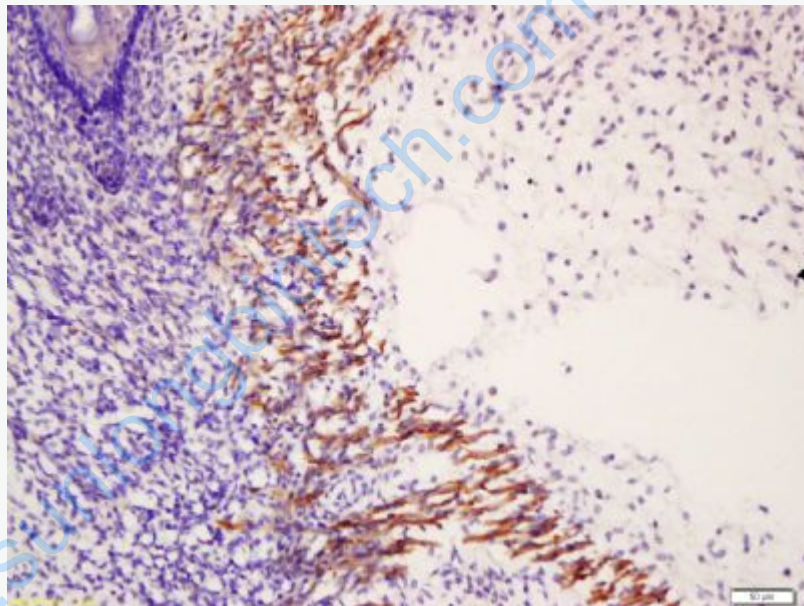
[Unigene: 337074](#)Mouse

[Unigene: 146093](#)Rat

Important Note:

This product as supplied is intended for research use only, not for use in human, therapeutic or diagnostic applications.

Picture:



Tissue/cell: muscle of mouse embryo; 4% Paraformaldehyde-fixed and paraffin-embedded;

Antigen retrieval: citrate buffer (0.01M, pH 6.0), Boiling bathing for 15min; Block endogenous peroxidase by 3% Hydrogen peroxide for 30min; Blocking buffer (normal goat serum,C-0005) at 37°C for 20 min;

Incubation: Anti-phospho-MYL6(Tyr29+Ser30) Polyclonal Antibody,

Unconjugated(SL5478R) 1:200, overnight at 4°C, followed by conjugation to the

	secondary antibody(SP-0023) and DAB(C-0010) staining
--	--

www.sunlongbiotech.com