



Rabbit Anti-phospho-14-3-3 epsilon (Thr232) antibody

SL5590R

Product Name:	phospho-14-3-3 epsilon (Thr232)
Chinese Name:	磷酸化14-3-3E蛋白抗体
Alias:	YWHAE(phospho T232); 14-3-3 epsilon (phospho Thr232); 14-3-3 epsilon; 14 3 3 E; 14 3 3 epsilon; 14 3 3E; 14-3-3 E; 14-3-3 protein epsilon; 14-3-3E; 14-3-3ε; 1433E_HUMAN; KCIP 1; KCIP-1; KCIP1; MDCR; MDS; mitochondrial import stimulation factor L subunit; protein kinase C inhibitor protein-1; Protein kinase C inhibitor protein1; Tyrosine 3 monooxygenase/tryptophan 5 monooxygenase activation protein, epsilon polypeptide; tyrosine 3/tryptophan 5 -monooxygenase activation protein epsilon polypeptide; Tyrosine 3/tryptophan 5 monooxygenase activation protein epsilon polypeptide; YWHAE.
Organism Species:	Rabbit
Clonality:	Polyclonal
React Species:	Human,Mouse,Rat,Cow,Sheep,
Applications:	ELISA=1:500-1000IHC-P=1:400-800IHC-F=1:400-800Flow-Cyt=1μg/TestIF=1:100-500 (Paraffin sections need antigen repair) not yet tested in other applications. optimal dilutions/concentrations should be determined by the end user.
Molecular weight:	29kDa
Cellular localization:	The nucleus
Form:	Lyophilized or Liquid
Concentration:	1mg/ml
immunogen:	KLH conjugated Synthesised phosphopeptide derived from human 14-3-3E around the phosphorylation site of Thr232:LW(p-T)SD
Lsotype:	IgG
Purification:	affinity purified by Protein A
Storage Buffer:	0.01M TBS(pH7.4) with 1% BSA, 0.03% Proclin300 and 50% Glycerol.
Storage:	Store at -20 °C for one year. Avoid repeated freeze/thaw cycles. The lyophilized

	antibody is stable at room temperature for at least one month and for greater than a year when kept at -20°C. When reconstituted in sterile pH 7.4 0.01M PBS or diluent of antibody the antibody is stable for at least two weeks at 2-4 °C.
PubMed:	PubMed
Product Detail:	<p>Adapter protein implicated in the regulation of a large spectrum of both general and specialized signaling pathway. Binds to a large number of partners, usually by recognition of a phosphoserine or phosphothreonine motif. Binding generally results in the modulation of the activity of the binding partner.</p> <p>Function: Adapter protein implicated in the regulation of a large spectrum of both general and specialized signaling pathways. Binds to a large number of partners, usually by recognition of a phosphoserine or phosphothreonine motif. Binding generally results in the modulation of the activity of the binding partner.</p> <p>Subunit: Homodimer. Heterodimerizes with YWHAZ. Interacts with NDEL1, RGNEF and TIAM2. Interacts with HCV core protein. Interacts with ABL1 (phosphorylated form); the interaction retains it in the cytoplasm. Weakly interacts with CDKN1B. Interacts with GAB2. Interacts with phosphorylated GRB10. Interacts with PKA-phosphorylated AANAT. Interacts with the phosphorylated (by AKT1) form of SRPK2.</p> <p>Subcellular Location: Cytoplasm. Melanosome. Note=Identified by mass spectrometry in melanosome fractions from stage I to stage IV.</p> <p>Similarity: Belongs to the 14-3-3 family.</p> <p>SWISS: P62258</p> <p>Gene ID: 7531</p> <p>Database links:</p> <p>Entrez Gene: 7531Human Entrez Gene: 282125Cow Entrez Gene: 22627Mouse Entrez Gene: 29753Rat Oimim: 605066Human SwissProt: P62261Cow</p>

[SwissProt: P62258](#)Human

[SwissProt: P62259](#)Mouse

[SwissProt: P62260](#)Rat

[Unigene: 513851](#)Human

[Unigene: 234700](#)Mouse

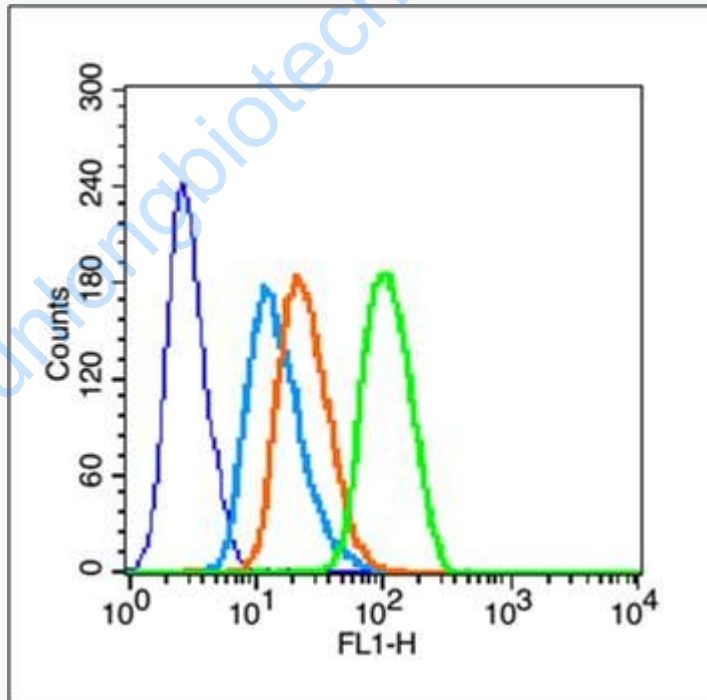
[Unigene: 471625](#)Mouse

[Unigene: 4225](#)Rat

Important Note:

This product as supplied is intended for research use only, not for use in human, therapeutic or diagnostic applications.

Picture:



Blank control (blue line): MCF7, fixed with 70% ethanol (Overnight at 4°C) and then permeabilized with 90% ice-cold methanol for 30 min on ice

Primary Antibody (green line): Rabbit Anti-phospho-14-3-3 epsilon (Thr232) antibody (SL5590R), Dilution: 3µg /10⁶ cells;

Isotype Control Antibody (orange line): Rabbit IgG .

Secondary Antibody (white blue line): Goat anti-rabbit IgG-FITC,Dilution: 1 μ g

/test.

www.sunlongbiotech.com