



Rabbit Anti-Phospho-Tuberin (Ser1418) antibody

SL5612R

Product Name:	Phospho-Tuberin (Ser1418)
Chinese Name:	磷酸化结节性硬化蛋白抗体
Alias:	TSC2(phospho S1418); Tuberin (Phospho Ser1418); Tuberin (Phospho S1418); Phospho-TSC2 (Ser1418); P-Tuberin/TSC2 (Ser1418); P-TSC2 (Ser1418); FLJ43106; LAM; TSC2; TSC2 HUMAN; TSC4; Tuberin; Tuberous sclerosis 2 protein.
Organism Species:	Rabbit
Clonality:	Polyclonal
React Species:	Human,Mouse,Rat,Chicken,Dog,Pig,Cow,Horse,
Applications:	ELISA=1:500-1000IHC-P=1:400-800IHC-F=1:400-800IF=1:100-500 (Paraffin sections need antigen repair) not yet tested in other applications. optimal dilutions/concentrations should be determined by the end user.
Molecular weight:	200kDa
Cellular localization:	cytoplasmicThe cell membrane
Form:	Lyophilized or Liquid
Concentration:	1mg/ml
immunogen:	KLH conjugated Synthesised phosphopeptide derived from human Tuberin around the phosphorylation site of Ser1418:AR(p-S)QS
Lsotype:	IgG
Purification:	affinity purified by Protein A
Storage Buffer:	0.01M TBS(pH7.4) with 1% BSA, 0.03% Proclin300 and 50% Glycerol.
Storage:	Store at -20 °C for one year. Avoid repeated freeze/thaw cycles. The lyophilized antibody is stable at room temperature for at least one month and for greater than a year when kept at -20°C. When reconstituted in sterile pH 7.4 0.01M PBS or diluent of antibody the antibody is stable for at least two weeks at 2-4 °C.
PubMed:	PubMed
Product Detail:	Tuberin, or TSC2 (Tuberous sclerosis complex), is implicated as a tumor suppressor. It may function in vesicular transport, and may also play a role in the regulation of cell

growth arrest and in the regulation of transcription mediated by steroid receptors. Interaction between hamartin (TSC1) and tuberlin may facilitate vesicular docking. It specifically stimulates the intrinsic GTPase activity of the Ras related protein RAP1A and RAB5, suggesting a possible mechanism for its role in regulating cellular growth. Mutations in tuberlin lead to constitutive activation of RAP1A in tumors. At least three isoforms of Tuberlin exist.

Function:

In complex with TSC1, inhibits the nutrient-mediated or growth factor-stimulated phosphorylation of S6K1 and EIF4EBP1 by negatively regulating mTORC1 signaling. Acts as a GTPase-activating protein (GAP) for the small GTPase RHEB, a direct activator of the protein kinase activity of mTORC1. Implicated as a tumor suppressor. Involved in microtubule-mediated protein transport, but this seems to be due to unregulated mTOR signaling. Stimulates weakly the intrinsic GTPase activity of the Ras-related proteins RAP1A and RAB5 in vitro. Mutations in TSC2 lead to constitutive activation of RAP1A in tumors.

Subunit:

Interacts with TSC1 and HERC1; the interaction with TSC1 stabilizes TSC2 and prevents the interaction with HERC1. May also interact with the adapter molecule RABEP1. The final complex contains TSC2 and RABEP1 linked to RAB5 (Probable). Interacts with HSPA1 and HSPA8. Interacts with DAPK1.

Subcellular Location:

Cytoplasm. Membrane; Peripheral membrane protein. Note=At steady state found in association with membranes.

Tissue Specificity:

Liver, brain, heart, lymphocytes, fibroblasts, biliary epithelium, pancreas, skeletal muscle, kidney, lung and placenta.

Post-translational modifications:

Phosphorylation at Ser-1387, Ser-1418 or Ser-1420 does not affect interaction with TSC1. Phosphorylation at Ser-939 and Thr-1462 by PKB/AKT1 is induced by growth factor stimulation. Phosphorylation by AMPK activates it and leads to negatively regulates the mTORC1 complex. Phosphorylated at Ser-1798 by RPS6KA1; phosphorylation inhibits TSC2 ability to suppress mTORC1 signaling. Phosphorylated by DAPK1.

DISEASE:

Defects in TSC2 are the cause of tuberous sclerosis type 2 (TSC2) [MIM:613254]. TSC2 is an autosomal dominant multi-system disorder that affects especially the brain, kidneys, heart, and skin. It is characterized by hamartomas (benign overgrowths predominantly of a cell or tissue type that occurs normally in the organ) and hamartias (developmental abnormalities of tissue combination). Clinical symptoms can range from benign hypopigmented macules of the skin to profound mental retardation with

intractable seizures to premature death from a variety of disease-associated causes. Defects in TSC2 are a cause of lymphangiomyomatosis (LAM) [MIM:606690]. LAM is a progressive and often fatal lung disease characterized by a diffuse proliferation of abnormal smooth muscle cells in the lungs. It affects almost exclusively young women and can occur as an isolated disorder or in association with tuberous sclerosis complex.

Similarity:

Contains 1 Rap-GAP domain.

SWISS:

P49815

Gene ID:

7249

Database links:

[Entrez Gene: 7249](#)Human

[Entrez Gene: 22084](#)Mouse

[Entrez Gene: 24855](#)Rat

[Omim: 191092](#)Human

[SwissProt: P49815](#)Human

[SwissProt: Q61037](#)Mouse

[SwissProt: P49816](#)Rat

[Unigene: 90303](#)Human

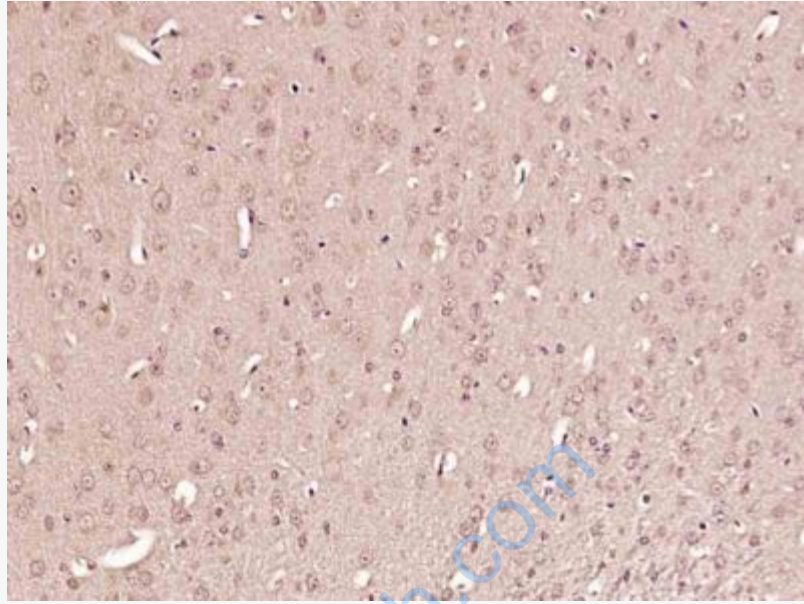
[Unigene: 30435](#)Mouse

[Unigene: 5875](#)Rat

Important Note:

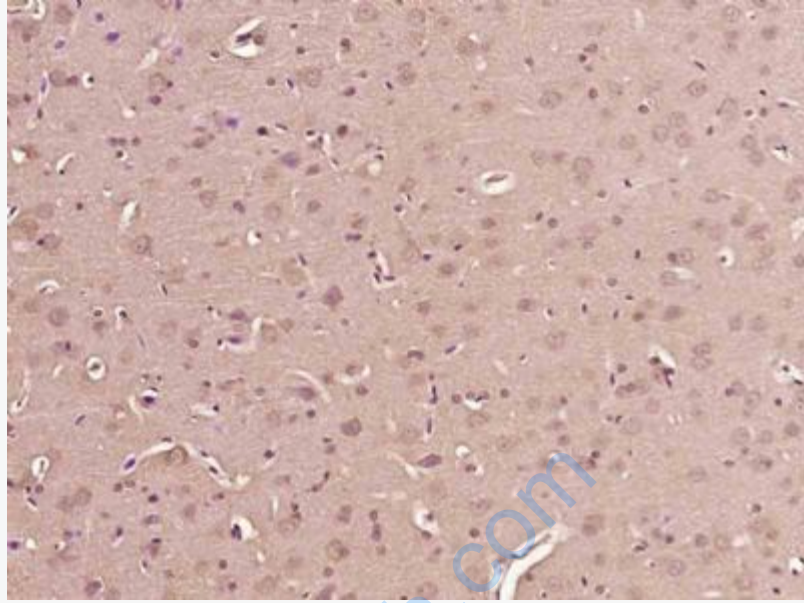
This product as supplied is intended for research use only, not for use in human, therapeutic or diagnostic applications.

Tuberin 为180kD-220的蛋白产生于结节性硬化(TSC-2)位于染色体16的基因。结节性硬化为常染色体疾病已知为斑痣性错构瘤病其特征为广泛性发展呈良性生长,在许多组织与器官中描述为错构瘤。Tuberin被认为在GTPase活动性蛋白中起作用调节细胞内吞与作为Tumour抑制子。Tuberin低水平广泛性表达在大多数组织中,而在皮层神经元、小脑浦肯野氏细胞、脊索运动神经元、胰岛B细胞、心肌、肾脏与皮肤的小血管中表达增加。

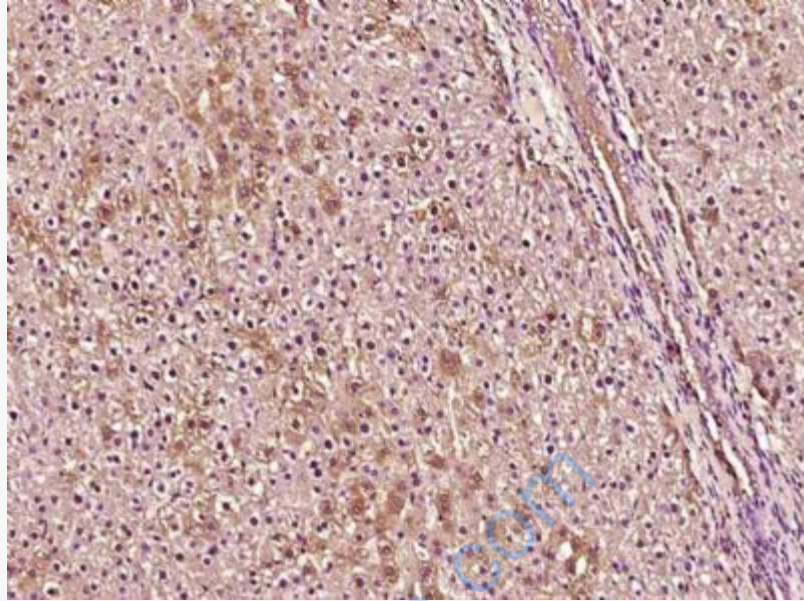


Picture:

Paraformaldehyde-fixed, paraffin embedded (Mouse brain); Antigen retrieval by boiling in sodium citrate buffer (pH6.0) for 15min; Block endogenous peroxidase by 3% hydrogen peroxide for 20 minutes; Blocking buffer (normal goat serum) at 37°C for 30min; Antibody incubation with (Phospho-Tuberin(Ser1418)) Polyclonal Antibody, Unconjugated (SL5612R) at 1:400 overnight at 4°C, followed by operating according to SP Kit(Rabbit) (sp-0023) instructions and DAB staining.



Paraformaldehyde-fixed, paraffin embedded (Rat brain); Antigen retrieval by boiling in sodium citrate buffer (pH6.0) for 15min; Block endogenous peroxidase by 3% hydrogen peroxide for 20 minutes; Blocking buffer (normal goat serum) at 37°C for 30min; Antibody incubation with (Phospho-Tubulin(Ser1418)) Polyclonal Antibody, Unconjugated (SL5612R) at 1:400 overnight at 4°C, followed by operating according to SP Kit(Rabbit) (sp-0023) instructions and DAB staining.



Paraformaldehyde-fixed, paraffin embedded (Rat liver); Antigen retrieval by boiling in sodium citrate buffer (pH6.0) for 15min; Block endogenous peroxidase by 3% hydrogen peroxide for 20 minutes; Blocking buffer (normal goat serum) at 37°C for 30min; Antibody incubation with (Phospho-Tubulin(Ser1418)) Polyclonal Antibody, Unconjugated (SL5612R) at 1:400 overnight at 4°C, followed by operating according to SP Kit(Rabbit) (sp-0023) instructions and DAB staining.