



Rabbit Anti-phospho-TRIM25 (Ser100) antibody

SL5615R

Product Name:	phospho-TRIM25 (Ser100)
Chinese Name:	磷酸化雌激素反应指状蛋白抗体
Alias:	TRIM25(phospho Ser100); TRIM25(phospho S100); EFP; Estrogen responsive finger protein; RNF 147; RNF147; TRI25; TRIM 25; Tripartite motif containing 25; Tripartite motif containing protein 25; Z147; Zinc finger protein 147; Zinc finger protein 147 (estrogen responsive finger protein); ZNF 147; ZNF147.
Organism Species:	Rabbit
Clonality:	Polyclonal
React Species:	Human, Mouse, Rat, Chicken, Pig, Cow, Horse, Rabbit,
Applications:	WB=1:500-2000 ELISA=1:500-1000 IHC-P=1:400-800 IHC-F=1:400-800 IF=1:100-500 (Paraffin sections need antigen repair) not yet tested in other applications. optimal dilutions/concentrations should be determined by the end user.
Molecular weight:	71kDa
Cellular localization:	The nucleus cytoplasmic
Form:	Lyophilized or Liquid
Concentration:	1mg/ml
immunogen:	KLH conjugated Synthesised phosphopeptide derived from human TRIM25 around the phosphorylation site of Ser100:AP(p-S)PN
Lsotype:	IgG
Purification:	affinity purified by Protein A
Storage Buffer:	0.01M TBS(pH7.4) with 1% BSA, 0.03% Proclin300 and 50% Glycerol.
Storage:	Store at -20 °C for one year. Avoid repeated freeze/thaw cycles. The lyophilized antibody is stable at room temperature for at least one month and for greater than a year when kept at -20°C. When reconstituted in sterile pH 7.4 0.01M PBS or diluent of antibody the antibody is stable for at least two weeks at 2-4 °C.
PubMed:	PubMed
Product Detail:	The protein encoded by this gene is a member of the tripartite motif (TRIM) family. The

TRIM motif includes three zinc binding domains, a RING, a B box type 1 and a B box type 2, and a coiled coil region. The protein localizes to the cytoplasm. The presence of potential DNA binding and dimerization transactivation domains suggests that this protein may act as a transcription factor, similar to several other members of the TRIM family. Expression of the gene is upregulated in response to estrogen, and it is thought to mediate estrogen actions in breast cancer as a primary response gene.

Subunit:

Monomer; in the absence of TGF-beta. Homooligomer; in the presence of TGF-beta. Heterotrimer; forms a heterotrimer in the presence of TGF-beta consisting of two molecules of C-terminally phosphorylated SMAD2 or SMAD3 and one of SMAD4 to form the transcriptionally active SMAD2/SMAD3-SMAD4 complex.

Subcellular Location:

Cytoplasm. Nucleus.

Similarity:

Belongs to the dwarfin/SMAD family.
Contains 1 MH1 (MAD homology 1) domain.
Contains 1 MH2 (MAD homology 2) domain.

SWISS:

Q14258

Gene ID:

7706

Database links:

[Entrez Gene: 7706](#)Human

[Entrez Gene: 217069](#)Mouse

[Entrez Gene: 494338](#)Rat

[Omim: 600453](#)Human

[SwissProt: Q14258](#)Human

[SwissProt: Q61510](#)Mouse

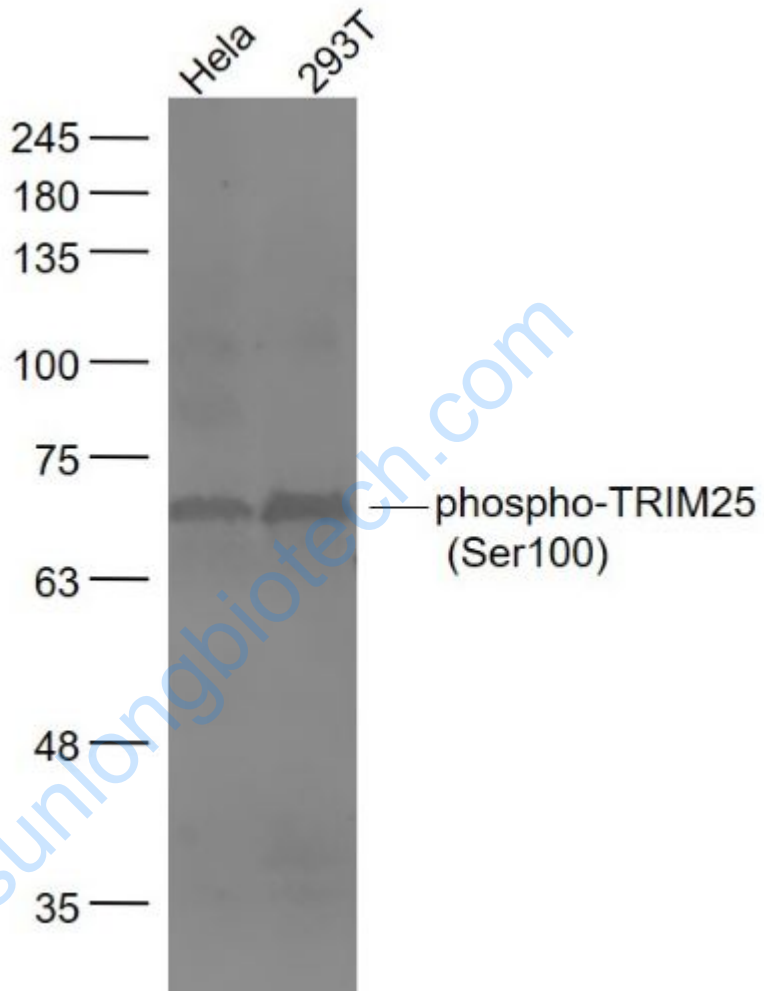
[Unigene: 528952](#)Human

[Unigene: 248445](#)Mouse

[Unigene: 34382](#)Rat

Important Note:

This product as supplied is intended for research use only, not for use in human, therapeutic or diagnostic applications.



Picture:

Sample:

HeLa(Human) Cell Lysate at 30 ug

293T(Human) Cell Lysate at 30 ug

Primary: Anti- phospho-TRIM25 (Ser100) (SL5615R) at 1/1000 dilution

Secondary: IRDye800CW Goat Anti-Rabbit IgG at 1/20000 dilution

Predicted band size: 71 kD

	Observed band size: 71 kD
--	---------------------------

www.sunlongbiotech.com