



Rabbit Anti-Phospho-RASGRF1 (Ser929) antibody

SL5683R

Product Name:	Phospho-RASGRF1 (Ser929)
Chinese Name:	磷酸化Ras特异性鸟嘌呤核苷酸释放因子1
Alias:	RASGRF1(phospho S929); RASGRF1(phospho Ser929); p-RASGRF1(S929); p-RASGRF1(Ser929); CDC25; CDC25L; GNRP; GRF1; GRF55; Guanine nucleotide exchange factor; Guanine nucleotide releasing factor 55 kD; Guanine nucleotide releasing protein; HGRF55; PP13187; Ras protein specific guanine nucleotide releasing factor 1; Ras specific guanine nucleotide releasing factor; Ras specific guanine nucleotide releasing factor CDC25 homolog; Ras specific nucleotide exchange factor CDC25.
Organism Species:	Rabbit
Clonality:	Polyclonal
React Species:	Human,Mouse,Rat,Chicken,Dog,Pig,Cow,Sheep,
Applications:	WB=1:500-2000ELISA=1:500-1000IHC-P=1:400-800IHC-F=1:400-800IF=1:100-500 (Paraffin sections need antigen repair) not yet tested in other applications. optimal dilutions/concentrations should be determined by the end user.
Molecular weight:	145kDa
Cellular localization:	cytoplasmicThe cell membrane
Form:	Lyophilized or Liquid
Concentration:	1mg/ml
immunogen:	KLH conjugated Synthesised phosphopeptide derived from human RasGRF1 around the phosphorylation site of Ser929:RM(p-S)LA
Lsotype:	IgG
Purification:	affinity purified by Protein A
Storage Buffer:	0.01M TBS(pH7.4) with 1% BSA, 0.03% Proclin300 and 50% Glycerol.
Storage:	Store at -20 °C for one year. Avoid repeated freeze/thaw cycles. The lyophilized antibody is stable at room temperature for at least one month and for greater than a year when kept at -20°C. When reconstituted in sterile pH 7.4 0.01M PBS or diluent of antibody the antibody is stable for at least two weeks at 2-4 °C.

PubMed:[PubMed](#)

The protein encoded by this gene is a guanine nucleotide exchange factor (GEF) similar to the *Saccharomyces cerevisiae* CDC25 gene product. Functional analysis has demonstrated that this protein stimulates the dissociation of GDP from RAS protein. The studies of the similar gene in mouse suggested that the Ras-GEF activity of this protein in brain can be activated by Ca²⁺ influx, muscarinic receptors, and G protein beta-gamma subunit. Mouse studies also indicated that the Ras-GEF signaling pathway mediated by this protein may be important for long-term memory. Alternatively spliced transcript variants encoding distinct isoforms have been reported. [provided by RefSeq, Mar 2009]

Function:

Promotes the exchange of Ras-bound GDP by GTP.

Subunit:

Homooligomer and heterooligomer with RASGRF2. Interacts with USP8, thereby regulating its stability.

Post-translational modifications:

Phosphorylated by PLK2, leading to ubiquitination and degradation by the proteasome. Ubiquitinated and degraded following phosphorylation by PLK2 (By similarity). Phosphorylated by SRC and LCK. Phosphorylation by LCK increases its capacity to stimulate the GDP/GTP exchange on Ras, whereas its phosphorylation by SRC seems not to have an effect on stimulation activity.

Product Detail:**Similarity:**

Contains 1 DH (DBL-homology) domain.
Contains 1 IQ domain.
Contains 1 N-terminal Ras-GEF domain.
Contains 2 PH domains.
Contains 1 Ras-GEF domain.

SWISS:

Q13972

Gene ID:

5923

Database links:

[Entrez Gene: 5923](#) Human

[Entrez Gene: 192213](#) Rat

[Omir: 606600](#) Human

[SwissProt: Q13972](#) Human

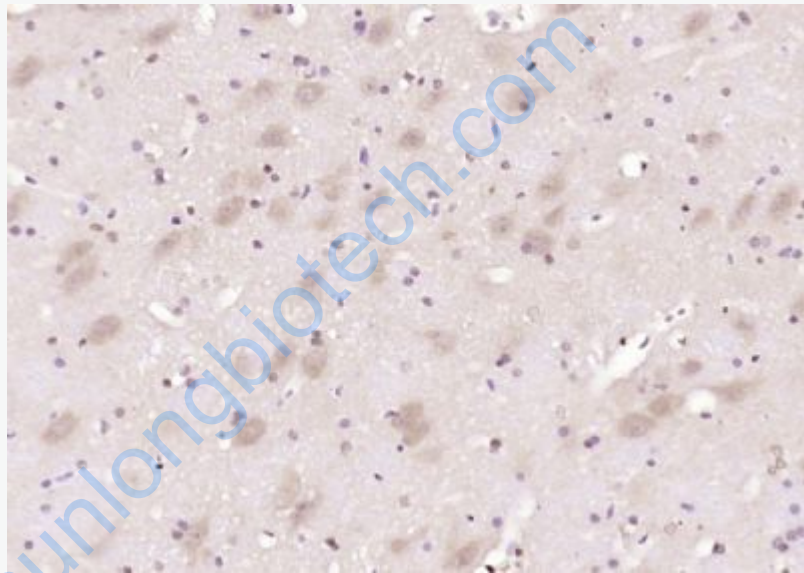
[SwissProt: P28818](#) Rat

[Unigene: 459035](#) Human

[Unigene: 135776](#) Rat

Important Note:

This product as supplied is intended for research use only, not for use in human, therapeutic or diagnostic applications.



Picture:

Paraformaldehyde-fixed, paraffin embedded (rat brain); Antigen retrieval by boiling in sodium citrate buffer (pH6.0) for 15min; Block endogenous peroxidase by 3% hydrogen peroxide for 20 minutes; Blocking buffer (normal goat serum) at 37°C for 30min; Antibody incubation with (Phospho-RASGRF1 (Ser929)) Polyclonal Antibody, Unconjugated (SL5683R) at 1:200 overnight at 4°C, followed by operating according to SP Kit(Rabbit) (sp-0023) instructions and DAB staining.