



Rabbit Anti-phospho-STAT5b (Ser731) antibody

SL5703R

Product Name:	phospho-STAT5b (Ser731)
Chinese Name:	磷酸化Signal transduction和转录激活因子5b抗体
Alias:	STAT5b (phospho S731); p-STAT5b (phospho S731); STAT5b(phospho S731); Transcription factor STAT5B; Signal transducer and activator of transcription 5B; STA5B HUMAN; STAT5; Stat5b.
Organism Species:	Rabbit
Clonality:	Polyclonal
React Species:	Human,Mouse,Rat,Chicken,Dog,Pig,Cow,Horse,Sheep,
Applications:	WB=1:500-2000ELISA=1:500-1000IHC-P=1:400-800IHC-F=1:400-800Flow-Cyt=1ug/TestIF=1:100-500 (Paraffin sections need antigen repair) not yet tested in other applications. optimal dilutions/concentrations should be determined by the end user.
Molecular weight:	90kDa
Cellular localization:	The nucleuscytoplasmic
Form:	Lyophilized or Liquid
Concentration:	1mg/ml
immunogen:	KLH conjugated Synthesised phosphopeptide derived from human STAT5b around the phosphorylation site of Ser731:AP(p-S)PA
Lsotype:	IgG
Purification:	affinity purified by Protein A
Storage Buffer:	0.01M TBS(pH7.4) with 1% BSA, 0.03% Proclin300 and 50% Glycerol.
Storage:	Store at -20 °C for one year. Avoid repeated freeze/thaw cycles. The lyophilized antibody is stable at room temperature for at least one month and for greater than a year when kept at -20°C. When reconstituted in sterile pH 7.4 0.01M PBS or diluent of antibody the antibody is stable for at least two weeks at 2-4 °C.
PubMed:	PubMed
Product Detail:	Carries out a dual function: signal transduction and activation of transcription. Binds to the GAS element and activates PRL-induced transcription.

Function:

Carries out a dual function: signal transduction and activation of transcription. Mediates cellular responses to the cytokine KITLG/SCF and other growth factors. Binds to the GAS element and activates PRL-induced transcription.

Subunit:

Forms a homodimer or a heterodimer with a related family member. Binds NR3C1 (By similarity). Interacts with NCOA1, NMI and SOCS7. Interacts (via SH2 domain) with INSR.

Subcellular Location:

Cytoplasm (By similarity). Nucleus (By similarity). Note=Translocated into the nucleus in response to phosphorylation (By similarity).

Post-translational modifications:

Tyrosine phosphorylated in response to signaling via activated KIT, resulting in translocation to the nucleus. Tyrosine phosphorylated in response to signaling via activated FLT3; wild-type FLT3 results in much weaker phosphorylation than constitutively activated mutant FLT3. Alternatively, can be phosphorylated by JAK2. Phosphorylation at Tyr-699 by PTK6 or HCK leads to an increase of its transcriptional activity.

DISEASE:

Growth hormone insensitivity with immunodeficiency (GHII) [MIM:245590]: A disease characterized by short stature, growth hormone deficiency in the presence of normal to elevated circulating concentrations of growth hormone, resistance to hexogeneous growth hormone therapy, and recurrent infections. Note=The disease is caused by mutations affecting the gene represented in this entry.

Similarity:

Belongs to the transcription factor STAT family.
Contains 1 SH2 domain.

SWISS:

P51692

Gene ID:

6777

Database links:

[Entrez Gene: 6777](#)Human

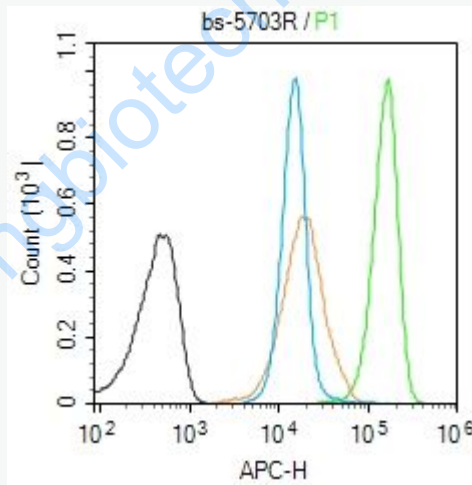
[Entrez Gene: 20851](#)Mouse

[Entrez Gene: 25126](#)Rat

[Omim: 604260](#)Human
[SwissProt: P51692](#)Human
[SwissProt: P42232](#)Mouse
[SwissProt: P52632](#)Rat
[Unigene: 595276](#)Human
[Unigene: 34064](#)Mouse
[Unigene: 54486](#)Rat

Important Note:

This product as supplied is intended for research use only, not for use in human, therapeutic or diagnostic applications.



Picture:

Blank control (Black line):Molt4 (Black).

Primary Antibody (green line): Rabbit Anti-phospho-STAT5b (Ser731) antibody (SL5703R)

Dilution: 1µg /10⁶ cells;

Isotype Control Antibody (orange line): Rabbit IgG .

Secondary Antibody (white blue line): Goat anti-rabbit IgG-AF647

Dilution: 1µg /test.

Protocol

The cells were fixed with 4% PFA (10min at room temperature)and then permeabilized with 90% ice-cold methanol for 20 min at room temperature. The cells were then incubated in 5%BSA to block non-specific protein-protein interactions for 30 min at room temperature .Cells stained with Primary Antibody for 30 min at room temperature. The secondary antibody used for 40 min at room temperature. Acquisition of 20,000 events was performed.