



## Rabbit Anti-ALDH1L1 antibody

SL5709R

<b>Product Name:</b>	ALDH1L1
<b>Chinese Name:</b>	乙醛脱氢酶1蛋白家族L1抗体
<b>Alias:</b>	10 formyltetrahydrofolate dehydrogenase; 10 FTHFDH; Aldehyde dehydrogenase 1 family member L1; FTHFD; 10-FTHFDH; FDH.
<b>Organism Species:</b>	Rabbit
<b>Clonality:</b>	Polyclonal
<b>React Species:</b>	Human,Mouse,Rat,Dog,Pig,Horse,Rabbit,
<b>Applications:</b>	WB=1:500-2000ELISA=1:500-1000IHC-P=1:400-800IHC-F=1:400-800IF=1:100-500 (Paraffin sections need antigen repair) not yet tested in other applications. optimal dilutions/concentrations should be determined by the end user.
<b>Molecular weight:</b>	100kDa
<b>Cellular localization:</b>	cytoplasmic
<b>Form:</b>	Lyophilized or Liquid
<b>Concentration:</b>	1mg/ml
<b>immunogen:</b>	KLH conjugated synthetic peptide derived from mouse ALDH1L1:451-550/902
<b>Lsotype:</b>	IgG
<b>Purification:</b>	affinity purified by Protein A
<b>Storage Buffer:</b>	0.01M TBS(pH7.4) with 1% BSA, 0.03% Proclin300 and 50% Glycerol.
<b>Storage:</b>	Store at -20 °C for one year. Avoid repeated freeze/thaw cycles. The lyophilized antibody is stable at room temperature for at least one month and for greater than a year when kept at -20°C. When reconstituted in sterile pH 7.4 0.01M PBS or diluent of antibody the antibody is stable for at least two weeks at 2-4 °C.
<b>PubMed:</b>	<a href="#">PubMed</a>
<b>Product Detail:</b>	The protein encoded by this gene catalyzes the conversion of 10-formyltetrahydrofolate, NADP, and water to tetrahydrofolate, NADPH, and carbon dioxide. The encoded protein belongs to the aldehyde dehydrogenase family and is responsible for formate oxidation in vivo. Deficiencies in this gene can result in an accumulation of formate and subsequent methanol poisoning. [provided by RefSeq, Jul 2008].

**Subcellular Location:**

Cytoplasm.

**Tissue Specificity:**

Highly expressed in liver, pancreas and kidney.

**SWISS:**

O75891

**Gene ID:**

10840

**Database links:**

[Entrez Gene: 10840](#)Human

[Entrez Gene: 107747](#)Mouse

[Entrez Gene: 100622210](#)Pig

[Entrez Gene: 64392](#)Rat

[Omim: 600249](#)Human

[SwissProt: O75891](#)Human

[SwissProt: Q8R0Y6](#)Mouse

[SwissProt: P28037](#)Rat

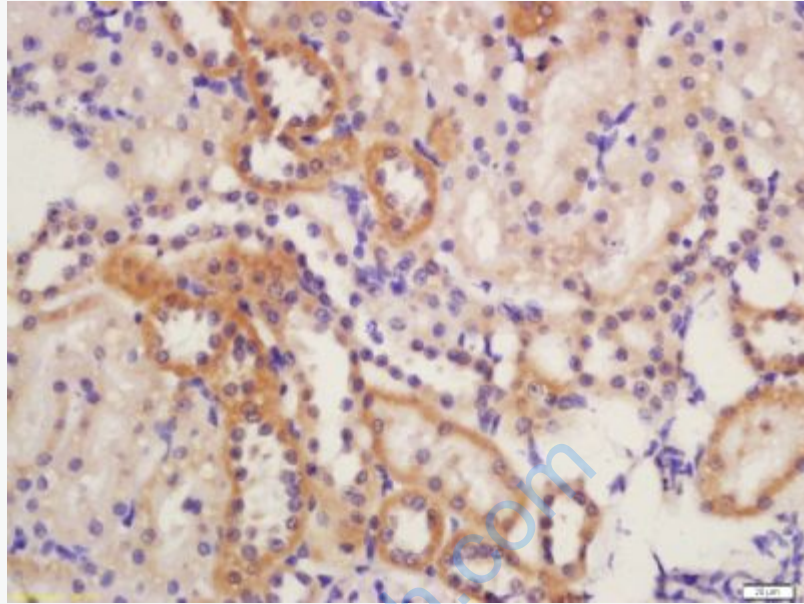
[Unigene: 434435](#)Human

[Unigene: 30035](#)Mouse

[Unigene: 2328](#)Rat

**Important Note:**

This product as supplied is intended for research use only, not for use in human, therapeutic or diagnostic applications.



**Picture:**

Tissue/cell: Rat kidney tissue; 4% Paraformaldehyde-fixed and paraffin-embedded;  
Antigen retrieval: citrate buffer ( 0.01M, pH 6.0 ), Boiling bathing for 15min; Block endogenous peroxidase by 3% Hydrogen peroxide for 30min; Blocking buffer (normal goat serum,C-0005) at 37°C for 20 min;  
Incubation: Anti-ALDH1L1 Polyclonal Antibody, Unconjugated(SL5709R) 1:200, overnight at 4°C, followed by conjugation to the secondary antibody(SP-0023) and DAB(C-0010) staining