



Rabbit Anti-CCDC106 antibody

SL5711R

Product Name:	CCDC106
Chinese Name:	卷曲螺旋结构域蛋白106抗体
Alias:	Ccdc106; Coiled-coil domain-containing protein 106; Protein predicted by clone 23882; ZNF581; CC106_HUMAN.
Organism Species:	Rabbit
Clonality:	Polyclonal
React Species:	Human,Mouse,Rat,Dog,Cow,Horse,
Applications:	WB=1:500-2000ELISA=1:500-1000IHC-P=1:400-800IHC-F=1:400-800IF=1:100-500 (Paraffin sections need antigen repair) not yet tested in other applications. optimal dilutions/concentrations should be determined by the end user.
Molecular weight:	31kDa
Cellular localization:	The nucleus
Form:	Lyophilized or Liquid
Concentration:	1mg/ml
immunogen:	KLH conjugated synthetic peptide derived from human CCDC106:201-280/280
Lsotype:	IgG
Purification:	affinity purified by Protein A
Storage Buffer:	0.01M TBS(pH7.4) with 1% BSA, 0.03% Proclin300 and 50% Glycerol.
Storage:	Store at -20 °C for one year. Avoid repeated freeze/thaw cycles. The lyophilized antibody is stable at room temperature for at least one month and for greater than a year when kept at -20°C. When reconstituted in sterile pH 7.4 0.01M PBS or diluent of antibody the antibody is stable for at least two weeks at 2-4 °C.
PubMed:	PubMed
Product Detail:	Function: Promotes the degradation of p53/TP53 protein and inhibits its transactivity. Subunit:

Interacts with p53/TP53.

Subcellular Location:

Nucleus. Note=Colocalizes with p53/TP53.

SWISS:

Q9BWC9

Gene ID:

29903

Database links:

[Entrez Gene: 29903](#)Human

[Entrez Gene: 232821](#)Mouse

[Entrez Gene: 499071](#)Rat

[Omim: 613478](#)Human

[SwissProt: Q9BWC9](#)Human

[SwissProt: Q3ULM0](#)Mouse

[Unigene: 82482](#)Human

[Unigene: 482157](#)Mouse

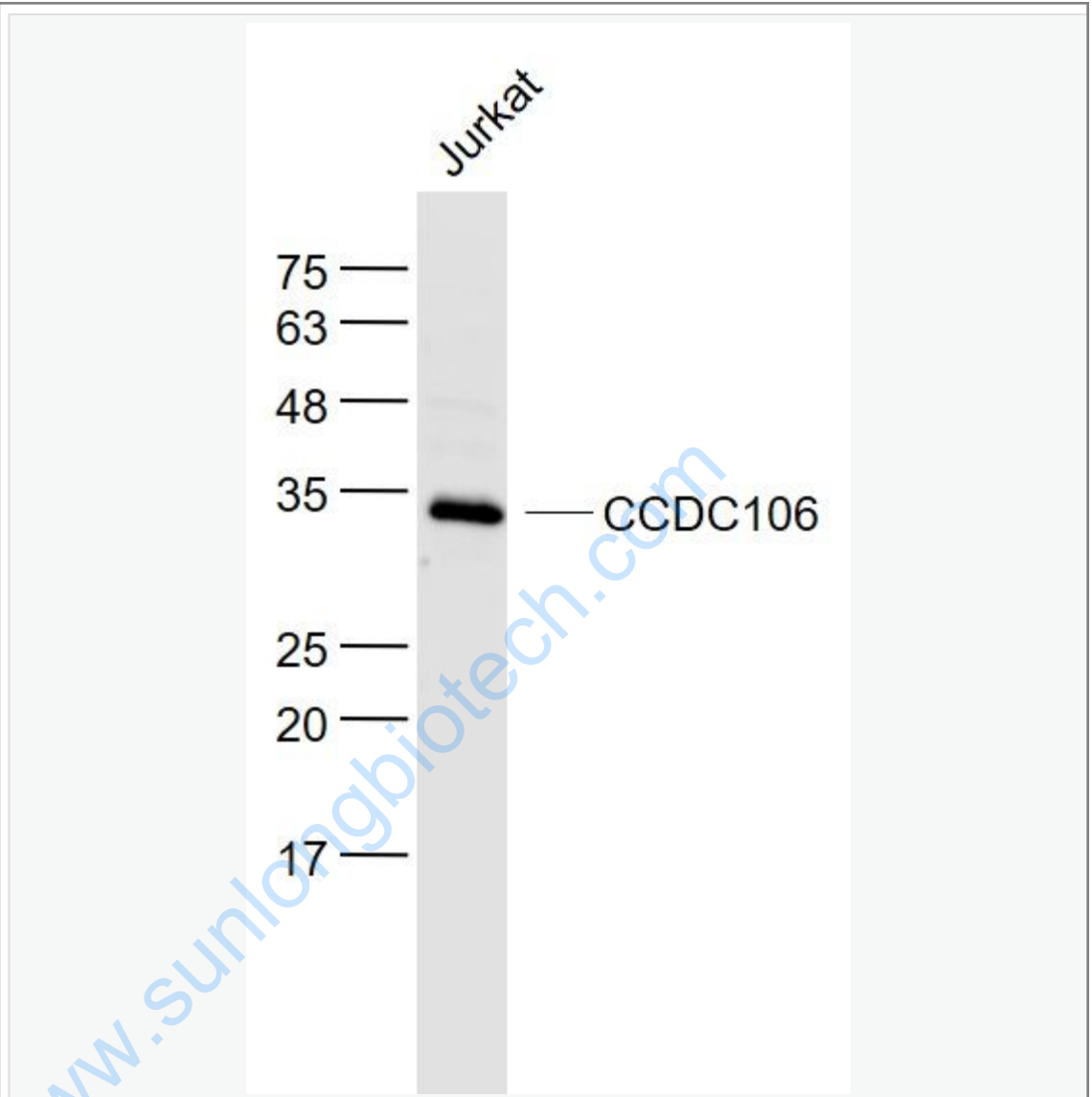
[Unigene: 488775](#)Mouse

Important Note:

This product as supplied is intended for research use only, not for use in human, therapeutic or diagnostic applications.

CCDC106通过与p53蛋白相互作用, 促进p53蛋白的降解, 导致p53功能失活。CCDC106基因很可能是一个癌基因, CCDC106的高表达可能是导致具有野生型p53 Tumor发生的原因之一。

Picture:



Sample:

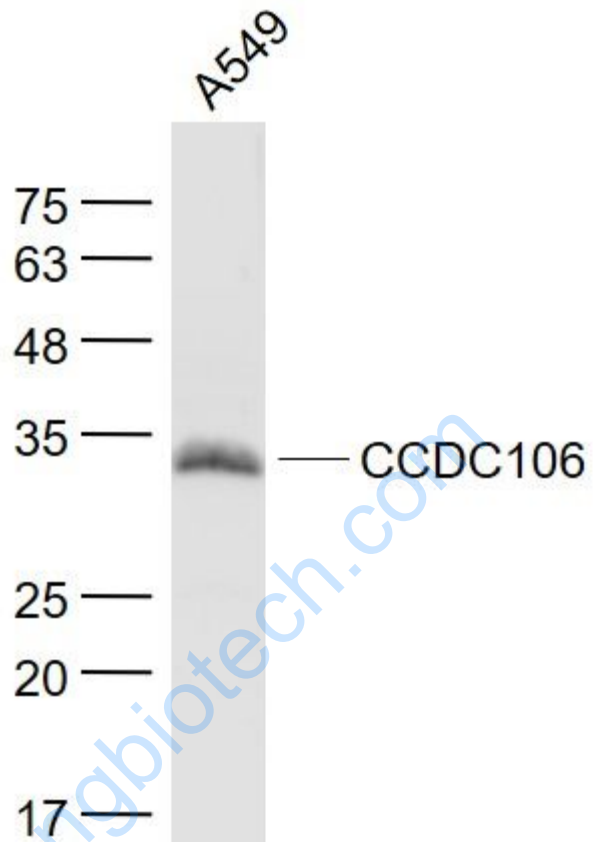
Jurkat(Human) Cell Lysate at 30 ug

Primary: Anti- CCDC106 (SL5711R) at 1/1000 dilution

Secondary: IRDye800CW Goat Anti-Rabbit IgG at 1/20000 dilution

Predicted band size: 31 kD

Observed band size: 31 kD



Sample:

A549(Human) Cell Lysate at 30 ug

Primary: Anti- CCDC106 (SL5711R) at 1/1000 dilution

Secondary: IRDye800CW Goat Anti-Rabbit IgG at 1/20000 dilution

Predicted band size: 31 kD

Observed band size: 31 kD