



## Rabbit Anti-FAP1 antibody

SL5760R

<b>Product Name:</b>	FAP1
<b>Chinese Name:</b>	Fas相关磷酸酶1抗体
<b>Alias:</b>	APO1/CD95 (Fas) associated phosphatase; Fas associated phosphatase 1; Protein tyrosine phosphatase non receptor type 13; PTP BAS; PTP BL; DKFZp686J1497; FAP 1; FAP-1; FAP1; Fas associated protein tyrosine phosphatase 1; Fas-associated protein-tyrosine phosphatase 1; HGNC:9646; hPTPE1; PNP 1; PNP1; Protein tyrosine phosphatase 1 Fas associated; protein tyrosine phosphatase 1E; Protein tyrosine phosphatase nonreceptor type 13; Protein tyrosine phosphatase PTPL1; Protein-tyrosine phosphatase 1E; Protein-tyrosine phosphatase PTPL1; PTP E1; PTP-E1; PTP1E; PTPL 1; PTPL1; PTPLE; PTPN 13; PTPN13; Tyrosine protein phosphatase non receptor type 13.
<b>Organism Species:</b>	Rabbit
<b>Clonality:</b>	Polyclonal
<b>React Species:</b>	Human,Mouse,Rat,Chicken,Dog,Pig,Cow,Horse,Rabbit,
<b>Applications:</b>	ELISA=1:500-1000IHC-P=1:400-800IHC-F=1:400-800Flow-Cyt=3ug/testIF=1:100-500 (Paraffin sections need antigen repair) not yet tested in other applications. optimal dilutions/concentrations should be determined by the end user.
<b>Molecular weight:</b>	273kDa
<b>Cellular localization:</b>	The nucleuscytoplasmic
<b>Form:</b>	Lyophilized or Liquid
<b>Concentration:</b>	1mg/ml
<b>immunogen:</b>	KLH conjugated synthetic peptide derived from human FAP1/PTPN13:801-900/2485
<b>Lsotype:</b>	IgG
<b>Purification:</b>	affinity purified by Protein A
<b>Storage Buffer:</b>	0.01M TBS(pH7.4) with 1% BSA, 0.03% Proclin300 and 50% Glycerol.
<b>Storage:</b>	Store at -20 °C for one year. Avoid repeated freeze/thaw cycles. The lyophilized antibody is stable at room temperature for at least one month and for greater than a year when kept at -20°C. When reconstituted in sterile pH 7.4 0.01M PBS or diluent of antibody the antibody is stable for at least two weeks at 2-4 °C.

**PubMed:**[PubMed](#)

PTPN13 is a member of the protein tyrosine phosphatase (PTP) family. PTPs are known to be signaling molecules that regulate a variety of cellular processes including cell growth, differentiation, mitotic cycle, and oncogenic transformation. This PTP is a large protein that possesses a PTP domain at C-terminus, and multiple noncatalytic domains, which include a domain with similarity to band 4.1 superfamily of cytoskeletal associated proteins, a region consisting of five PDZ domains, and a leucine zipper motif. This PTP was found to interact with, and dephosphorylate Fas receptor, as well as I-kappa-B-alpha through the PDZ domains, which suggested its role in Fas mediated programmed cell death. This PTP was also shown to interact with GTPase-activating protein, and thus may function as a regulator of Rho signaling pathway.

**Subunit:**

Interacts with TRIP6 and TNFRSF6 (Fas receptor) through its second PDZ domain. Interacts with the C-terminal SVP motif of NGFR through its third PDZ domain. Interacts with the LIM domain of PDLIM4 through its second and fourth PDZ domains. Binds PLEKHA1 and PLEKHA2 through its first PDZ domain. Interacts with BRD7 and ARHGAP29. Interacts (via PDZ 3 domain) with PKN2 (via C-terminus).

**Subcellular Location:**

Cytoplasm, cytoskeleton. Nucleus. Cell projection, lamellipodium.

**Tissue Specificity:**

Present in most tissues with the exception of the liver and skeletal muscle. Most abundant in lung, kidney and fetal brain.

**Similarity:**

Belongs to the protein-tyrosine phosphatase family. Non-receptor class subfamily. Contains 1 FERM domain. Contains 1 KIND domain. Contains 5 PDZ (DHR) domains. Contains 1 tyrosine-protein phosphatase domain.

**SWISS:**

Q12923

**Gene ID:**

5783

**Database links:**

[Entrez Gene: 5783](#)Human

[Omim: 600267](#)Human

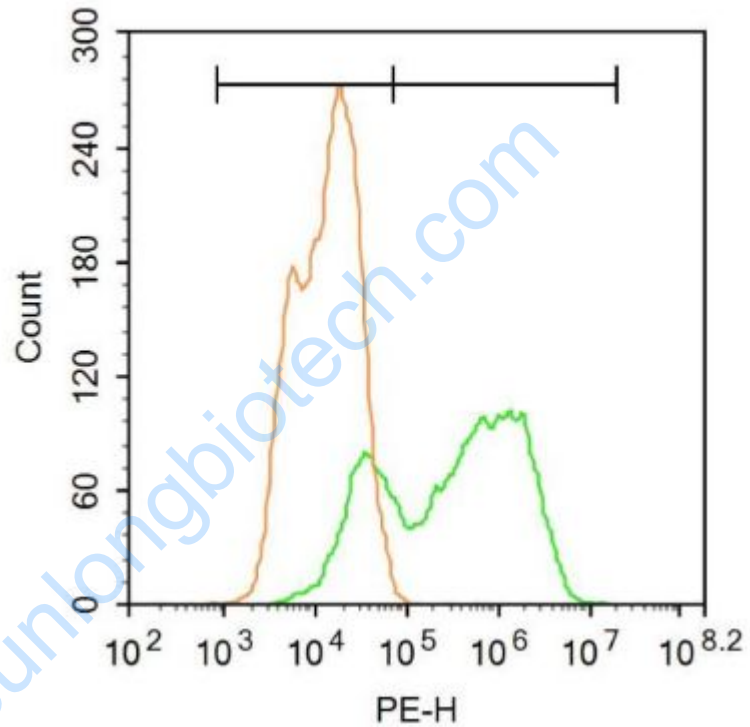
[SwissProt: Q12923](#)Human

**Product Detail:**

[Unigene: 436142](#)Human

**Important Note:**

This product as supplied is intended for research use only, not for use in human, therapeutic or diagnostic applications.



Picture:

Blank control:A549.

Primary Antibody (green line): Rabbit Anti-FAP1 antibody (SL5760R)

Dilution: 1 $\mu$ g /10<sup>6</sup> cells;

Isotype Control Antibody (orange line): Rabbit IgG .

Secondary Antibody : Goat anti-rabbit IgG-PE

Dilution: 3 $\mu$ g /test.

Protocol

The cells were fixed with 4% PFA (10min at room temperature)and then

permeabilized with 90% ice-cold methanol for 20 min at -20°C. The cells were then incubated in 5% BSA to block non-specific protein-protein interactions for 30 min at room temperature. Cells stained with Primary Antibody for 30 min at room temperature. The secondary antibody used for 40 min at room temperature. Acquisition of 20,000 events was performed.

[www.sunlongbiotech.com](http://www.sunlongbiotech.com)