



## Rabbit Anti-RELM beta antibody

SL5774R

<b>Product Name:</b>	RELM beta
<b>Chinese Name:</b>	抵抗素样分子β抗体
<b>Alias:</b>	Resistin like protein beta; C/EBP epsilon regulated myeloid specific secreted cysteine rich protein precursor 2; CCGR; Colon and small intestine specific cysteine rich protein; Colon and small intestine-specific cysteine-rich protein; Colon carcinoma related gene protein; Colon carcinoma-related gene protein; Cysteine rich secreted A12 alpha like protein 1; Cysteine rich secreted protein A12 alpha like 1; Cysteine rich secreted protein FIZZ2; Cysteine-rich secreted protein A12-alpha-like 1; Cysteine-rich secreted protein FIZZ2; FIZZ1; FIZZ2; Found in inflammatory zone 1; Found in Inflammatory Zone 2; HXCP2; RELM beta; RELMb; RELMbeta; Resistin like beta; Resistin Like Protein Beta; Resistin-like beta; RETNB HUMAN; RETNL2. RETNLB; XCP2.
<b>Organism Species:</b>	Rabbit
<b>Clonality:</b>	Polyclonal
<b>React Species:</b>	Human,
<b>Applications:</b>	WB=1:500-2000ELISA=1:500-1000IHC-P=1:400-800IHC-F=1:400-800IF=1:100-500 (Paraffin sections need antigen repair) not yet tested in other applications. optimal dilutions/concentrations should be determined by the end user.
<b>Molecular weight:</b>	9kDa
<b>Cellular localization:</b>	Secretory protein
<b>Form:</b>	Lyophilized or Liquid
<b>Concentration:</b>	1mg/ml
<b>immunogen:</b>	KLH conjugated synthetic peptide derived from human RELM beta/CCGR:24-80/111
<b>Lsotype:</b>	IgG
<b>Purification:</b>	affinity purified by Protein A
<b>Storage Buffer:</b>	0.01M TBS(pH7.4) with 1% BSA, 0.03% Proclin300 and 50% Glycerol.
<b>Storage:</b>	Store at -20 °C for one year. Avoid repeated freeze/thaw cycles. The lyophilized antibody is stable at room temperature for at least one month and for greater than a year when kept at -20°C. When reconstituted in sterile pH 7.4 0.01M PBS or diluent of antibody the antibody is stable for at least two weeks at 2-4 °C.

**PubMed:**[PubMed](#)

The cysteine-rich, adipose tissue-specific, secretory factor resistin (resistance to insulin, also known as ADSF) is a secreted hormone that potentially links obesity to diabetes. Resistin is rich in serine and cysteine residues and contains a unique cysteine repeat motif. Resistin and the resistin-like molecules share the characteristic cysteine composition and other signature features. Resistin-like a is a secreted protein that has restricted tissue distribution and is most highly expressed in adipose tissue. Another family member, Resistin-like b, is a secreted protein expressed only in the gastrointestinal tract, particularly in the colon, in both mouse and human. Resistin-like b expression is highest in proliferative epithelial cells and is markedly increased in tumors, suggesting a role in intestinal proliferation.

**Function:**

Probable hormone.

**Subunit:**

Homodimer; disulfide-linked.

**Subcellular Location:**

Secreted.

**Tissue Specificity:**

Expressed only in the gastrointestinal tract, particularly the colon.

**Similarity:**

Belongs to the resistin/FIZZ family.

**SWISS:**

Q9BQ08

**Gene ID:**

84666

**Database links:**

[Entrez Gene: 84666](#)Human

[Olim: 605645](#)Human

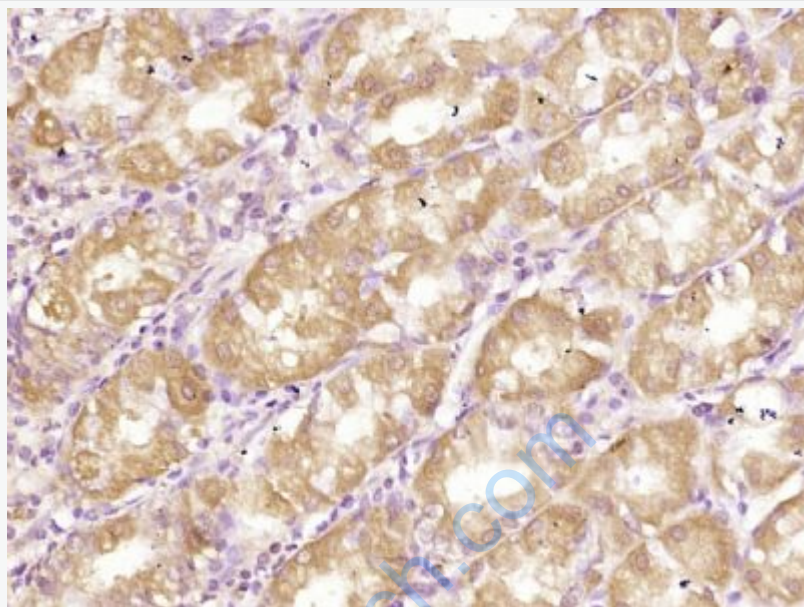
[SwissProt: Q9BQ08](#)Human

[Unigene: 307047](#)Human

**Important Note:**

This product as supplied is intended for research use only, not for use in human, therapeutic or diagnostic applications.

**Product Detail:**



**Picture:**

Paraformaldehyde-fixed, paraffin embedded (human stomach); Antigen retrieval by boiling in sodium citrate buffer (pH6.0) for 15min; Block endogenous peroxidase by 3% hydrogen peroxide for 20 minutes; Blocking buffer (normal goat serum) at 37°C for 30min; Antibody incubation with (RELM beta) Polyclonal Antibody, Unconjugated (SL5774R) at 1:400 overnight at 4°C, followed by operating according to SP Kit(Rabbit) (sp-0023) instructions and DAB staining.