



## Rabbit Anti-Activin A Receptor Type IC antibody

SL5777R

<b>Product Name:</b>	Activin A Receptor Type IC
<b>Chinese Name:</b>	激活素受体1C抗体
<b>Alias:</b>	Activin A receptor, type IC; Activin receptor like kinase 7; Activin receptor type 1C precursor; Activin receptor type IC; Activin receptor type-1C; Activin receptor-like kinase 7; ACTR IC; ACTR-IC; ACTRIC; ACV1C_HUMAN; Acvr1c; ACVRLK7; ALK 7; ALK-7; ALK7.
<b>Organism Species:</b>	Rabbit
<b>Clonality:</b>	Polyclonal
<b>React Species:</b>	Human,Mouse,Rat,Dog,Pig,Cow,Rabbit,
<b>Applications:</b>	WB=1:500-2000ELISA=1:500-1000IHC-P=1:400-800IHC-F=1:400-800Flow-Cyt=3µg/TestIF=1:100-500 (Paraffin sections need antigen repair) not yet tested in other applications. optimal dilutions/concentrations should be determined by the end user.
<b>Molecular weight:</b>	53kDa
<b>Cellular localization:</b>	The cell membrane
<b>Form:</b>	Lyophilized or Liquid
<b>Concentration:</b>	1mg/ml
<b>immunogen:</b>	KLH conjugated synthetic peptide derived from human ACTRIC/Activin A Receptor Type IC:21-120/493
<b>Lsotype:</b>	IgG
<b>Purification:</b>	affinity purified by Protein A
<b>Storage Buffer:</b>	0.01M TBS(pH7.4) with 1% BSA, 0.03% Proclin300 and 50% Glycerol.
<b>Storage:</b>	Store at -20 °C for one year. Avoid repeated freeze/thaw cycles. The lyophilized antibody is stable at room temperature for at least one month and for greater than a year when kept at -20°C. When reconstituted in sterile pH 7.4 0.01M PBS or diluent of antibody the antibody is stable for at least two weeks at 2-4 °C.
<b>PubMed:</b>	<a href="#">PubMed</a>
<b>Product Detail:</b>	Serine/threonine protein kinase which forms a receptor complex on ligand binding. The receptor complex consisting of 2 type II and 2 type I transmembrane serine/threonine kinases. Type II receptors phosphorylate and activate type I receptors which

autophosphorylate, then bind and activate SMAD transcriptional regulators, SMAD2 and SMAD3. Receptor for activin AB, activin B and NODAL. Plays a role in cell differentiation, growth arrest and apoptosis.

**Function:**

Serine/threonine protein kinase which forms a receptor complex on ligand binding. The receptor complex consisting of 2 type II and 2 type I transmembrane serine/threonine kinases. Type II receptors phosphorylate and activate type I receptors which autophosphorylate, then bind and activate SMAD transcriptional regulators, SMAD2 and SMAD3. Receptor for activin AB, activin B and NODAL. Plays a role in cell differentiation, growth arrest and apoptosis.

**Subunit:**

Binds the type 2 receptor protein ACVR2A (By similarity).

**Subcellular Location:**

Membrane; Single-pass type I membrane protein.

**Tissue Specificity:**

Present in pancreas, heart, colon, small intestine, ovary and the hippocampus, medulla oblongata and putamen of the brain. Isoform 1, isoform 2, isoform 3 and isoform 4 are all expressed in the placenta throughout pregnancy.

**Similarity:**

Belongs to the protein kinase superfamily. TKL Ser/Thr protein kinase family. TGFB receptor subfamily.

Contains 1 GS domain.

Contains 1 protein kinase domain.

**SWISS:**

Q8NER5

**Gene ID:**

130399

**Database links:**

[Entrez Gene: 130399](#)Human

[Entrez Gene: 269275](#)Mouse

[Entrez Gene: 245921](#)Rat

[Omim: 608981](#)Human

[SwissProt: Q8NER5](#)Human

[SwissProt: Q8K348](#)Mouse

[SwissProt: P70539](#)Rat

[Unigene: 562901](#)Human

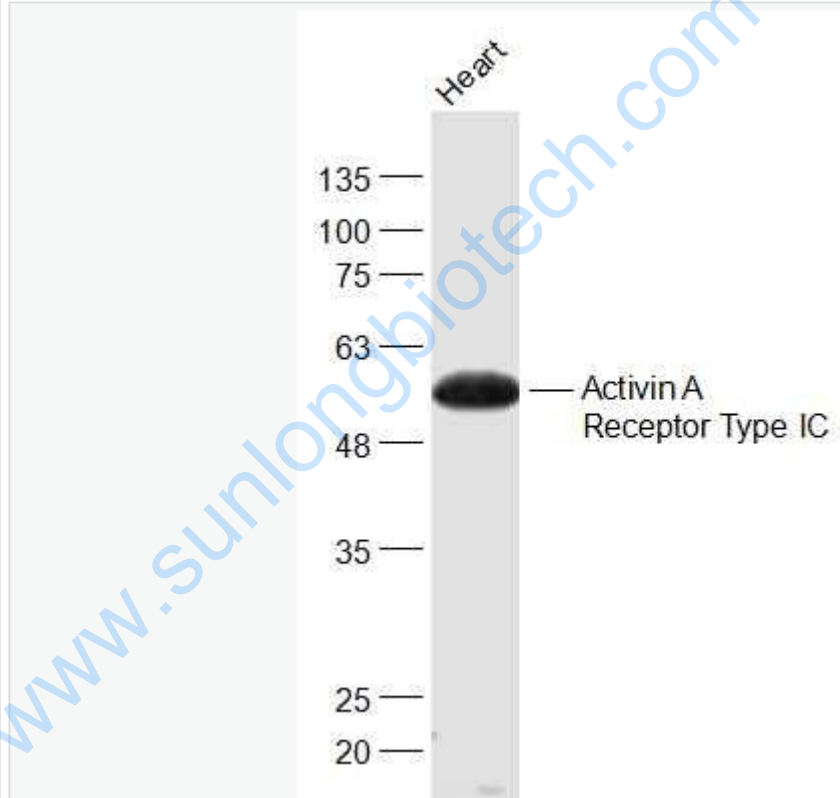
[Unigene: 77751](#)Mouse

[Unigene: 10580](#)Rat

**Important Note:**

This product as supplied is intended for research use only, not for use in human, therapeutic or diagnostic applications.

**Picture:**



Sample:

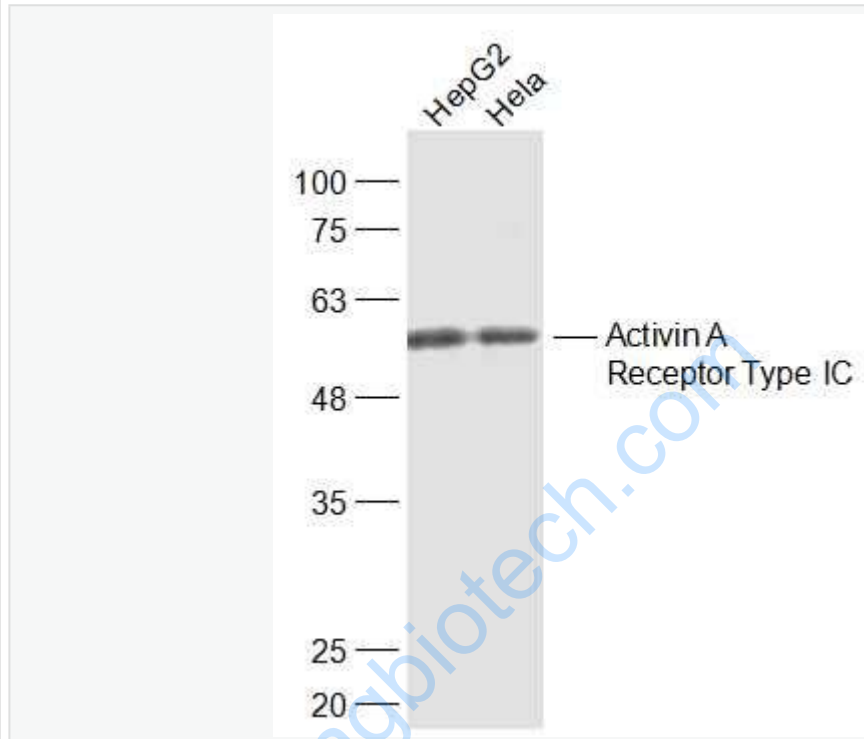
Heart (Mouse) Lysate at 40 ug

Primary: Anti-Activin A Receptor Type IC (SL5777R) at 1/1000 dilution

Secondary: IRDye800CW Goat Anti-Rabbit IgG at 1/20000 dilution

Predicted band size: 53 kD

Observed band size: 53 kD



Sample:

HepG2(Human) Cell Lysate at 30 ug

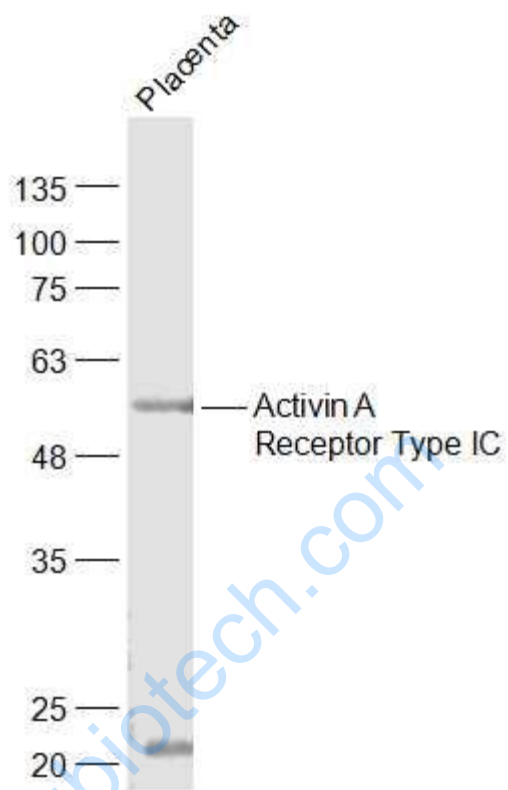
HeLa(Human) Cell Lysate at 30 ug

Primary: Anti-Activin A Receptor Type IC (SL5777R) at 1/1000 dilution

Secondary: IRDye800CW Goat Anti-Rabbit IgG at 1/20000 dilution

Predicted band size: 53 kD

Observed band size: 53 kD



Sample:

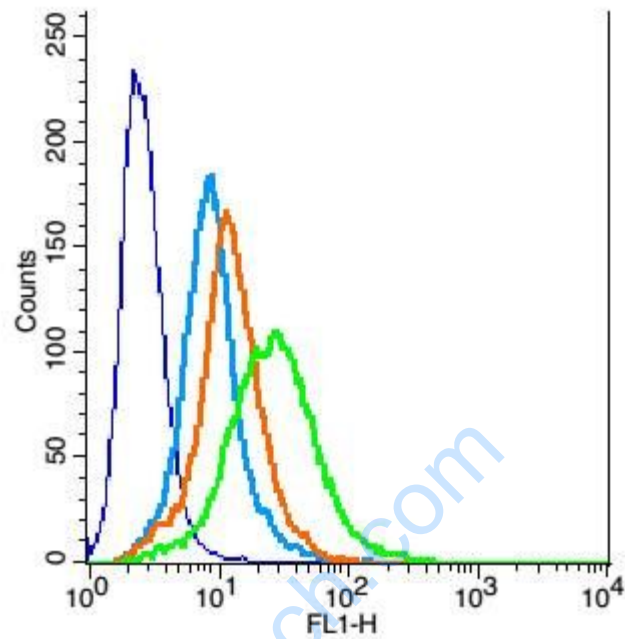
Placenta (Mouse) Lysate at 40 ug

Primary: Anti-Activin A Receptor Type IC (SL5777R) at 1/1000 dilution

Secondary: IRDye800CW Goat Anti-Rabbit IgG at 1/20000 dilution

Predicted band size: 53 kD

Observed band size: 53 kD



Blank control: H9C2 (blue)

Isotype Control Antibody: Rabbit IgG(orange) ; Secondary Antibody: Goat anti-rabbit IgG-FITC(white blue), Dilution: 1:100 in 1 X PBS containing 0.5% BSA ;

Primary Antibody Dilution: 3 $\mu$ l in 100  $\mu$ L 1X PBS containing 0.5% BSA(green).