



Rabbit Anti-TGFB4/LEFTY2 antibody

SL5778R

Product Name:	TGFB4/LEFTY2
Chinese Name:	转化生长因子β4抗体
Alias:	EBAF; Endometrial bleeding associated factor (left right determination factor A transforming growth factor beta superfamily); Endometrial bleeding associated factor; Endometrial bleeding-associated factor; Left right determination factor 2; Left right determination factor A; Left-right determination factor 2; Left-right determination factor A; LEFTA; LEFTY 2; LEFTY2; LEFTYA; LEFTY2_HUMAN; MGC46222; Protein lefty 2; Protein lefty A; Protein lefty-2; Protein lefty-A; Protein lefty2; PSEC0024; TGF beta 4; TGF-beta-4; TGFB4; Transforming growth factor beta 4; Transforming growth factor beta-4.
Organism Species:	Rabbit
Clonality:	Polyclonal
React Species:	Human,Mouse,Rat,
Applications:	WB=1:500-2000ELISA=1:500-1000IHC-P=1:400-800IHC-F=1:400-800IF=1:100-500 (Paraffin sections need antigen repair) not yet tested in other applications. optimal dilutions/concentrations should be determined by the end user.
Molecular weight:	32kDa
Cellular localization:	Secretory protein
Form:	Lyophilized or Liquid
Concentration:	1mg/ml
immunogen:	KLH conjugated synthetic peptide derived from human TGFB4:281-366/366
Lsotype:	IgG
Purification:	affinity purified by Protein A
Storage Buffer:	0.01M TBS(pH7.4) with 1% BSA, 0.03% Proclin300 and 50% Glycerol.
Storage:	Store at -20 °C for one year. Avoid repeated freeze/thaw cycles. The lyophilized antibody is stable at room temperature for at least one month and for greater than a year when kept at -20°C. When reconstituted in sterile pH 7.4 0.01M PBS or diluent of antibody the antibody is stable for at least two weeks at 2-4 °C.
PubMed:	PubMed

LEFTY2 is a member of the TGF-beta family of proteins. LEFTY2 is secreted and plays a role in left-right asymmetry determination of organ systems during development and may also play a role in endometrial bleeding. Mutations in this gene have been associated with left-right axis malformations, particularly in the heart and lungs. Some types of infertility have been associated with dysregulated expression of this gene in the endometrium. Alternative processing of this protein can yield three different products. This gene is closely linked to both a related family member and a related pseudogene.

Function:

Required for left-right (L-R) asymmetry determination of organ systems in mammals. May play a role in endometrial bleeding.

Subcellular Location:

Secreted.

Tissue Specificity:

Mesenchymal cells of the endometrial stroma.

Post-translational modifications:

The processing of the protein may also occur at the second R-X-X-R site located at AA 132-135. Processing appears to be regulated in a cell-type specific manner.

DISEASE:

Defects in LEFTY2 are the cause of left-right axis malformations (LRAM) [MIM:601877]. The defect includes left pulmonary isomerism, with cardiac anomalies characterized by complete atrioventricular canal defect and hypoplastic left ventricle, and interrupted inferior vena cava.

Similarity:

Belongs to the TGF-beta family.

SWISS:

O00292

Gene ID:

7044

Database links:

[Entrez Gene: 7044](#) Human

[Entrez Gene: 320202](#) Mouse

[Entrez Gene: 289316](#) Rat

[Omim: 601877](#) Human

Product Detail:

[SwissProt: O00292](#) Human

[SwissProt: P57785](#) Mouse

[Unigene: 520187](#) Human

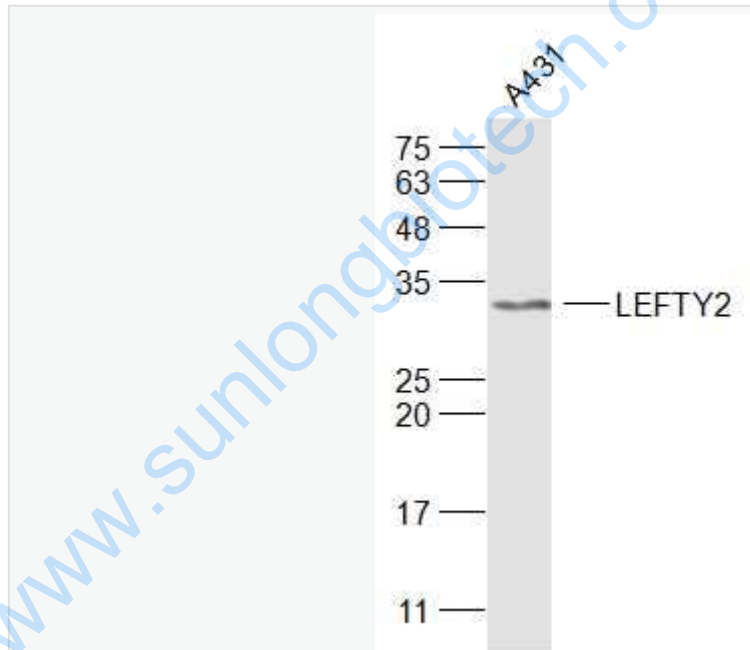
[Unigene: 87078](#) Mouse

[Unigene: 215726](#) Rat

Important Note:

This product as supplied is intended for research use only, not for use in human, therapeutic or diagnostic applications.

Picture:



Sample:

A431(Human) Cell Lysate at 30 ug

Primary: Anti-LEFTY2? (SL5778R) at 1/1000 dilution

Secondary: IRDye800CW Goat Anti-Rabbit IgG at 1/20000 dilution

Predicted band size: 32 kD

	Observed band size: 32 kD
--	---------------------------

www.sunlongbiotech.com