



## Rabbit Anti-Sulfatase 1 antibody

SL5818R

|                               |   |
|-------------------------------|---|
| <b>Product Name:</b>          | Sulfatase 1   |
| <b>Chinese Name:</b>          | 硫酸酯酶1抗体   |
| <b>Alias:</b>                 | DSulf; Sulfatase1; Sulfatase-1; Extracellular sulfatase Sulf1; Neu5; Sulf1; Sulfated; SULF1_HUMAN.  |
| <b>Organism Species:</b>      | Rabbit  |
| <b>Clonality:</b>             | Polyclonal  |
| <b>React Species:</b>         | Human,Mouse,Rat,Chicken,Dog,Pig,Cow,Horse,  |
| <b>Applications:</b>          | WB=1:500-2000ELISA=1:500-1000IHC-P=1:400-800IHC-F=1:400-800Flow-Cyt=2ug/TestIF=1:100-500 (Paraffin sections need antigen repair)<br>not yet tested in other applications.<br>optimal dilutions/concentrations should be determined by the end user.   |
| <b>Molecular weight:</b>      | 99kDa   |
| <b>Cellular localization:</b> | cytoplasmicThe cell membraneExtracellular matrix  |
| <b>Form:</b>                  | Lyophilized or Liquid   |
| <b>Concentration:</b>         | 1mg/ml  |
| <b>immunogen:</b>             | KLH conjugated synthetic peptide derived from human Sulfatase 1:601-700/871<Extracellular>  |
| <b>Lsotype:</b>               | IgG   |
| <b>Purification:</b>          | affinity purified by Protein A  |
| <b>Storage Buffer:</b>        | 0.01M TBS(pH7.4) with 1% BSA, 0.03% Proclin300 and 50% Glycerol.  |
| <b>Storage:</b>               | Store at -20 °C for one year. Avoid repeated freeze/thaw cycles. The lyophilized antibody is stable at room temperature for at least one month and for greater than a year when kept at -20°C. When reconstituted in sterile pH 7.4 0.01M PBS or diluent of antibody the antibody is stable for at least two weeks at 2-4 °C.   |
| <b>PubMed:</b>                | <a href="#">PubMed</a>  |
| <b>Product Detail:</b>        | Sulfatase 1 exhibits arylsulfatase activity and highly specific endoglucosamine-6-sulfatase activity. It can remove sulfate from the C-6 position of glucosamine within specific subregions of intact heparin. Sulfatase 1 diminishes HSPG (heparan sulfate proteoglycans) sulfation, inhibits signaling by heparin-dependent growth factors, diminishes proliferation, and facilitates apoptosis in response to exogenous stimulation. |

Sulfatase 1 is expressed at highest levels in testis, stomach, skeletal muscle, lung, kidney, pancreas, small intestine and colon. It is also detected in normal ovarian surface epithelial cells. Down-regulation of sulfatase 1 is seen in ovarian carcinoma cell lines, ovarian cancers, breast, pancreatic, renal and hepatocellular carcinoma cell lines.

**Function:**

Exhibits arylsulfatase activity and highly specific endoglucosamine-6-sulfatase activity. It can remove sulfate from the C-6 position of glucosamine within specific subregions of intact heparin. Diminishes HSPG (heparan sulfate proteoglycans) sulfation, inhibits signaling by heparin-dependent growth factors, diminishes proliferation, and facilitates apoptosis in response to exogenous stimulation.

**Subcellular Location:**

Endoplasmic reticulum. Golgi apparatus, Golgi stack. Cell surface. Note=Also localized on the cell surface.

**Tissue Specificity:**

Expressed at highest levels in testis, stomach, skeletal muscle, lung, kidney, pancreas, small intestine and colon. It is also detected in normal ovarian surface epithelial cells. Down-regulation seen in ovarian carcinoma cell lines, ovarian cancers, breast, pancreatic, renal and hepatocellular carcinoma cell lines.

**Post-translational modifications:**

The conversion to 3-oxoalanine (also known as C-formylglycine, FGly), of a serine or cysteine residue in prokaryotes and of a cysteine residue in eukaryotes, is critical for catalytic activity (By similarity).

**Similarity:**

Belongs to the sulfatase family.

**SWISS:**

Q8IWU6

**Gene ID:**

23213

**Database links:**

[Entrez Gene: 23213](#)Human

[Entrez Gene: 240725](#)Mouse

[Entrez Gene: 171396](#)Rat

[Omim: 610012](#)Human

[SwissProt: Q8IWU6](#)Human

[SwissProt: Q8K007](#)Mouse

[SwissProt: Q8VI60](#)Rat

[Unigene: 409602](#)Human

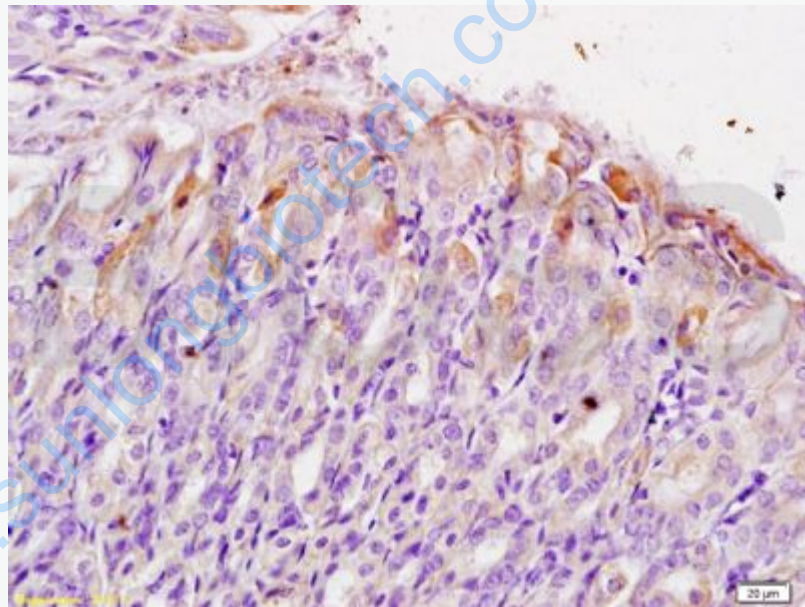
[Unigene: 45563](#)Mouse

[Unigene: 161961](#)Rat

**Important Note:**

This product as supplied is intended for research use only, not for use in human, therapeutic or diagnostic applications.

**Picture:**



Tissue/cell: mouse stomach tissue; 4% Paraformaldehyde-fixed and paraffin-embedded;

Antigen retrieval: citrate buffer ( 0.01M, pH 6.0 ), Boiling bathing for 15min; Block endogenous peroxidase by 3% Hydrogen peroxide for 30min; Blocking buffer (normal goat serum,C-0005) at 37°C for 20 min;

Incubation: Anti-Sulfatase 1 Polyclonal Antibody, Unconjugated(SL5818R) 1:200, overnight at 4°C, followed by conjugation to the secondary antibody(SP-0023) and

|  |                      |
|--|----------------------|
|  | DAB(C-0010) staining |
|--|----------------------|

[www.sunlongbiotech.com](http://www.sunlongbiotech.com)