



Rabbit Anti-K Cadherin antibody

SL5823R

Product Name:	K Cadherin
Chinese Name:	钙粘蛋白6抗体
Alias:	Cadherin 6; Cadherin6; Cadherin-6; Cadherin 6 type 2; Cadherin fetal kidney; Cadherin6; CDH 6; CDH6; KCAD; Kidney cadherin; CADH6_HUMAN.
Organism Species:	Rabbit
Clonality:	Polyclonal
React Species:	Human,Mouse,Rat,Cow,Horse,
Applications:	WB=1:500-2000ELISA=1:500-1000Flow-Cyt=1µg/Test not yet tested in other applications. optimal dilutions/concentrations should be determined by the end user.
Molecular weight:	82kDa
Cellular localization:	The cell membrane
Form:	Lyophilized or Liquid
Concentration:	1mg/ml
immunogen:	KLH conjugated synthetic peptide derived from human K Cadherin:281-380/790<Extracellular>
Lsotype:	IgG
Purification:	affinity purified by Protein A
Storage Buffer:	0.01M TBS(pH7.4) with 1% BSA, 0.03% Proclin300 and 50% Glycerol.
Storage:	Store at -20 °C for one year. Avoid repeated freeze/thaw cycles. The lyophilized antibody is stable at room temperature for at least one month and for greater than a year when kept at -20°C. When reconstituted in sterile pH 7.4 0.01M PBS or diluent of antibody the antibody is stable for at least two weeks at 2-4 °C.
PubMed:	PubMed
Product Detail:	K Cadherin (Cadherin 6) is a type II classical cadherin from the cadherin superfamily. It is a calcium dependent cell-cell adhesion membrane glycoprotein comprised of five extracellular cadherin repeats, a transmembrane region and a highly conserved cytoplasmic tail. Cadherins preferentially interact with themselves in a homophilic manner in connecting cells. K Cadherin is highly expressed in brain, cerebellum, and kidney. Lung, pancreas, and gastric mucosa show a weak expression. It is also expressed

in certain liver and kidney carcinomas.

Function:

Cadherins are calcium dependent cell adhesion proteins. They preferentially interact with themselves in a homophilic manner in connecting cells; cadherins may thus contribute to the sorting of heterogeneous cell types.

Subcellular Location:

Cell membrane; Single-pass type I membrane protein.

Tissue Specificity:

Highly expressed in brain, cerebellum, and kidney. Lung, pancreas, and gastric mucosa show a weak expression. Also expressed in certain liver and kidney carcinomas.

Similarity:

Contains 5 cadherin domains.

SWISS:

P55285

Gene ID:

1004

Database links:

[Entrez Gene: 1004](#)Human

[Entrez Gene: 12563](#)Mouse

[Entrez Gene: 25409](#)Rat

[Omim: 603007](#)Human

[SwissProt: P55285](#)Human

[SwissProt: P97326](#)Mouse

[SwissProt: P55280](#)Rat

[Unigene: 124776](#)Human

[Unigene: 171054](#)Human

[Unigene: 57048](#)Mouse

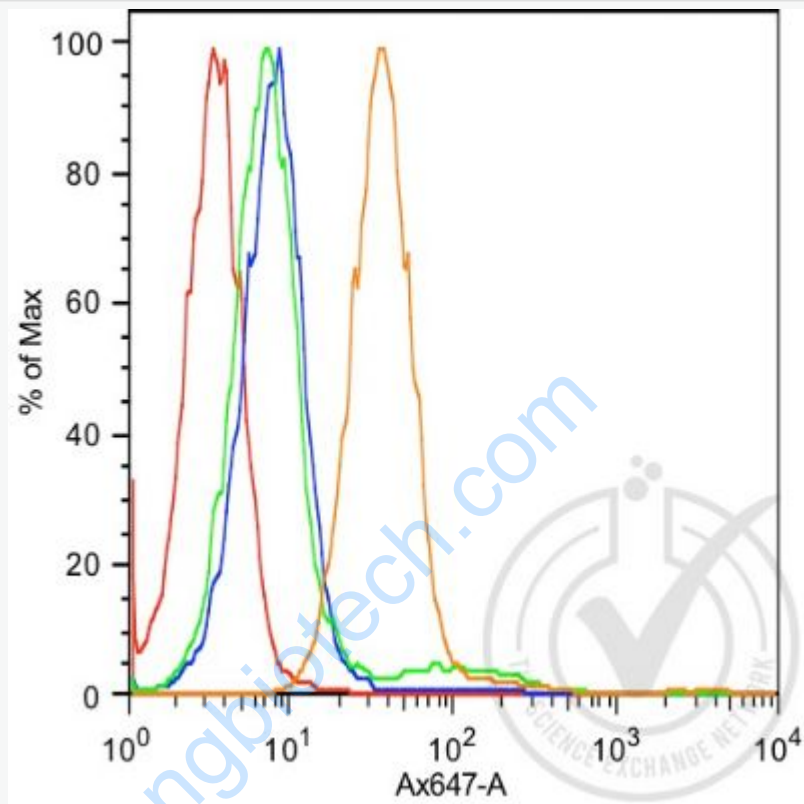
[Unigene: 10390](#)Rat

Important Note:

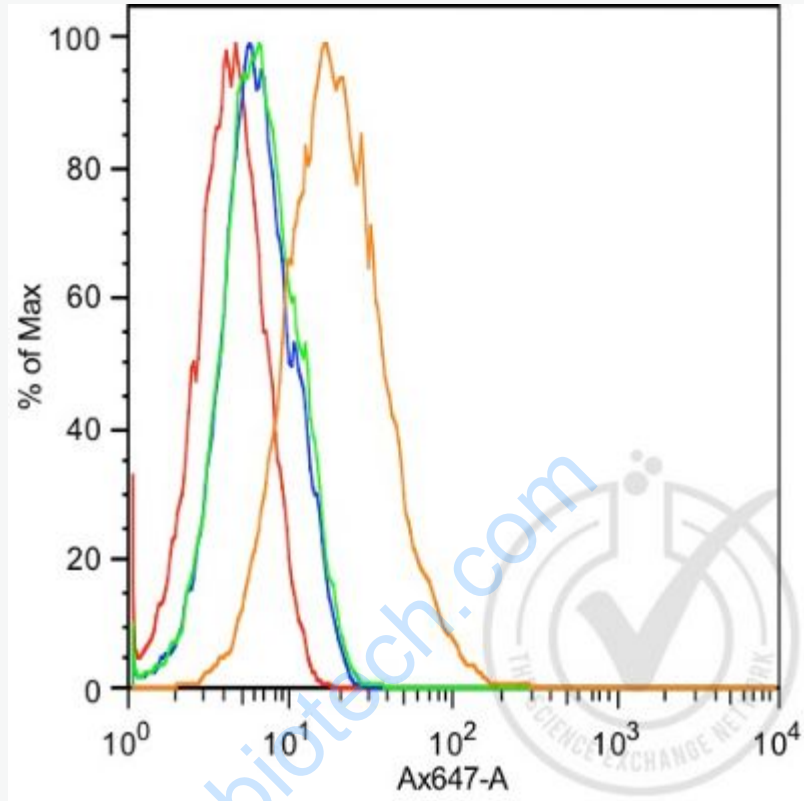
This product as supplied is intended for research use only, not for use in human,

therapeutic or diagnostic applications.

Picture:



Histogram of MCF-7 cells stained with anti-K-cadherin (orange), isotype control antibody (green), secondary antibody only (blue) and unstained (red).



Histogram of 786-O cells stained with anti-K-cadherin (orange), isotype control antibody (green), secondary antibody only (blue) and unstained (red).