



Rabbit Anti-RAB21 antibody

SL5830R

Product Name:	RAB21
Chinese Name:	G蛋白家族RAB21蛋白抗体
Alias:	RAB 21; RAB21; RAB-21; RAB21, member RAS oncogene family; Ras-related protein Rab-21; RAB21 HUMAN.
Organism Species:	Rabbit
Clonality:	Polyclonal
React Species:	Human,Mouse,Rat,Chicken,Cow,Horse,Rabbit,Sheep,
Applications:	WB=1:500-2000ELISA=1:500-1000IHC-P=1:400-800IHC-F=1:400-800IF=1:100-500 (Paraffin sections need antigen repair) not yet tested in other applications. optimal dilutions/concentrations should be determined by the end user.
Molecular weight:	24kDa
Cellular localization:	cytoplasmic
Form:	Lyophilized or Liquid
Concentration:	1mg/ml
immunogen:	KLH conjugated synthetic peptide derived from human RAB21.:51-150/225
Lsotype:	IgG
Purification:	affinity purified by Protein A
Storage Buffer:	0.01M TBS(pH7.4) with 1% BSA, 0.03% Proclin300 and 50% Glycerol.
Storage:	Store at -20 °C for one year. Avoid repeated freeze/thaw cycles. The lyophilized antibody is stable at room temperature for at least one month and for greater than a year when kept at -20°C. When reconstituted in sterile pH 7.4 0.01M PBS or diluent of antibody the antibody is stable for at least two weeks at 2-4 °C.
PubMed:	PubMed
Product Detail:	RAB21 belongs to the family of small GTP-binding proteins that regulate intracellular vesicles targeting. RAB21 regulates integrin internalization and recycling and it is essential for normal cell division and defects in this trafficking may contribute to multinucleation and genomic instability. Function:

Regulates integrin internalization and recycling, but does not influence the traffic of endosomally translocated receptors in general. As a result, may regulate cell adhesion and migration (By similarity). During the mitosis of adherent cells, controls the endosomal trafficking of integrins which is required for the successful completion of cytokinesis.

Subunit:

Interacts with the cytoplasmic tail of integrins ITGA1, ITGA2, ITGA5, ITGA6, ITGA11 and ITGB1 (By similarity). Interacts with RABGEF1 (via VPS9 domain).

Subcellular Location:

Endoplasmic reticulum membrane; Lipid-anchor (By similarity). Golgi apparatus membrane. Early endosome membrane. Cytoplasmic vesicle membrane. Cleavage furrow. Note=In nonpolarized epithelial Caco-2 cells, found in the endoplasmic reticulum; in polarized cells, observed in vesicles in the apical cytoplasm. During mitosis, in mid-telophase, localized in the ingressing cleavage furrow. In late telophase, detected at the opposite poles of the daughter cells, in vesicles at the base of lamellipodia formed by the separating daughter cells.

Tissue Specificity:

Widely expressed. In jejunal tissue, predominantly expressed in the apical region of the epithelial cell layer of the villi, weak expression, if any, in the crypt epithelium. Capillary endothelium and some cell types in the lamina propria also show expression.

Similarity:

Belongs to the small GTPase superfamily. Rab family.

SWISS:

Q9UL25

Gene ID:

23011

Database links:

[Entrez Gene: 23011](#)Human

[Entrez Gene: 216344](#)Mouse

[Entrez Gene: 299799](#)Rat

[Omim: 612398](#)Human

[SwissProt: Q17R06](#)Cow

[SwissProt: P55745](#)Dog

[SwissProt: Q9UL25](#)Human

[SwissProt: P35282](#)Mouse

[SwissProt: Q6AXT5](#)Rat

[Unigene: 524590](#)Human

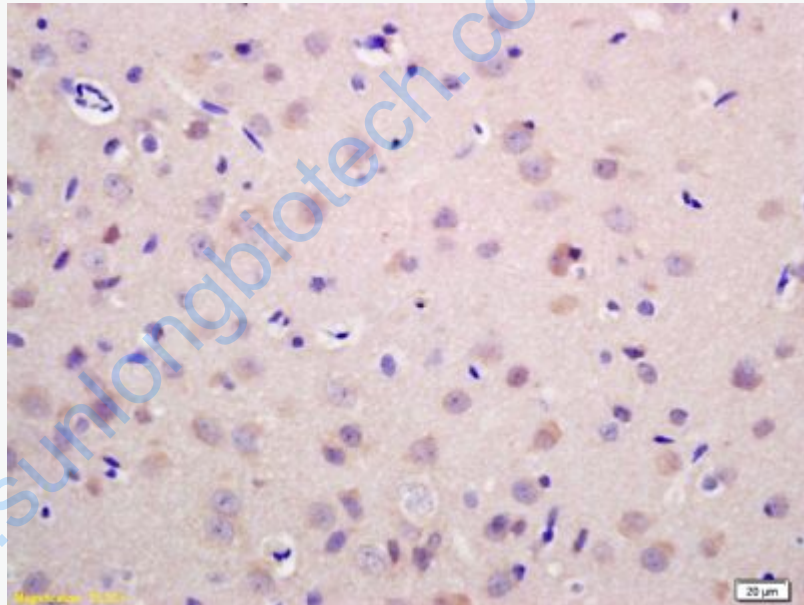
[Unigene: 21936](#)Mouse

[Unigene: 162952](#)Rat

Important Note:

This product as supplied is intended for research use only, not for use in human, therapeutic or diagnostic applications.

Picture:



Tissue/cell: rat brain tissue; 4% Paraformaldehyde-fixed and paraffin-embedded;
Antigen retrieval: citrate buffer (0.01M, pH 6.0), Boiling bathing for 15min; Block
endogenous peroxidase by 3% Hydrogen peroxide for 30min; Blocking buffer
(normal goat serum,C-0005) at 37°C for 20 min;
Incubation: Anti-RAB21 Polyclonal Antibody, Unconjugated(SL5830R) 1:200,
overnight at 4°C, followed by conjugation to the secondary antibody(SP-0023) and

	DAB(C-0010) staining
--	----------------------

www.sunlongbiotech.com