



Rabbit Anti-Galectin 8 antibody

SL5839R

Product Name:	Galectin 8
Chinese Name:	半乳糖凝集素8抗体
Alias:	Gal 8; Gal-8; Gal8; Galectin-8; LEG8_HUMAN; LGAL S8; LGALS8; PCTA 1; PCTA-1; PCTA1; Po66 carbohydrate binding protein; Po66 carbohydrate-binding protein; Po66 CBP; Po66-CBP; Prostate carcinoma tumor antigen 1.
Organism Species:	Rabbit
Clonality:	Polyclonal
React Species:	Human,Mouse,Rat,
Applications:	WB=1:500-2000ELISA=1:500-1000IHC-P=1:400-800IHC-F=1:400-800IF=1:100-500 (Paraffin sections need antigen repair) not yet tested in other applications. optimal dilutions/concentrations should be determined by the end user.
Molecular weight:	35kDa
Cellular localization:	cytoplasmic
Form:	Lyophilized or Liquid
Concentration:	1mg/ml
immunogen:	KLH conjugated synthetic peptide derived from human Galectin 8:281-359/359
Lsotype:	IgG
Purification:	affinity purified by Protein A
Storage Buffer:	0.01M TBS(pH7.4) with 1% BSA, 0.03% Proclin300 and 50% Glycerol.
Storage:	Store at -20 °C for one year. Avoid repeated freeze/thaw cycles. The lyophilized antibody is stable at room temperature for at least one month and for greater than a year when kept at -20°C. When reconstituted in sterile pH 7.4 0.01M PBS or diluent of antibody the antibody is stable for at least two weeks at 2-4 °C.
PubMed:	PubMed
Product Detail:	This gene encodes a member of the galectin family. Galectins are beta-galactoside-binding animal lectins with conserved carbohydrate recognition domains. The galectins have been implicated in many essential functions including development, differentiation, cell-cell adhesion, cell-matrix interaction, growth regulation, apoptosis, and RNA splicing. This gene is widely expressed in tumoral tissues and seems to be

involved in integrin-like cell interactions. Alternatively spliced transcript variants encoding different isoforms have been identified. [provided by RefSeq, Jul 2008]

Subcellular Location:

Cytoplasm.

Tissue Specificity:

Ubiquitous. Selective expression by prostate carcinomas versus normal prostate and benign prostatic hypertrophy.

Similarity:

Contains 2 galectin domains.

SWISS:

O00214

Gene ID:

3964

Database links:

[Entrez Gene: 3964](#) Human

[Entrez Gene: 56048](#) Mouse

[Entrez Gene: 116641](#) Rat

[Omim: 606099](#) Human

[SwissProt: O00214](#) Human

[SwissProt: Q9JL15](#) Mouse

[SwissProt: Q62665](#) Rat

[Unigene: 4082](#) Human

[Unigene: 708114](#) Human

[Unigene: 448495](#) Mouse

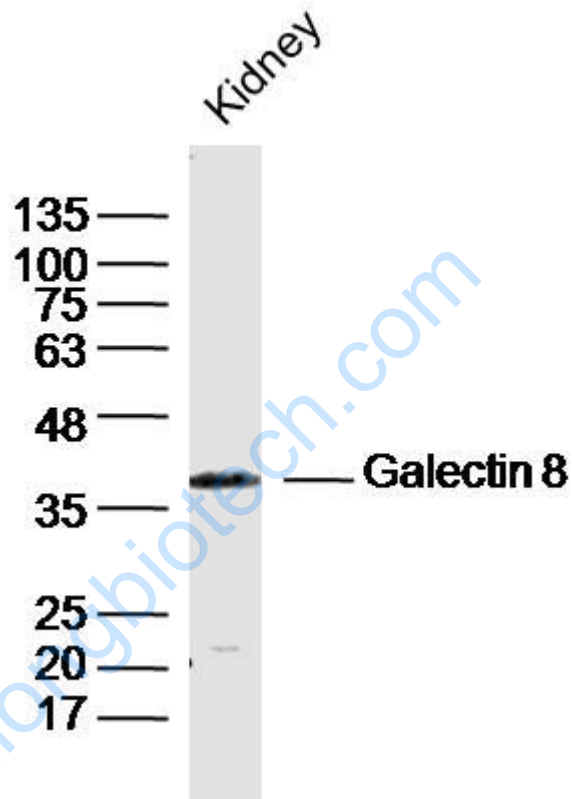
[Unigene: 474138](#) Mouse

[Unigene: 10069](#) Rat

Important Note:

This product as supplied is intended for research use only, not for use in human, therapeutic or diagnostic applications.

Picture:



Sample:

Kidney (Mouse) Lysate at 40 ug

Primary: Anti- Galectin 8 (SL5839R) at 1/300 dilution

Secondary: IRDye800CW Goat Anti-Rabbit IgG at 1/20000 dilution

Predicted band size: 35kD

Observed band size: 36kD