




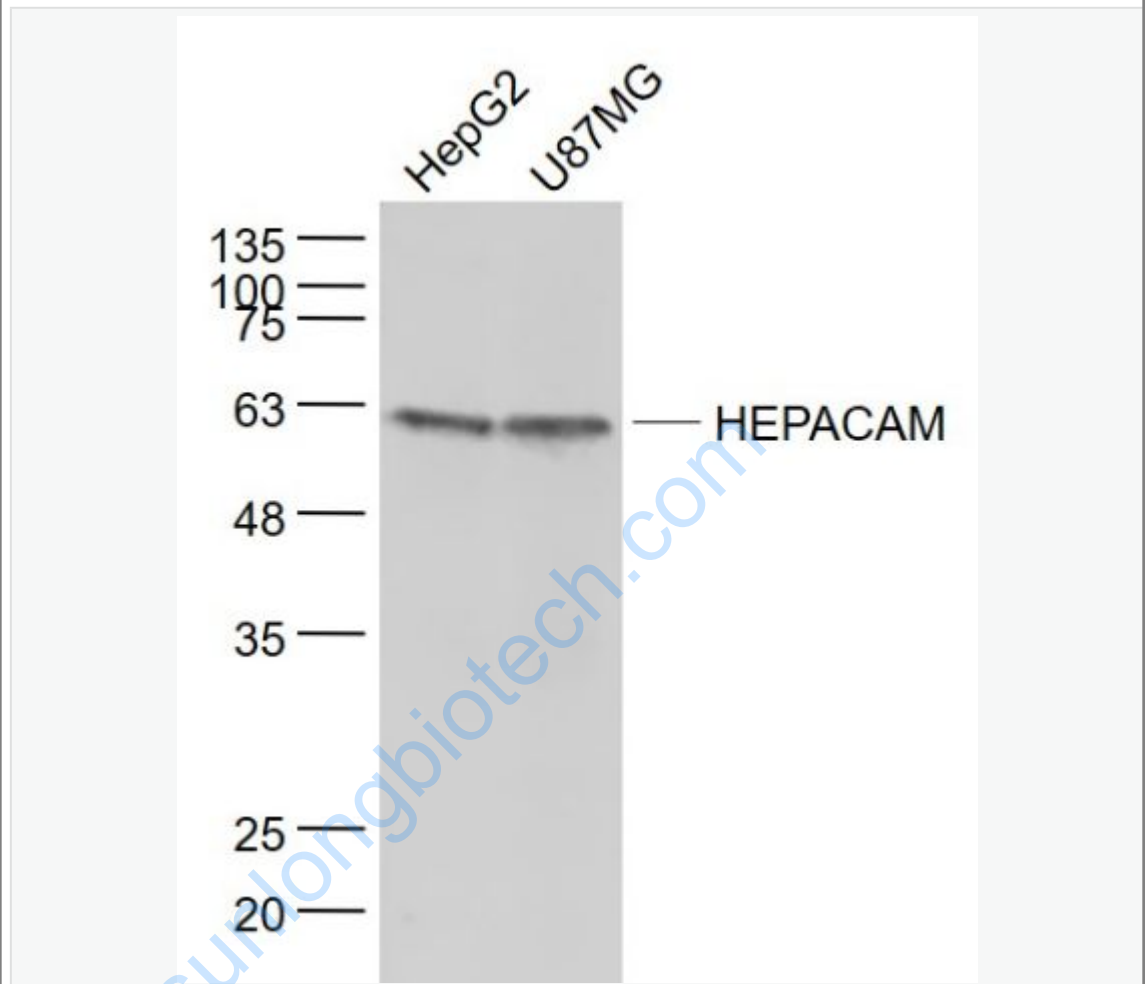
Rabbit Anti-HEPACAM antibody

SL5840R

Product Name:	HEPACAM
Chinese Name:	肝Cell adhesion molecule抗体
Alias:	GlialCAM; HECAM_HUMAN; HEPACAM; Hepatocyte cell adhesion molecule; Protein hepaCAM.
文献引用  :	Specific References(1) SL5840R has been referenced in 1 publications. [IF=4.88] Maes, Micha?l, et al. "Involvement of connexin43 in acetaminophen-induced liver injury." Biochimica et Biophysica Acta (BBA)-Molecular Basis of Disease (2016). Mouse. PubMed:26912412
Organism Species:	Rabbit
Clonality:	Polyclonal
React Species:	Human,Mouse,Rat,Dog,Pig,Cow,Horse,Rabbit,
Applications:	WB=1:500-2000ELISA=1:500-1000IHC-P=1:400-800IHC-F=1:400-800IF=1:100-500 (Paraffin sections need antigen repair) not yet tested in other applications. optimal dilutions/concentrations should be determined by the end user.
Molecular weight:	42kDa
Cellular localization:	cytoplasmicThe cell membraneExtracellular matrix
Form:	Lyophilized or Liquid
Concentration:	1mg/ml
immunogen:	KLH conjugated synthetic peptide derived from human HEPACAM:101-200/416<Extracellular>
Lsotype:	IgG
Purification:	affinity purified by Protein A
Storage Buffer:	0.01M TBS(pH7.4) with 1% BSA, 0.03% Proclin300 and 50% Glycerol.
Storage:	Store at -20 °C for one year. Avoid repeated freeze/thaw cycles. The lyophilized antibody is stable at room temperature for at least one month and for greater than a year

	when kept at -20°C. When reconstituted in sterile pH 7.4 0.01M PBS or diluent of antibody the antibody is stable for at least two weeks at 2-4 °C.
PubMed:	PubMed
Product Detail:	<p>Involved in regulating cell motility and cell-matrix interactions. May inhibit cell growth through suppression of cell proliferation.</p> <p>Subunit: Homodimer. Dimer formation occurs predominantly through cis interactions on the cell surface.</p> <p>Subcellular Location: Cytoplasm. Membrane; Single-pass type I membrane protein; Cytoplasmic side. Note=In MCF7 breast carcinoma and hepatic Hep3B and HepG2 cell lines, localization of HEPACAM is cell density-dependent. In well spread cells, localized to punctate structures in the perinuclear membrane, cytoplasm, and at cell surface of protusions. In confluent cells, localized predominantly to the cytoplasmic membrane, particularly in areas of cell-cell contacts. Colocalizes with CDH1.</p> <p>Similarity: Contains 1 Ig-like C2-type (immunoglobulin-like) domain. Contains 1 Ig-like V-type (immunoglobulin-like) domain.</p> <p>SWISS: Q14CZ8</p> <p>Gene ID: 220296</p> <p>Database links: Entrez Gene: 220296Human Entrez Gene: 72927Mouse Oimim: 611642Human SwissProt: Q14CZ8Human SwissProt: Q640R3Mouse Unigene: 159863Human Unigene: 266133Mouse</p> <p>Important Note: This product as supplied is intended for research use only, not for use in human, therapeutic or diagnostic applications.</p>

Picture:



Sample:

HepG2(Human) Cell Lysate at 30 ug

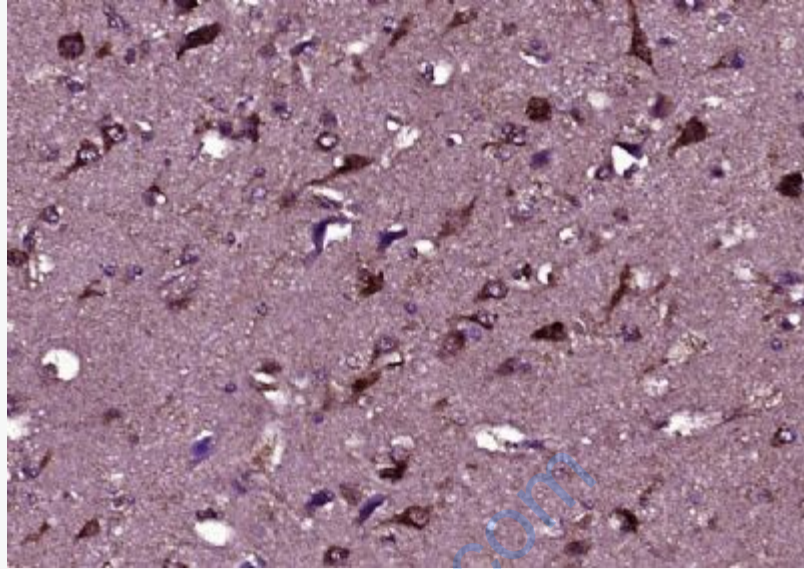
U87MG(Human) Cell Lysate at 30 ug

Primary: Anti- HEPACAM (SL5840R) at 1/1000 dilution

Secondary: IRDye800CW Goat Anti-Rabbit IgG at 1/20000 dilution

Predicted band size: 42 kD

Observed band size: 62 kD



Paraformaldehyde-fixed, paraffin embedded (Human brain glioma); Antigen retrieval by boiling in sodium citrate buffer (pH6.0) for 15min; Block endogenous peroxidase by 3% hydrogen peroxide for 20 minutes; Blocking buffer (normal goat serum) at 37°C for 30min; Antibody incubation with (HEPACAM) Polyclonal Antibody, Unconjugated (SL5840R) at 1:400 overnight at 4°C, followed by operating according to SP Kit(Rabbit) (sp-0023) instructions and DAB staining.