



Rabbit Anti-ADAM11 antibody

SL5846R

Product Name:	ADAM11
Chinese Name:	去整合素样金属蛋白酶11抗体
Alias:	A disintegrin and metalloproteinase domain 11; ADA11_HUMAN; MDC; Metalloproteinase like, disintegrin like, and cysteine rich protein.
Organism Species:	Rabbit
Clonality:	Polyclonal
React Species:	Human,Mouse,Rat,Cow,Sheep,
Applications:	WB=1:500-2000ELISA=1:500-1000IHC-P=1:400-800IHC-F=1:400-800IF=1:100-500 (Paraffin sections need antigen repair) not yet tested in other applications. optimal dilutions/concentrations should be determined by the end user.
Molecular weight:	60kDa
Cellular localization:	The cell membrane
Form:	Lyophilized or Liquid
Concentration:	1mg/ml
immunogen:	KLH conjugated synthetic peptide derived from human ADAM11:351-450/769
Lsotype:	IgG
Purification:	affinity purified by Protein A
Storage Buffer:	0.01M TBS(pH7.4) with 1% BSA, 0.03% Proclin300 and 50% Glycerol.
Storage:	Store at -20 °C for one year. Avoid repeated freeze/thaw cycles. The lyophilized antibody is stable at room temperature for at least one month and for greater than a year when kept at -20°C. When reconstituted in sterile pH 7.4 0.01M PBS or diluent of antibody the antibody is stable for at least two weeks at 2-4 °C.
PubMed:	PubMed
Product Detail:	This gene encodes a member of the ADAM (a disintegrin and metalloprotease) protein family. Members of this family are membrane-anchored proteins structurally related to snake venom disintegrins, and have been implicated in a variety of biological processes involving cell-cell and cell-matrix interactions, including fertilization, muscle development, and neurogenesis. This gene represents a candidate tumor suppressor gene for human breast cancer based on its location within a minimal region of chromosome

17q21 previously defined by tumor deletion mapping. [provided by RefSeq, Jul 2008].

Function:

Probable ligand for integrin in the brain. This is a non catalytic metalloprotease-like protein.

Subunit:

Can bind to LGI1 and LGI4.

Subcellular Location:

Membrane; Single-pass type I membrane protein.

Tissue Specificity:

Expressed predominantly in brain. Slightly detected or not at all in other tissues.

Post-translational modifications:

The precursor is cleaved by a furin endopeptidase.

Similarity:

Contains 1 disintegrin domain.

Contains 1 EGF-like domain.

Contains 1 peptidase M12B domain.

SWISS:

O75078

Gene ID:

4185

Database links:

[Entrez Gene: 4185](#)Human

[Omim: 155120](#)Human

[SwissProt: O75078](#)Human

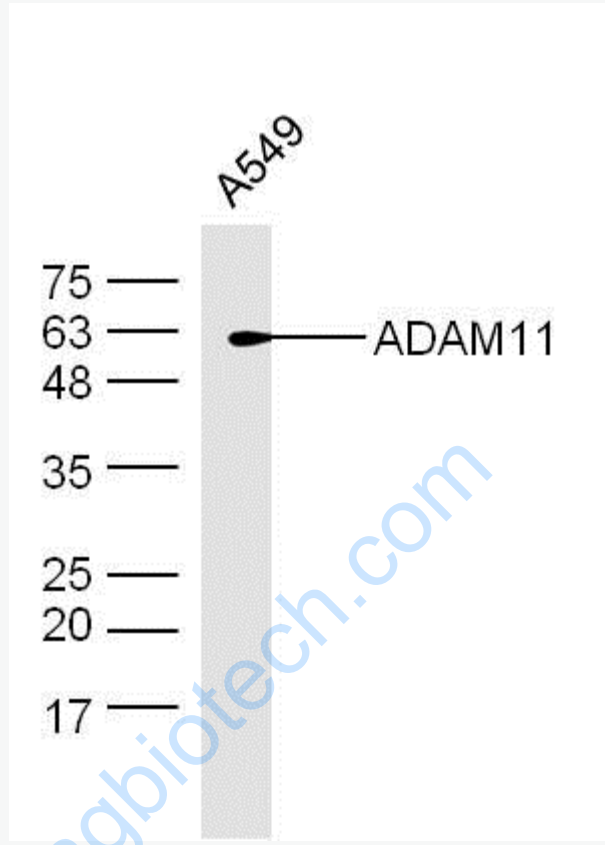
[Unigene: 6088](#)Human

Important Note:

This product as supplied is intended for research use only, not for use in human, therapeutic or diagnostic applications.

Extracellular matrix蛋白

Picture:



Sample: A549 Cell (Human) Lysate at 40 ug

Primary: Anti-ADAM11 (SL5846R) at 1/300 dilution

Secondary: IRDye800CW Goat Anti-Rabbit IgG at 1/20000 dilution

Predicted band size: 60 kD

Observed band size: 60 kD



Sample:

brain (Mouse) Lysate at 40 ug

Primary: Anti-ADAM11 (SL5846R) at 1/300 dilution

Secondary: IRDye800CW Goat Anti-Rabbit IgG at 1/20000 dilution

Predicted band size: 60 kD

Observed band size: 60 kD