



## Rabbit Anti-ADAM18 antibody

SL5849R

<b>Product Name:</b>	ADAM18
<b>Chinese Name:</b>	去整合素样金属蛋白酶18抗体
<b>Alias:</b>	A disintegrin and metalloproteinase domain 18; ADAM 18; ADA18_HUMAN; ADAM 27; ADAM metalloproteinase domain 18; ADAM27; MGC41836; MGC88272; TMDC3; tMDCIII; Transmembrane metalloproteinase like, disintegrin like, and cysteine rich protein III.
<b>Organism Species:</b>	Rabbit
<b>Clonality:</b>	Polyclonal
<b>React Species:</b>	Human,Mouse,Dog,
<b>Applications:</b>	WB=1:500-2000ELISA=1:500-1000IHC-P=1:400-800IHC-F=1:400-800IF=1:100-500 (Paraffin sections need antigen repair) not yet tested in other applications. optimal dilutions/concentrations should be determined by the end user.
<b>Molecular weight:</b>	62kDa
<b>Cellular localization:</b>	The cell membrane
<b>Form:</b>	Lyophilized or Liquid
<b>Concentration:</b>	1mg/ml
<b>immunogen:</b>	KLH conjugated synthetic peptide derived from human ADAM18:301-400/739<Extracellular>
<b>Lsotype:</b>	IgG
<b>Purification:</b>	affinity purified by Protein A
<b>Storage Buffer:</b>	0.01M TBS(pH7.4) with 1% BSA, 0.03% Proclin300 and 50% Glycerol.
<b>Storage:</b>	Store at -20 °C for one year. Avoid repeated freeze/thaw cycles. The lyophilized antibody is stable at room temperature for at least one month and for greater than a year when kept at -20°C. When reconstituted in sterile pH 7.4 0.01M PBS or diluent of antibody the antibody is stable for at least two weeks at 2-4 °C.
<b>PubMed:</b>	<a href="#">PubMed</a>
<b>Product Detail:</b>	ADAM18 was first described as tMDC III (testis-specific Metalloproteinase-like disintegrin-like cysteine-rich protein-III). ADAM18 is a member of the ADAMs family (A Disintegrin And Metalloproteinase), but does not contain the canonical

HExxHxxxxH zinc-binding metalloproteinase catalytic site. The domain structure of the full-length ADAM18 includes a signal sequence, propeptide domain, metalloproteinase-like domain, disintegrin-like domain, cys-rich domain, EGF-like domain, a short spacer region, then the transmembrane domain and a cytoplasmic domain. Like many of the reproductive-specific ADAMS, ADAM18 plays a nonenzymatic role, or (as is the case for ADAMs 1 & 2 (fertilin alpha and beta)), the protein acts in concert with a proteolytically active ADAM to process proteins. Little is known about interactions between ADAM18 and other ADAMS. To date, 4 different sequences for human ADAM18 are published; 739, 715, 182 and 153 amino acids in length.

**Function:**

Sperm surface membrane protein that may be involved in spermatogenesis and fertilization. This is a non catalytic metalloprotease-like protein.

**Subcellular Location:**

Membrane; Single-pass type I membrane protein.

**Tissue Specificity:**

Expressed specifically in testis.

**Post-translational modifications:**

The prodomain and the metalloprotease-like domain are cleaved during the epididymal maturation of the spermatozoa.

**Similarity:**

Contains 1 disintegrin domain.

Contains 1 EGF-like domain.

Contains 1 peptidase M12B domain.

**SWISS:**

Q9Y3Q7

**Gene ID:**

8749

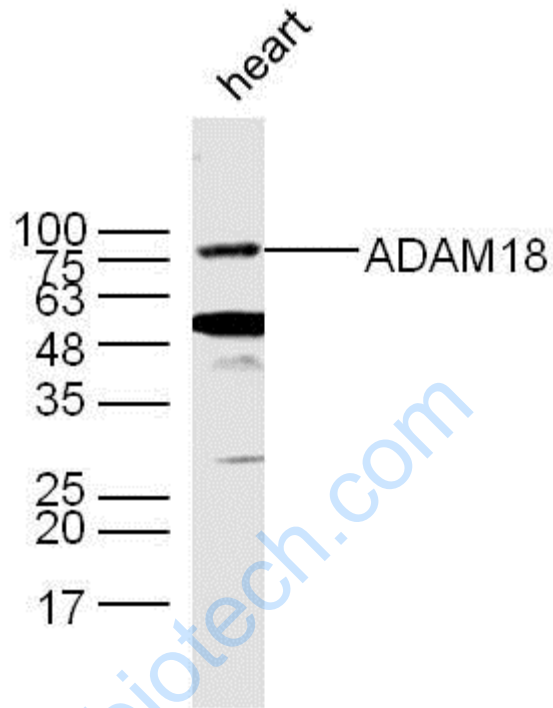
**Database links:**

**Important Note:**

This product as supplied is intended for research use only, not for use in human, therapeutic or diagnostic applications.

Extracellular matrix蛋白

Picture:



Sample:

Heart (Mouse) Lysate at 40 ug

Primary: Anti- ADAM18 (SL5849R) at 1/300 dilution

Secondary: IRDye800CW Goat Anti-Rabbit IgG at 1/20000 dilution

Predicted band size: 62 kD

Observed band size: 75/50 kD