



Rabbit Anti-ADAM23 antibody

SL5853R

Product Name:	ADAM23
Chinese Name:	去整合素样金属蛋白酶23抗体
Alias:	A disintegrin and metalloproteinase domain 23; MDC 3; Metalloproteinase like disintegrin like and cysteine rich protein 3.
Organism Species:	Rabbit
Clonality:	Polyclonal
React Species:	Human,Mouse,Rat,Pig,Cow,Horse,Rabbit,
Applications:	WB=1:500-2000ELISA=1:500-1000IHC-P=1:400-800IHC-F=1:400-800Flow-Cyt=0.2ug/TestIF=1:100-500 (Paraffin sections need antigen repair) not yet tested in other applications. optimal dilutions/concentrations should be determined by the end user.
Molecular weight:	75-95kDa
Cellular localization:	The cell membraneSecretory protein
Form:	Lyophilized or Liquid
Concentration:	1mg/ml
immunogen:	KLH conjugated synthetic peptide derived from human ADAM23:551-650/832<Extracellular>
Lsotype:	IgG
Purification:	affinity purified by Protein A
Storage Buffer:	0.01M TBS(pH7.4) with 1% BSA, 0.03% Proclin300 and 50% Glycerol.
Storage:	Store at -20 °C for one year. Avoid repeated freeze/thaw cycles. The lyophilized antibody is stable at room temperature for at least one month and for greater than a year when kept at -20°C. When reconstituted in sterile pH 7.4 0.01M PBS or diluent of antibody the antibody is stable for at least two weeks at 2-4 °C.
PubMed:	PubMed
Product Detail:	ADAM23 is a non-catalytic metalloprotease-like protein. It is highly expressed in the brain, primarily in the amygdala, caudate nucleus, hypothalamus, thalamus, cerebral cortex and occipital pole, and weakly expressed in the heart. 3 isoforms are produced by alternative splicing, alpha, beta and gamma. ADAM23 may play a role in cell-cell and cell-matrix interactions.

Subunit:

Can bind to LGI1 and LGI4 (By similarity). Ligand for integrin alpha-V/beta-3.

Subcellular Location:

Cell membrane; Single-pass type I membrane protein. Isoform Gamma: Secreted.

Tissue Specificity:

Highly expressed in the brain and weakly expressed in the heart. In the brain, expressed prominently in the amygdala, caudate nucleus, hypothalamus, thalamus, cerebral cortex and occipital pole.

Similarity:

Contains 1 disintegrin domain.

Contains 1 EGF-like domain.

Contains 1 peptidase M12B domain.

SWISS:

O75077

Gene ID:

8745

Database links:

[Entrez Gene: 8745](#)Human

[Entrez Gene: 23792](#)Mouse

[Entrez Gene: 301460](#)Rat

[Omim: 603710](#)Human

[SwissProt: O75077](#)Human

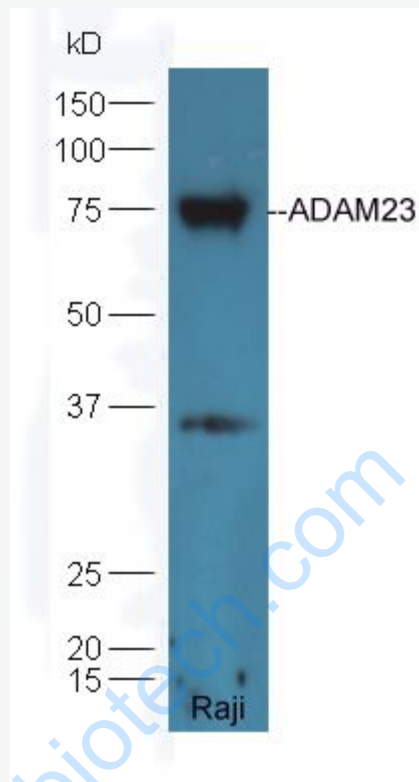
[SwissProt: Q9R1V7](#)Mouse

Important Note:

This product as supplied is intended for research use only, not for use in human, therapeutic or diagnostic applications.

Extracellular matrix蛋白

Picture:



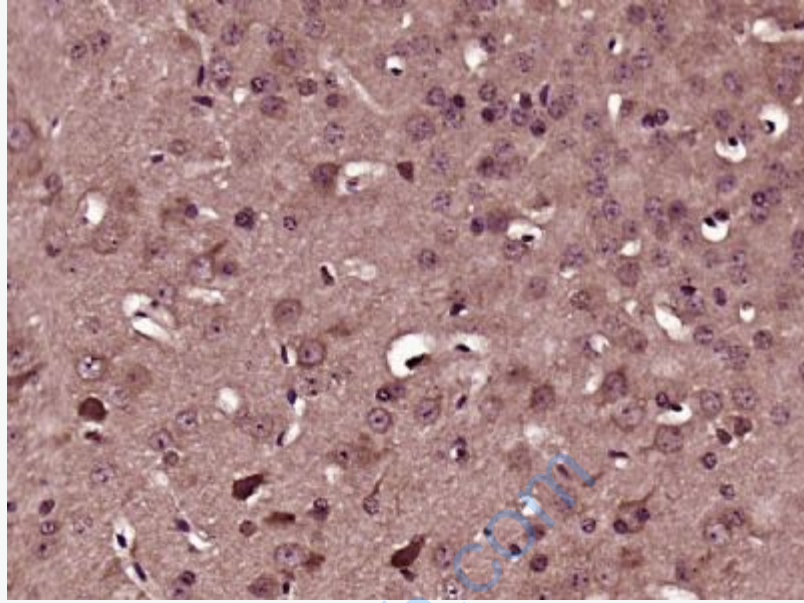
Sample: Raji Cell (Human) Lysate at 40 ug

Primary: Anti-ADAM23 (SL5853R) at 1/300 dilution

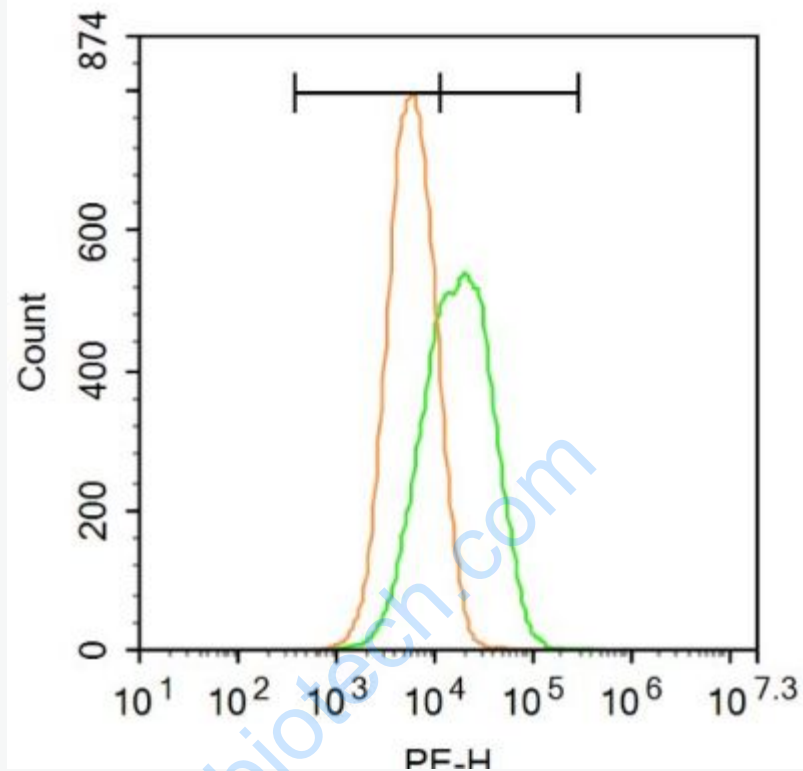
Secondary: HRP conjugated Goat-Anti-rabbit IgG (SL5853R) at 1/5000 dilution

Predicted band size: 75-95kD

Observed band size: 75/35 kD



Paraformaldehyde-fixed, paraffin embedded (Mouse brain); Antigen retrieval by boiling in sodium citrate buffer (pH6.0) for 15min; Block endogenous peroxidase by 3% hydrogen peroxide for 20 minutes; Blocking buffer (normal goat serum) at 37°C for 30min; Antibody incubation with (ADAM23) Polyclonal Antibody, Unconjugated (SL5853R) at 1:500 overnight at 4°C, followed by a conjugated secondary (sp-0023) for 20 minutes and DAB staining.



Blank control: U87MG.

Primary Antibody (green line): Rabbit Anti-ADAM23 antibody (SL5853R)

Dilution: 1 μ g /10⁶ cells;

Isotype Control Antibody (orange line): Rabbit IgG .

Secondary Antibody : Goat anti-rabbit IgG-PE

Dilution: 1 μ g /test.

The cells were incubated in 5%BSA to block non-specific protein-protein interactions for 30 min at room temperature .Cells stained with Primary Antibody for 30 min at room temperature. The secondary antibody used for 40 min at room temperature. Acquisition of 20,000 events was performed.