



Rabbit Anti-KLK12 antibody

SL5865R

Product Name:	KLK12
Chinese Name:	激肽释放酶12抗体
Alias:	Kallikrein12; Kallikrein-12; Kallikrein like protein 5; Kallikrein related peptidase 12; KLK 12; KLK L5; KLK12; KLKL5.
Organism Species:	Rabbit
Clonality:	Polyclonal
React Species:	Human,Mouse,Rat,Cow,
Applications:	WB=1:500-2000ELISA=1:500-1000IHC-P=1:400-800IHC-F=1:400-800IF=1:100-500 (Paraffin sections need antigen repair) not yet tested in other applications. optimal dilutions/concentrations should be determined by the end user.
Molecular weight:	25kDa
Cellular localization:	Secretory protein
Form:	Lyophilized or Liquid
Concentration:	1mg/ml
immunogen:	KLH conjugated synthetic peptide derived from human KLK12:151-250/248
Lsotype:	IgG
Purification:	affinity purified by Protein A
Storage Buffer:	0.01M TBS(pH7.4) with 1% BSA, 0.03% Proclin300 and 50% Glycerol.
Storage:	Store at -20 °C for one year. Avoid repeated freeze/thaw cycles. The lyophilized antibody is stable at room temperature for at least one month and for greater than a year when kept at -20°C. When reconstituted in sterile pH 7.4 0.01M PBS or diluent of antibody the antibody is stable for at least two weeks at 2-4 °C.
PubMed:	PubMed
Product Detail:	Kallikrein 12, also known as Kallikrein-like5 (KLK-L5), is a trypsin-like serine proteinase. It was discovered by cloning the kallikrein locus on chromosome 19, and was found to be similar to the other kallikrein family genes. It is produced by a number of tissues, including pancreas, salivary gland, breast, prostate, uterus, lung, thymus, thyroid, brain, stomach and colon. Kallikrein 12 message has been reported to be decreased in breast cancer. Different splice variants of kallikrein-12 have been

identified; a 254 amino acid form, 248 amino acids form, and a truncated 111 amino acid form.

Subcellular Location:

Secreted.

Similarity:

Belongs to the peptidase S1 family. Kallikrein subfamily.
Contains 1 peptidase S1 domain.

SWISS:

Q9UKR0

Gene ID:

4384

Database links:

[Entrez Gene: 43849](#)Human

[Omir: 605539](#)Human

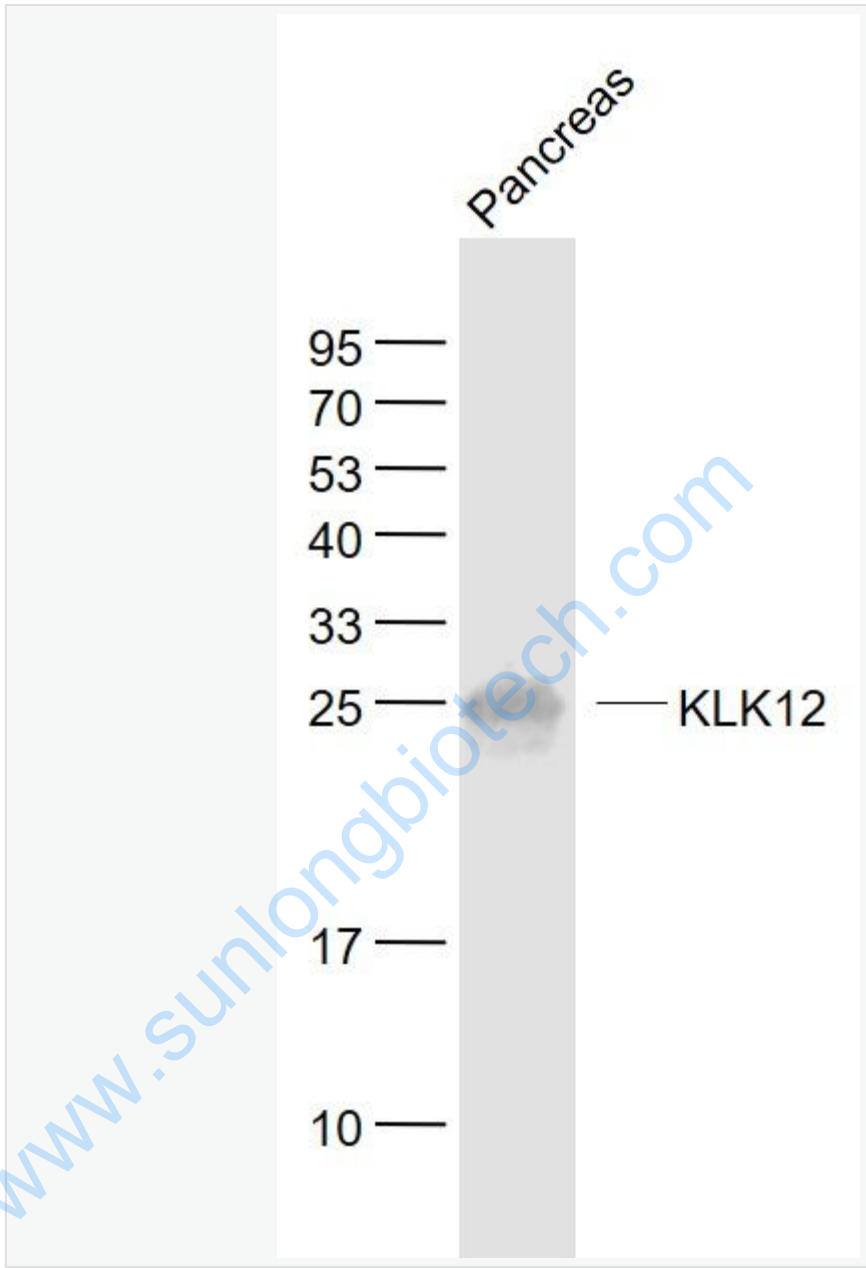
[SwissProt: Q9UKR0](#)Human

Important Note:

This product as supplied is intended for research use only, not for use in human, therapeutic or diagnostic applications.

Extracellular matrix蛋白

Picture:



Sample:

Pancreas (Mouse) Lysate at 40 ug

Primary: Anti- KLK12 (SL5865R) at 1/1000 dilution

Secondary: IRDye800CW Goat Anti-Rabbit IgG at 1/20000 dilution

Predicted band size: 25 kD

	Observed band size: 25 kD
--	---------------------------

www.sunlongbiotech.com