



## Rabbit Anti-DLL4 antibody

SL5909R

<b>Product Name:</b>	DLL4
<b>Chinese Name:</b>	DeltaD抗体
<b>Alias:</b>	DeltaD; Aei; After eight; dld; DLL4_HUMAN; Delta-like protein 4; Drosophila Delta homolog 4; Delta4.
<b>Organism Species:</b>	Rabbit
<b>Clonality:</b>	Polyclonal
<b>React Species:</b>	Human,Mouse,Rat,Dog,Pig,Cow,Horse,
<b>Applications:</b>	WB=1:500-2000ELISA=1:500-1000 not yet tested in other applications. optimal dilutions/concentrations should be determined by the end user.
<b>Molecular weight:</b>	75kDa
<b>Cellular localization:</b>	The cell membrane
<b>Form:</b>	Lyophilized or Liquid
<b>Concentration:</b>	1mg/ml
<b>immunogen:</b>	KLH conjugated synthetic peptide derived from human DeltaD:551-650/685
<b>Lsotype:</b>	IgG
<b>Purification:</b>	affinity purified by Protein A
<b>Storage Buffer:</b>	0.01M TBS(pH7.4) with 1% BSA, 0.03% Proclin300 and 50% Glycerol.
<b>Storage:</b>	Store at -20 °C for one year. Avoid repeated freeze/thaw cycles. The lyophilized antibody is stable at room temperature for at least one month and for greater than a year when kept at -20°C. When reconstituted in sterile pH 7.4 0.01M PBS or diluent of antibody the antibody is stable for at least two weeks at 2-4 °C.
<b>PubMed:</b>	<a href="#">PubMed</a>
<b>Product Detail:</b>	DeltaD is one of the 4 members of the zebrafish Delta family of Notch ligands, important in the control of cell differentiation in many tissues. DeltaD acts as a ligand for Notch receptors and is involved in primary neurogenesis and somitogenesis. It can activate Notch receptors, thereby playing a key role in lateral inhibition, a process that prevents the immediate neighbors of each nascent neural cell from simultaneously embarking on neural differentiation. It is required in somite segmentation to keep the oscillations of neighboring presomitic mesoderm cells synchronized.

**Function:**

Cell surface proteoglycan that bears heparan sulfate. Required for cell division patterning during post-embryonic development of the nervous system.

**Subcellular Location:**

Cell membrane.

**Similarity:**

Belongs to the glypican family.

**SWISS:**

Q9NR61

**Gene ID:**

54567

**Database links:**

[Entrez Gene: 54567](#)Human

[Entrez Gene: 54485](#)Mouse

[Entrez Gene: 311332](#)Rat

[Omim: 605185](#)Human

[SwissProt: Q9NR61](#)Human

[SwissProt: Q9JI71](#)Mouse

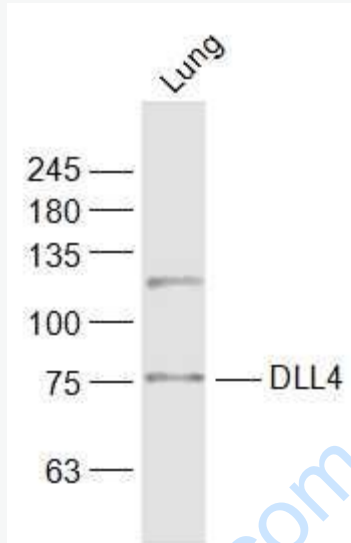
[Unigene: 511076](#)Human

[Unigene: 143719](#)Mouse

**Important Note:**

This product as supplied is intended for research use only, not for use in human, therapeutic or diagnostic applications.

Picture:



Sample:

Lung (Rat) Lysate at 40 ug

Primary: Anti-DLL4 (SL5909R) at 1/1000 dilution

Secondary: IRDye800CW Goat Anti-Rabbit IgG at 1/20000 dilution

Predicted band size: 75 kD

Observed band size: 75 kD