




Rabbit Anti-CYPA antibody

SL5912R

Product Name:	CYPA
Chinese Name:	亲环蛋白(亲环素)PPIA抗体
Alias:	Cyclophilin A; CyclophilinA; Cyclosporin A binding protein; Cyclosporin A-binding protein; CYPA; CYPH; Peptidyl prolyl cis trans isomerase A; Peptidyl-prolyl cis-trans isomerase A; Peptidylprolyl isomerase A; PPIA; PPIA protein; PPIA_HUMAN; PPIase A; Rotamase A; RotamaseA; T cell cyclophilin.
文献引用  :	Specific References(1) SL5912R has been referenced in 1 publications. [IF=3.58] Kang, Taewook, et al. "Large-scale analysis of posttranslational modifications in the hippocampus of patients with Alzheimer's disease using pI shift and label-free quantification without enrichment." Analytical and Bioanalytical Chemistry (2014): 1-14. WB;Human. PubMed:25120180
Organism Species:	Rabbit
Clonality:	Polyclonal
React Species:	Human,Mouse,Rat,Dog,Pig,Cow,Rabbit,
Applications:	WB=1:500-2000ELISA=1:500-1000IHC-P=1:400-800IHC-F=1:400-800Flow-Cyt=1µg/TestIF=1:100-500 (Paraffin sections need antigen repair) not yet tested in other applications. optimal dilutions/concentrations should be determined by the end user.
Molecular weight:	18kDa
Cellular localization:	cytoplasmic
Form:	Lyophilized or Liquid
Concentration:	1mg/ml
immunogen:	KLH conjugated synthetic peptide derived from human Cyclophilin A.:101-165/165
Lsotype:	IgG
Purification:	affinity purified by Protein A
Storage Buffer:	0.01M TBS(pH7.4) with 1% BSA, 0.03% Proclin300 and 50% Glycerol.

Storage:	Store at -20 °C for one year. Avoid repeated freeze/thaw cycles. The lyophilized antibody is stable at room temperature for at least one month and for greater than a year when kept at -20°C. When reconstituted in sterile pH 7.4 0.01M PBS or diluent of antibody the antibody is stable for at least two weeks at 2-4 °C.
PubMed:	PubMed
Product Detail:	<p>The immunosuppressant cyclosporin A (CsA) forms a trimolecular complex with cyclophilin and calcineurins to inhibit calcineurin phosphatase activity (1). Cyclophilins are conserved, ubiquitous and abundant cytosolic peptidyl-prolyl cis-trans isomerases that accelerate the isomerization of XaaPro peptide bonds and the refolding of proteins (2,3). Human cyclophilin A (CyPA), an intracellular protein of 165 amino acids, is the target of the CsA and is encoded by a single unique gene conserved from yeast to humans (4,5). CyPA is known for its involvement in T cell differentiation and proliferation and is highly expressed in brain (6). CyPA is incorporated into the virion of the type 1 human immunodeficiency virus (HIV-1) via a direct interaction with the capsid domain of the viral Gag polyprotein and is crucial for efficient viral replication (7,8). Cyclophilin B (CyPB) is a member of the cyclophilin family with specific N- and C-terminal extensions. Unlike CyPA, CyPB has a signal sequence leading to its translocation in the endoplasmic reticulum. CyPB is secreted in biological fluids such as blood or milk and binds to a specific receptor present on the human lymphoblastic cell line Jurkat and on human peripheral blood lymphocytes (9,10).</p> <p>Function: PPIases accelerate the folding of proteins. It catalyzes the cis-trans isomerization of proline imidic peptide bonds in oligopeptides.</p> <p>Subcellular Location: Cytoplasm.</p> <p>Similarity: Belongs to the cyclophilin-type PPIase family. PPIase A subfamily. Contains 1 PPIase cyclophilin-type domain.</p> <p>SWISS: P62937</p> <p>Gene ID: 5478</p> <p>Database links: Entrez Gene: 5478Human Entrez Gene: 268373Mouse Entrez Gene: 100360977Rat Entrez Gene: 100362969Rat</p>

[Entrez Gene: 25518](#)Rat

[Omin: 123840](#)Human

[SwissProt: P62937](#)Human

[SwissProt: P17742](#)Mouse

[SwissProt: P10111](#)Rat

[Unigene: 356331](#)Human

[Unigene: 598115](#)Human

[Unigene: 5246](#)Mouse

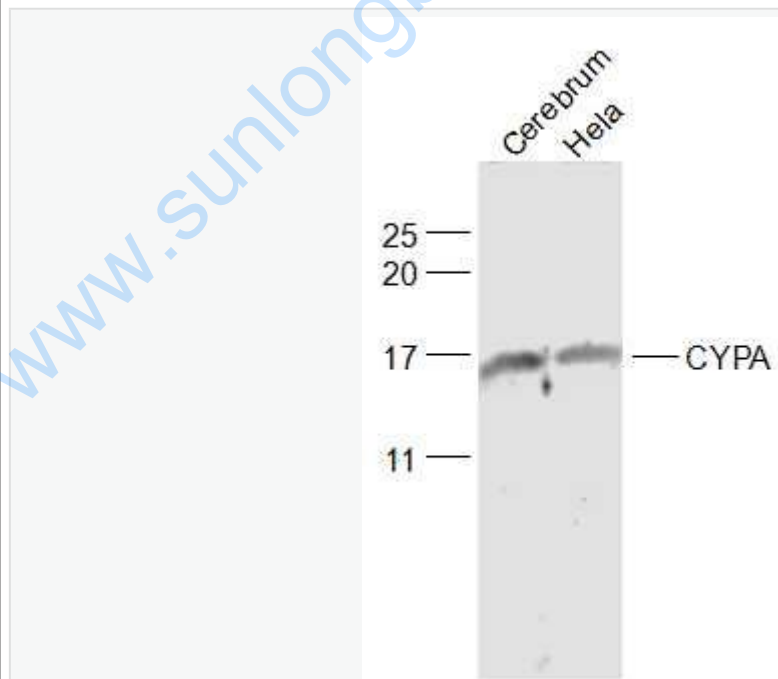
[Unigene: 118772](#)Rat

[Unigene: 1463](#)Rat

Important Note:

This product as supplied is intended for research use only, not for use in human, therapeutic or diagnostic applications.

Picture:



Sample:

Cerebrum (Rat) Lysate at 40 ug

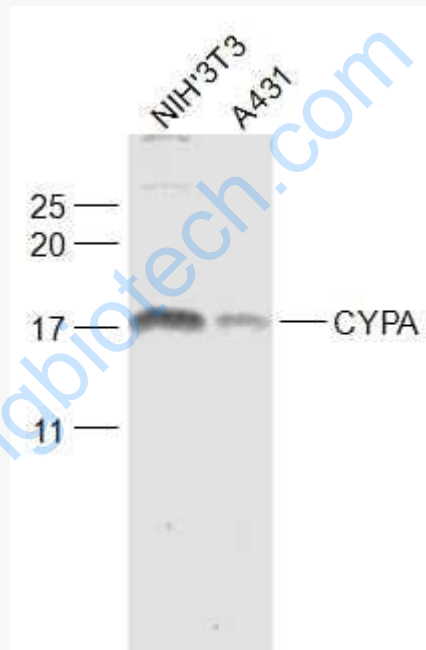
Hela(Human) Cell Lysate at 30 ug

Primary: Anti-CYPA (SL5912R) at 1/1000 dilution

Secondary: IRDye800CW Goat Anti-Rabbit IgG at 1/20000 dilution

Predicted band size: 18 kD

Observed band size: 17/18 kD



Sample:

NIH/3T3(Mouse) Cell Lysate at 30 ug

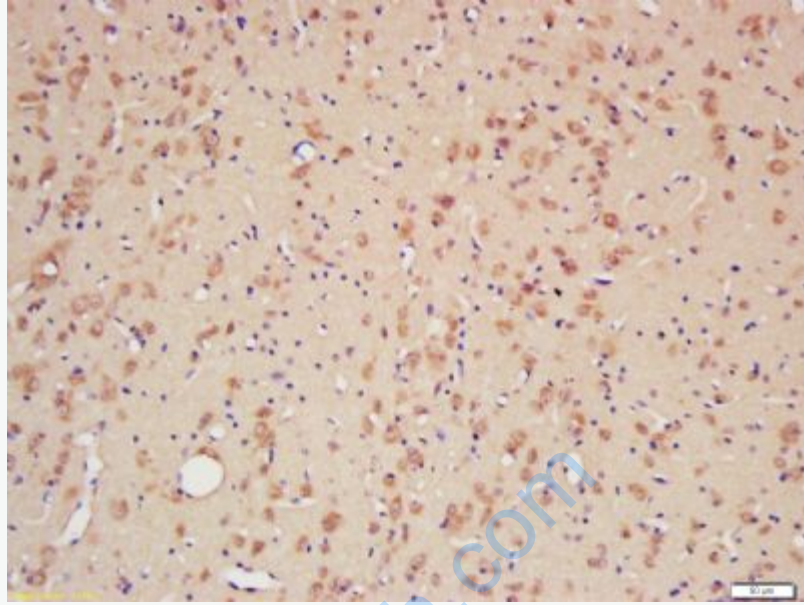
A431(Human) Cell Lysate at 30 ug

Primary: Anti-CYPA (SL5912R) at 1/1000 dilution

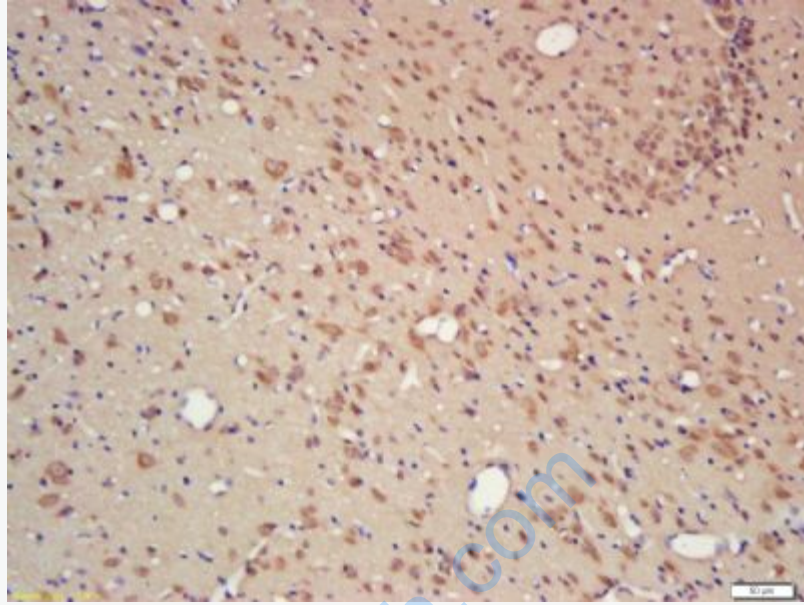
Secondary: IRDye800CW Goat Anti-Rabbit IgG at 1/20000 dilution

Predicted band size: 18 kD

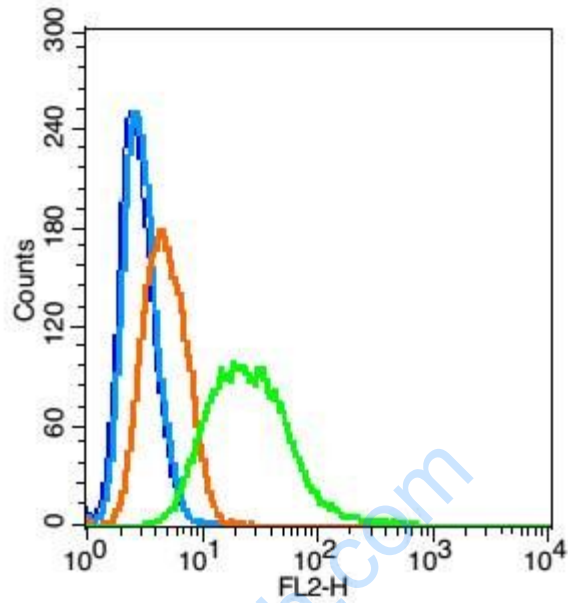
Observed band size: 18 kD



Tissue/cell: rat brain tissue; 4% Paraformaldehyde-fixed and paraffin-embedded;
Antigen retrieval: citrate buffer (0.01M, pH 6.0), Boiling bathing for 15min; Block endogenous peroxidase by 3% Hydrogen peroxide for 30min; Blocking buffer (normal goat serum,C-0005) at 37°C for 20 min;
Incubation: Anti-CYPA Polyclonal Antibody, Unconjugated(SL5912R) 1:200, overnight at 4°C, followed by conjugation to the secondary antibody(SP-0023) and DAB(C-0010) staining



Tissue/cell: rat brain tissue; 4% Paraformaldehyde-fixed and paraffin-embedded;
Antigen retrieval: citrate buffer (0.01M, pH 6.0), Boiling bathing for 15min; Block endogenous peroxidase by 3% Hydrogen peroxide for 30min; Blocking buffer (normal goat serum,C-0005) at 37°C for 20 min;
Incubation: Anti-CYPA Polyclonal Antibody, Unconjugated(SL5912R) 1:200, overnight at 4°C, followed by conjugation to the secondary antibody(SP-0023) and DAB(C-0010) staining



Blank control(blue): HeLa(fixed with 2% paraformaldehyde (10 min) , then permeabilized with 90% ice-cold methanol for 30 min on ice).

Primary Antibody:Rabbit Anti- CYP A antibody(SL5912R), Dilution: 1 μ g in 100 μ L 1X PBS containing 0.5% BSA;

Isotype Control Antibody: Rabbit IgG(orange) ,used under the same conditions);

Secondary Antibody: Goat anti-rabbit IgG-PE(white blue), Dilution: 1:200 in 1 X PBS containing 0.5% BSA.