



Rabbit Anti-Calreticulin antibody

SL5913R

Product Name:	Calreticulin
Chinese Name:	钙网蛋白抗体
Alias:	Autoantigen RO; CALR; CALR protein; CALR_HUMAN; Calregulin; Calreticulin; cC1qR; CRP55; CRTC; Endoplasmic reticulum resident protein 60; ERp60; grp60; HACBP; RO; Sicca syndrome antigen A; SSA.
文献引用 PubMed :	<p>Specific References(2) SL5913R has been referenced in 2 publications.</p> <p>[IF=1.58]Chen, Beilei, et al. "Calreticulin Binds to Fas Ligand and Inhibits Neuronal Cell Apoptosis Induced by Ischemia-reperfusion Injury." BioMed Research International.Human. PubMed:26583143</p> <p>[IF=5.69]Tanaka, Mamoru, et al. "Immunogenic cell death due to a new photodynamic therapy (PDT) with glycoconjugated chlorin (G-chlorin)." Oncotarget (2016).IHC-P;Mouse. PubMed:27363018</p>
Organism Species:	Rabbit
Clonality:	Polyclonal
React Species:	Human,Mouse,Rat,Chicken,Dog,Pig,Cow,Horse,Rabbit,Guinea Pig,
Applications:	WB=1:500-2000ELISA=1:500-1000IHC-P=1:400-800IHC-F=1:400-800Flow-Cyt=1µg/TestIF=1:100-500 (Paraffin sections need antigen repair) not yet tested in other applications. optimal dilutions/concentrations should be determined by the end user.
Molecular weight:	44kDa
Cellular localization:	cytoplasmicThe cell membraneExtracellular matrixSecretory protein
Form:	Lyophilized or Liquid
Concentration:	1mg/ml

immunogen:	KLH conjugated synthetic peptide derived from human Calreticulin:101-200/417
Lsotype:	IgG
Purification:	affinity purified by Protein A
Storage Buffer:	0.01M TBS(pH7.4) with 1% BSA, 0.03% Proclin300 and 50% Glycerol.
Storage:	Store at -20 °C for one year. Avoid repeated freeze/thaw cycles. The lyophilized antibody is stable at room temperature for at least one month and for greater than a year when kept at -20°C. When reconstituted in sterile pH 7.4 0.01M PBS or diluent of antibody the antibody is stable for at least two weeks at 2-4 °C.
PubMed:	PubMed
Product Detail:	<p>Molecular calcium-binding chaperone promoting folding, oligomeric assembly and quality control in the ER via the calreticulin/calnexin cycle. This lectin interacts transiently with almost all of the monoglucosylated glycoproteins that are synthesized in the ER. Interacts with the DNA-binding domain of NR3C1 and mediates its nuclear export.</p> <p>Subunit: Monomer. Component of an EIF2 complex at least composed of CELF1/CUGBP1, CALR, CALR3, EIF2S1, EIF2S2, HSP90B1 and HSPA5. Interacts with PDIA3/ERp57 (By similarity). Interacts with NR3C1 and TRIM21. Interacts with GABARAP.</p> <p>Subcellular Location: Endoplasmic reticulum lumen. Cytoplasm, cytosol. Secreted, extracellular space, extracellular matrix. Cell surface.</p> <p>Similarity: Belongs to the calreticulin family.</p> <p>SWISS: P27797</p> <p>Gene ID: 811</p> <p>Database links:</p> <p>Entrez Gene: 41166Fruit fly (Drosophila melanogaster)</p> <p>Entrez Gene: 811Human</p> <p>Entrez Gene: 12317Mouse</p> <p>Entrez Gene: 100009050Rabbit</p> <p>Entrez Gene: 64202Rat</p> <p>Omim: 109091Human</p> <p>SwissProt: P29413Fruit fly (Drosophila melanogaster)</p>

[SwissProt: P27797](#)Human

[SwissProt: P14211](#)Mouse

[SwissProt: P15253](#)Rabbit

[SwissProt: P18418](#)Rat

[Unigene: 2457](#)Fruit fly (*Drosophila melanogaster*)

[Unigene: 515162](#)Human

[Unigene: 1971](#)Mouse

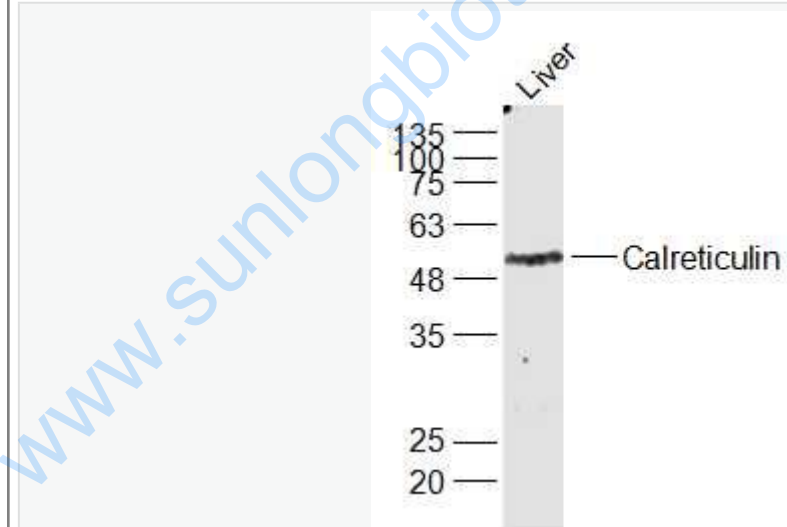
[Unigene: 467043](#)Mouse

[Unigene: 974](#)Rat

Important Note:

This product as supplied is intended for research use only, not for use in human, therapeutic or diagnostic applications.

Picture:



Sample:

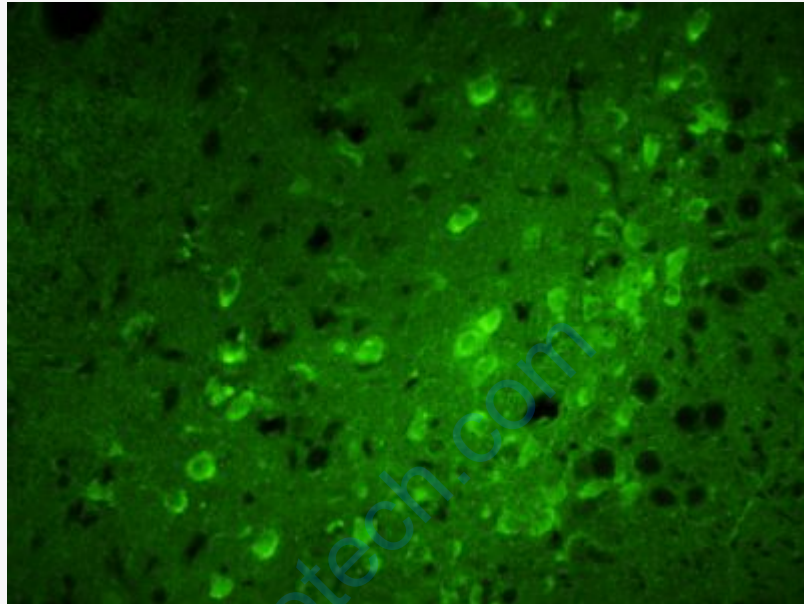
Liver (Mouse) Lysate at 40 ug

Primary: Anti-Calreticulin ? (SL5913R) at 1/1000 dilution

Secondary: IRDye800CW Goat Anti-Rabbit IgG at 1/20000 dilution

Predicted band size: 44 kD

Observed band size: 49 kD



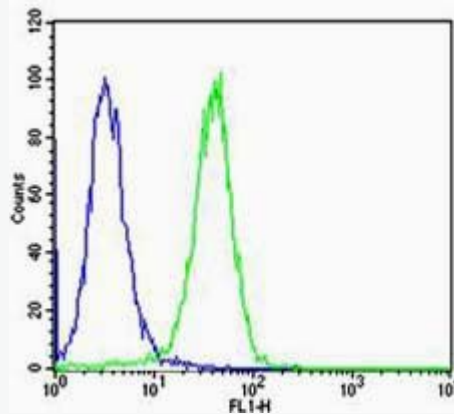
Tissue/cell: rat brain tissue;4% Paraformaldehyde-fixed and paraffin-embedded;

Antigen retrieval: citrate buffer (0.01M, pH 6.0), Boiling bathing for 15min;

Blocking buffer (normal goat serum,C-0005) at 37°C for 20 min;

Incubation: Anti-Calreticulin Polyclonal Antibody, FITC conjugated (SL5913R)

1:100, 40 minutes at 37°C.



Cell: HeLa

Concentration: 1:100

Host/Isotype: Rabbit/IgG

Flow cytometric analysis of Rabbit IgG isotype control (Cat#: bs-5913R) on HeLa (green) compared with control in the absence of primary antibody (blue) followed by Alexa Fluor 488-conjugated goat anti-rabbit IgG(H+L) secondary antibody .

www.sunlongbiotech.com