



Rabbit Anti-PGRMC antibody

SL5922R

Product Name:	PGRMC
Chinese Name:	孕激素受体膜相关元件抗体
Alias:	HPR6.6; Membrane associated progesterone receptor component 1; y mPR; PGRMC1; PGRMC 1; PGRMC-1; Progesterone receptor membrane component 1.
Organism Species:	Rabbit
Clonality:	Polyclonal
React Species:	Human,Mouse,Rat,Chicken,Pig,Cow,Rabbit,
Applications:	ELISA=1:500-1000IHC-P=1:400-800IHC-F=1:400-800IF=1:100-500 (Paraffin sections need antigen repair) not yet tested in other applications. optimal dilutions/concentrations should be determined by the end user.
Molecular weight:	21kDa
Cellular localization:	cytoplasmicThe cell membrane
Form:	Lyophilized or Liquid
Concentration:	1mg/ml
immunogen:	KLH conjugated synthetic peptide derived from human PGRMC:75-170/195
Lsotype:	IgG
Purification:	affinity purified by Protein A
Storage Buffer:	0.01M TBS(pH7.4) with 1% BSA, 0.03% Proclin300 and 50% Glycerol.
Storage:	Store at -20 °C for one year. Avoid repeated freeze/thaw cycles. The lyophilized antibody is stable at room temperature for at least one month and for greater than a year when kept at -20°C. When reconstituted in sterile pH 7.4 0.01M PBS or diluent of antibody the antibody is stable for at least two weeks at 2-4 °C.
PubMed:	PubMed
Product Detail:	PGRMC1 is a progesterone receptor component of 195 aa with a 26 residue N terminal hydrophobic region and no N terminal glycosylation site. It has an overall homology of 50% with PGRMC2 but their C terminal regions have a 68% homology, including a highly conserved 58 residue sequence.PGRMC1 is a heme bind proteins that is up-regulated in several cancers. In breast tumors, PGRMC1 is associated with hypoxia estrogen receptor-negative status. PGRMC1 is also shown to stimulate AKT

phosphorylation and is known to stabilise the EGFR receptor tyrosine kinase.

Function:

Receptor for progesterone (By similarity).

Subcellular Location:

Microsome membrane; Single-pass membrane protein (By similarity). Endoplasmic reticulum membrane; Single-pass membrane protein (By similarity).

Tissue Specificity:

Widely expressed, with highest expression in liver and kidney.

Similarity:

Belongs to the cytochrome b5 family. MAPR subfamily.
Contains 1 cytochrome b5 heme-binding domain.

SWISS:

O00264

Gene ID:

10857

Database links:

[Entrez Gene: 317706](#)Cow

[Entrez Gene: 10857](#)Human

[Entrez Gene: 53328](#)Mouse

[Entrez Gene: 396946](#)Pig

[Entrez Gene: 291948](#)Rat

[Omim: 300435](#)Human

[SwissProt: Q17QC0](#)Cow

[SwissProt: O00264](#)Human

[SwissProt: O55022](#)Mouse

[SwissProt: Q95250](#)Pig

[SwissProt: P70580](#)Rat

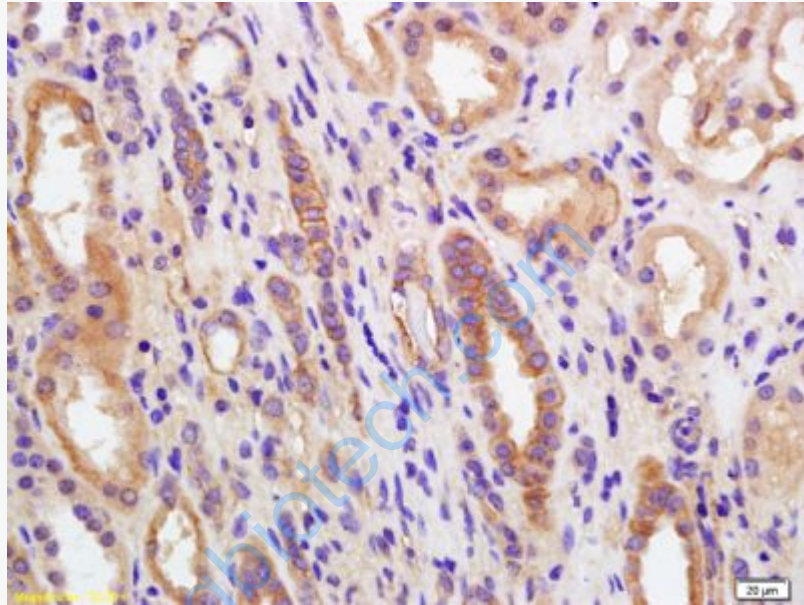
[Unigene: 90061](#)Human

[Unigene: 9052](#)Mouse

[Unigene: 102356](#)Rat

Important Note:

This product as supplied is intended for research use only, not for use in human, therapeutic or diagnostic applications.



Picture:

Tissue/cell: human kidney tissue; 4% Paraformaldehyde-fixed and paraffin-embedded;

Antigen retrieval: citrate buffer (0.01M, pH 6.0), Boiling bathing for 15min; Block endogenous peroxidase by 3% Hydrogen peroxide for 30min; Blocking buffer (normal goat serum,C-0005) at 37°C for 20 min;

Incubation: Anti-PGRMC Polyclonal Antibody, Unconjugated(SL5922R) 1:200, overnight at 4°C, followed by conjugation to the secondary antibody(SP-0023) and DAB(C-0010) staining