



## Rabbit Anti-ANP32C antibody

SL5927R

<b>Product Name:</b>	ANP32C
<b>Chinese Name:</b>	致瘤磷蛋白32相关蛋白1抗体
<b>Alias:</b>	Acidic (leucine rich) nuclear phosphoprotein 32 family, member C; ANP32 C; Phosphoprotein 32 related protein 1; Tumorigenic protein pp32r1.
<b>Organism Species:</b>	Rabbit
<b>Clonality:</b>	Polyclonal
<b>React Species:</b>	Human,Mouse,Rat,Dog,Cow,Horse,Rabbit,
<b>Applications:</b>	WB=1:500-2000ELISA=1:500-1000IHC-P=1:400-800IHC-F=1:400-800IF=1:100-500 (Paraffin sections need antigen repair) not yet tested in other applications. optimal dilutions/concentrations should be determined by the end user.
<b>Molecular weight:</b>	26kDa
<b>Cellular localization:</b>	The nucleus
<b>Form:</b>	Lyophilized or Liquid
<b>Concentration:</b>	1mg/ml
<b>immunogen:</b>	KLH conjugated synthetic peptide derived from human ANP32C:81-180/234
<b>Lsotype:</b>	IgG
<b>Purification:</b>	affinity purified by Protein A
<b>Storage Buffer:</b>	0.01M TBS(pH7.4) with 1% BSA, 0.03% Proclin300 and 50% Glycerol.
<b>Storage:</b>	Store at -20 °C for one year. Avoid repeated freeze/thaw cycles. The lyophilized antibody is stable at room temperature for at least one month and for greater than a year when kept at -20°C. When reconstituted in sterile pH 7.4 0.01M PBS or diluent of antibody the antibody is stable for at least two weeks at 2-4 °C.
<b>PubMed:</b>	<a href="#">PubMed</a>
<b>Product Detail:</b>	The protein encoded by ANP32C is one of at least two proteins that are similar in amino acid sequence to PP32 and are part of the same acidic nuclear phosphoprotein gene family. However, unlike PP32, the encoded protein is tumorigenic. The tumor suppressor function of PP32 has been localized to a 25 amino acid region that is divergent between PP32 and the protein encoded by this gene. This gene does not contain introns.

**Tissue Specificity:**

Expressed in activated stem cells, such as mobilized CD34+ cells and cord blood CD34+ cells, but not in resting bone marrow CD34+ cells. Expressed in a variety of neoplastic cell lines, mainly in prostatic adenocarcinoma cell lines. Not expressed in normal prostatic tissue.

**Similarity:**

Belongs to the ANP32 family.  
Contains 4 LRR (leucine-rich) repeats.

**SWISS:**

O43423

**Gene ID:**

23520

**Database links:**

[Entrez Gene: 23520](#)Human

[Entrez Gene: 448829](#)Mouse

[Entrez Gene: 680377](#)Rat

[Oimim: 606877](#)Human

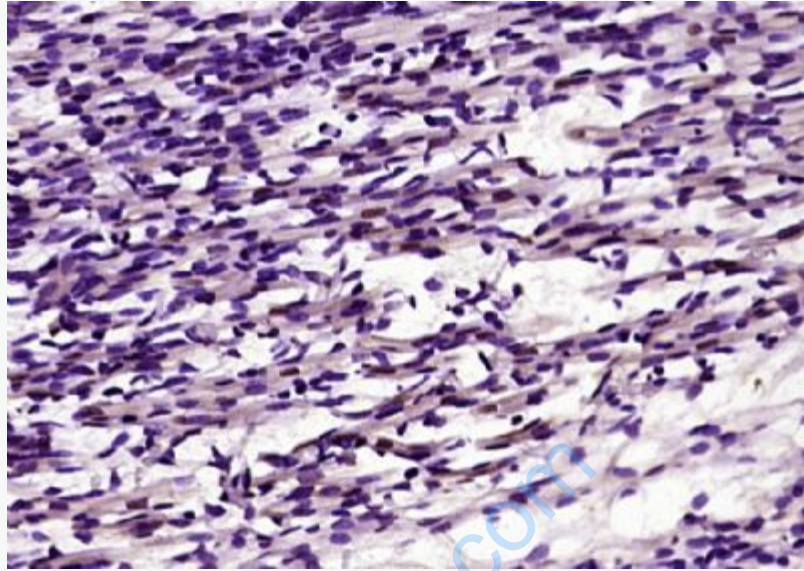
[SwissProt: O43423](#)Human

[SwissProt: Q64G17](#)Mouse

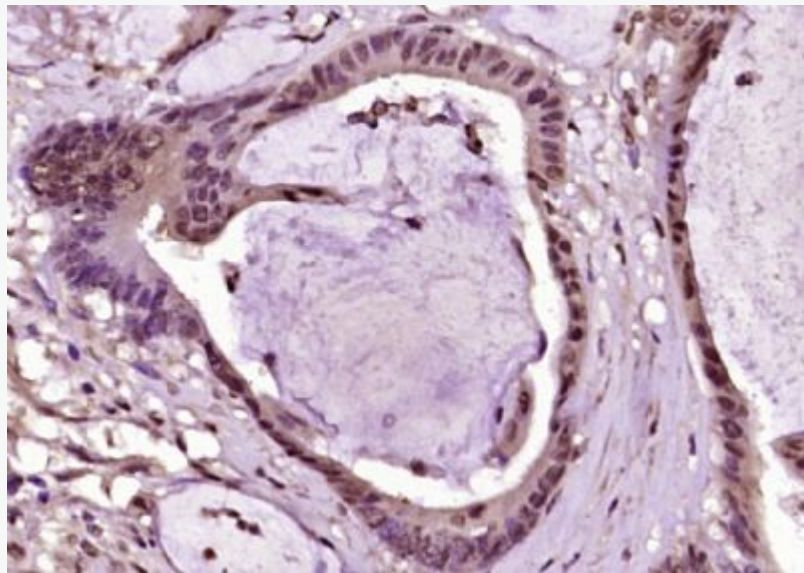
[Unigene: 661161](#)Human

**Important Note:**

This product as supplied is intended for research use only, not for use in human, therapeutic or diagnostic applications.



Paraformaldehyde-fixed, paraffin embedded (mouse embryos tissue); Antigen retrieval by boiling in sodium citrate buffer (pH6.0) for 15min; Block endogenous peroxidase by 3% hydrogen peroxide for 20 minutes; Blocking buffer (normal goat serum) at 37°C for 30min; Antibody incubation with (ANP32C) Polyclonal Antibody, Unconjugated (SL5927R) at 1:200 overnight at 4°C, followed by operating according to SP Kit(Rabbit) (sp-0023) instructions and DAB staining.



**Picture:**

Paraformaldehyde-fixed, paraffin embedded (human colon carcinoma); Antigen retrieval by boiling in sodium citrate buffer (pH6.0) for 15min; Block endogenous peroxidase by 3% hydrogen peroxide for 20 minutes; Blocking buffer (normal goat serum) at 37°C for 30min; Antibody incubation with (ANP32C) Polyclonal Antibody, Unconjugated (SL5927R) at 1:200 overnight at 4°C, followed by operating according to SP Kit(Rabbit) (sp-0023) instructions and DAB staining.

[www.sunlongbiotech.com](http://www.sunlongbiotech.com)