



Rabbit Anti-SERINC3 antibody

SL5942R

Product Name:	SERINC3
Chinese Name:	丝氨酸合并蛋白3抗体 (Tumour 差异表达蛋白)
Alias:	TMS 1; TMS-1; AIGP1; DIFF33; SBBI99; serine incorporator 3; TDE; TDE1; Tumor differentially expressed protein 1; SERC3_HUMAN.
Organism Species:	Rabbit
Clonality:	Polyclonal
React Species:	Human,Mouse,Rat,Chicken,Dog,Cow,Horse,Rabbit,
Applications:	WB=1:500-2000ELISA=1:500-1000IHC-P=1:400-800IHC-F=1:400-800ICC=1:100-500IF=1:100-500 (Paraffin sections need antigen repair) not yet tested in other applications. optimal dilutions/concentrations should be determined by the end user.
Molecular weight:	53kDa
Cellular localization:	The cell membrane
Form:	Lyophilized or Liquid
Concentration:	1mg/ml
immunogen:	KLH conjugated synthetic peptide derived from human SERINC3:51-150/473<Extracellular>
Lsotype:	IgG
Purification:	affinity purified by Protein A
Storage Buffer:	0.01M TBS(pH7.4) with 1% BSA, 0.03% Proclin300 and 50% Glycerol.
Storage:	Store at -20 °C for one year. Avoid repeated freeze/thaw cycles. The lyophilized antibody is stable at room temperature for at least one month and for greater than a year when kept at -20°C. When reconstituted in sterile pH 7.4 0.01M PBS or diluent of antibody the antibody is stable for at least two weeks at 2-4 °C.
PubMed:	PubMed
Product Detail:	TDE1, tumor differentially expressed protein 1, is a multi-pass membrane protein also known as serine incorporator 3. Also found on the membranes of the Golgi apparatus within cells, TDE1 is highly expressed in neuronal populations but is also found in thymus, kidney, liver and testis. Expression levels of TDE1 in tumors can be as much as tenfold the amount found in normal tissue of the same type. This increased expression

implicates TDE1 as being involved in the cellular transformation from normal to malignant tissue. It is believed TDE1 contributes to oncogenesis by partially protecting cells from serum starvation and etoposide-induced apoptosis. The mechanism through which TDE1 protects cells is poorly understood, but may involve aberrant methylation of TDE1 complexes.

Function:

May be involved in cellular transformation.

Subcellular Location:

Cell membrane; Multi-pass membrane protein.

Tissue Specificity:

Ubiquitous. Expression levels were increased fourfold to tenfold in lung tumor tissues compared with normal pulmonary tissues.

Post-translational modifications:

N-glycosylated.

Similarity:

Belongs to the TDE1 family.

SWISS:

Q13530

Gene ID:

10955

Database links:

[Entrez Gene: 10955](#)Human

[Entrez Gene: 26943](#)Mouse

[Entrez Gene: 296350](#)Rat

[Omim: 607165](#)Human

[SwissProt: Q13530](#)Human

[SwissProt: Q9QZI9](#)Mouse

[Unigene: 272168](#)Human

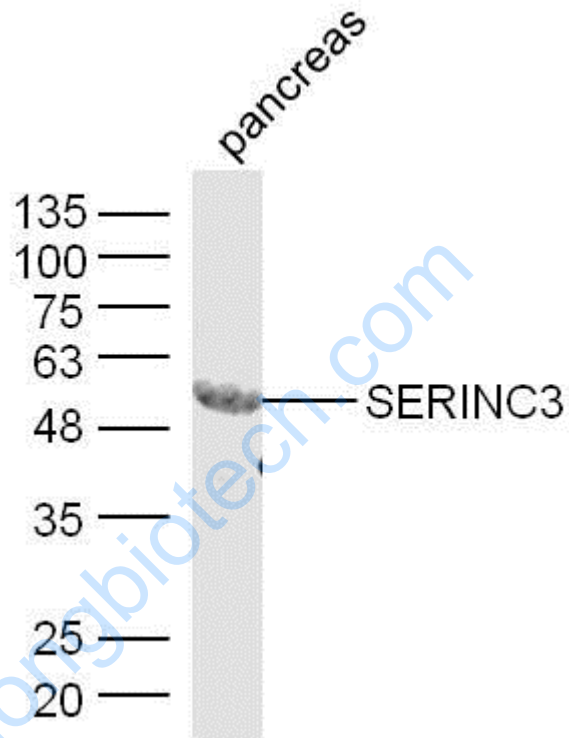
[Unigene: 218473](#)Mouse

[Unigene: 3775](#)Rat

Important Note:

This product as supplied is intended for research use only, not for use in human, therapeutic or diagnostic applications.

Picture:



Sample: Pancreas (Mouse) Lysate at 40 ug

Primary: Anti-SERINC3 (SL5942R) at 1/300 dilution

Secondary: IRDye800CW Goat Anti-Rabbit IgG at 1/20000 dilution

Predicted band size: 53 kD

Observed band size: 53 kD