



Rabbit Anti-CASC5 antibody

SL5959R

Product Name:	CASC5
Chinese Name:	Tumour易感性候选基因5抗体
Alias:	Protein D40/AF15q14; AF15Q14; ALL1 fused gene from chromosome 15q14; Blinkin bub linking kinetochore protein; Cancer susceptibility candidate 5; Cancer susceptibility candidate gene 5 protein; Cancer/testis antigen 29; CT29; D40; hKNL 1; hSpc105; KIAA1570; Kinetochore null 1 homolog; Kinetochore null protein 1; KNL1; CASC5_HUMAN.
Organism Species:	Rabbit
Clonality:	Polyclonal
React Species:	Human,Mouse,Rat,Dog,Cow,Horse,Rabbit,
Applications:	WB=1:500-2000ELISA=1:500-1000IHC-P=1:400-800IHC-F=1:400-800IF=1:100- 500 (Paraffin sections need antigen repair) not yet tested in other applications. optimal dilutions/concentrations should be determined by the end user.
Molecular weight:	265kDa
Cellular localization:	The nucleus
Form:	Lyophilized or Liquid
Concentration:	1mg/ml
immunogen:	KLH conjugated synthetic peptide derived from human CASC5:2251-2342/2342
Lsotype:	IgG
Purification:	affinity purified by Protein A
Storage Buffer:	0.01M TBS(pH7.4) with 1% BSA, 0.03% Proclin300 and 50% Glycerol.
Storage:	Store at -20 °C for one year. Avoid repeated freeze/thaw cycles. The lyophilized antibody is stable at room temperature for at least one month and for greater than a year when kept at -20°C. When reconstituted in sterile pH 7.4 0.01M PBS or diluent of antibody the antibody is stable for at least two weeks at 2-4 °C.
PubMed:	PubMed
Product Detail:	Part of the MIS12 complex, which may be fundamental for kinetochore formation and proper chromosome segregation during mitosis. Four known isoforms exist.

Function:

Performs two crucial functions during mitosis: it is essential for spindle-assembly checkpoint signaling and for correct chromosome alignment. Required for attachment of the kinetochores to the spindle microtubules. Directly links BUB1 and BUB1B to kinetochores. Part of the MIS12 complex, which may be fundamental for kinetochore formation and proper chromosome segregation during mitosis. Acts in coordination with CENPK to recruit the NDC80 complex to the outer kinetochore.

Subunit:

Interacts with DSN1, MIS12, BUB1, BUB1B, NSL1 and ZWINT.

Subcellular Location:

Nucleus. Chromosome, centromere, kinetochore.

Tissue Specificity:

Highly expressed in testis, where it is localized in germ cells, in particular in spermatocytes and in the pre-acrosome of round spermatids. Detected in the acrosome of ejaculated spermatozoa. Detected in adult thymus, bone marrow, colon, small intestine, appendix and placenta, and in fetal liver and thymus.

DISEASE:

Note=A chromosomal aberration involving CASC5 is associated with acute myeloblastic leukemia (AML). Translocation t(11;15)(q23;q14) with MLL/HRX. May give rise to a MLL-CASC5 fusion protein.

SWISS:

Q8NG31

Gene ID:

57082

Database links:

[Entrez Gene: 57082](#)Human

[Entrez Gene: 76464](#)Mouse

[Oimim: 609173](#)Human

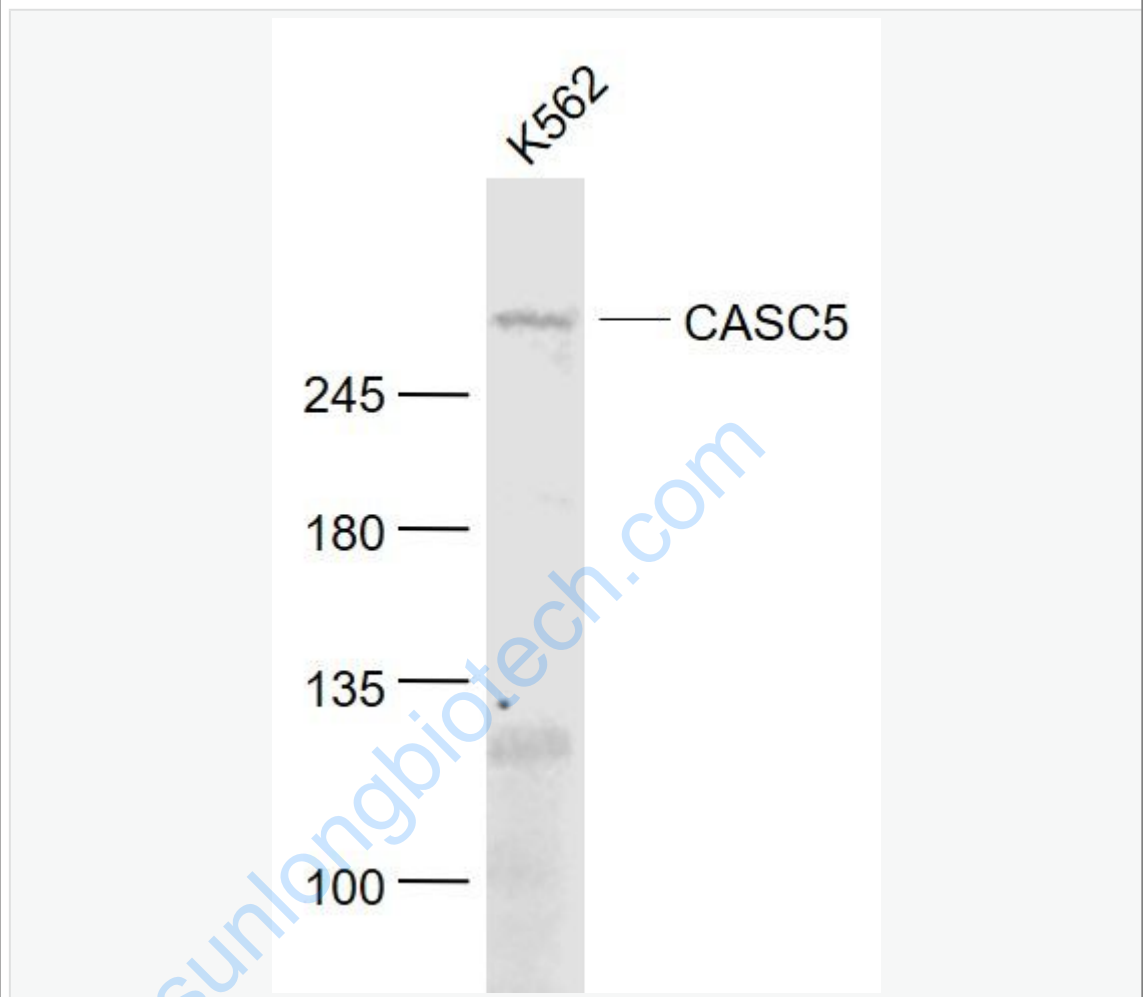
[SwissProt: Q8NG31](#)Human

[SwissProt: Q66JQ7](#)Mouse

Important Note:

This product as supplied is intended for research use only, not for use in human, therapeutic or diagnostic applications.

Picture:



Sample:

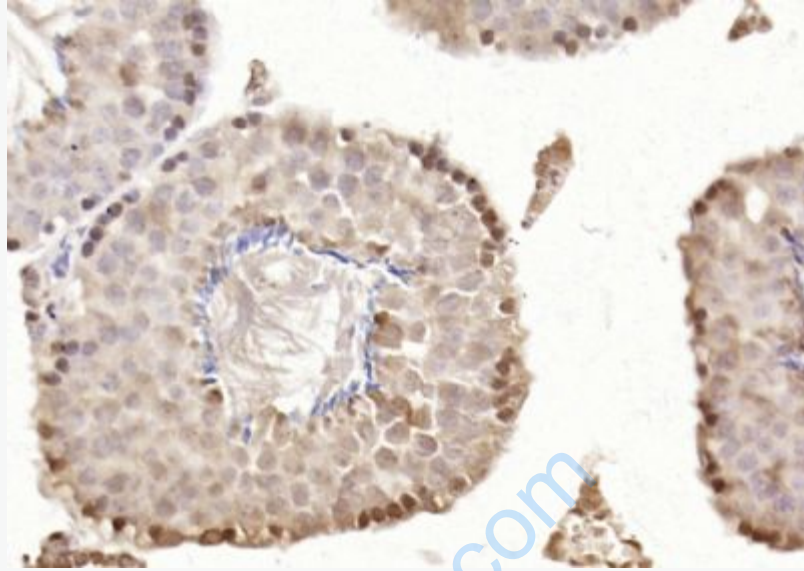
K562(Human) Cell Lysate at 30 ug

Primary: Anti- CASC5 (SL5959R) at 1/1000 dilution

Secondary: IRDye800CW Goat Anti-Rabbit IgG at 1/20000 dilution

Predicted band size: 265 kD

Observed band size: 265 kD



Paraformaldehyde-fixed, paraffin embedded (mouse testis); Antigen retrieval by boiling in sodium citrate buffer (pH6.0) for 15min; Block endogenous peroxidase by 3% hydrogen peroxide for 20 minutes; Blocking buffer (normal goat serum) at 37°C for 30min; Antibody incubation with (CASC5) Polyclonal Antibody, Unconjugated (SL5959R) at 1:400 overnight at 4°C, followed by operating according to SP Kit(Rabbit) (sp-0023) instructions and DAB staining.