



## Rabbit Anti-ASAM antibody

SL6022R

<b>Product Name:</b>	ASAM
<b>Chinese Name:</b>	脂肪细胞特异性粘附分子抗体
<b>Alias:</b>	ACAM; Adipocyte specific adhesion molecule; CAR like membrane protein; CLMP; Cocksackie and adenovirus receptor like membrane protein; CLMP_HUMAN.
<b>Organism Species:</b>	Rabbit
<b>Clonality:</b>	Polyclonal
<b>React Species:</b>	Human,Mouse,Rat,Dog,Cow,Horse,Rabbit,Sheep,
<b>Applications:</b>	WB=1:500-2000ELISA=1:500-1000IHC-P=1:400-800IHC-F=1:400-800ICC=1:100-500IF=1:100-500 (Paraffin sections need antigen repair) not yet tested in other applications. optimal dilutions/concentrations should be determined by the end user.
<b>Molecular weight:</b>	39kDa
<b>Cellular localization:</b>	The cell membrane
<b>Form:</b>	Lyophilized or Liquid
<b>Concentration:</b>	1mg/ml
<b>immunogen:</b>	KLH conjugated synthetic peptide derived from human ASAM/ACAM:15-110/373<Extracellular>
<b>Lsotype:</b>	IgG
<b>Purification:</b>	affinity purified by Protein A
<b>Storage Buffer:</b>	0.01M TBS(pH7.4) with 1% BSA, 0.03% Proclin300 and 50% Glycerol.
<b>Storage:</b>	Store at -20 °C for one year. Avoid repeated freeze/thaw cycles. The lyophilized antibody is stable at room temperature for at least one month and for greater than a year when kept at -20°C. When reconstituted in sterile pH 7.4 0.01M PBS or diluent of antibody the antibody is stable for at least two weeks at 2-4 °C.
<b>PubMed:</b>	<a href="#">PubMed</a>
<b>Product Detail:</b>	The CTX family of proteins, including ASAM, are type I transmembrane proteins within the Ig superfamily that localize to junctional complexes between endothelial and epithelial cells and may play a role in cell-cell adhesion.  <b>Function:</b>

May be involved in the cell-cell adhesion. May play a role in adipocyte differentiation and development of obesity.

**Subunit:**

Cell junction, tight junction. Cell membrane; Single-pass type I membrane protein (Potential).

**Subcellular Location:**

Cell junction, tight junction. Cell membrane; Single-pass type I membrane protein (Potential).

**Tissue Specificity:**

Predominantly expressed in epithelial cells within different tissues and in the white adipose tissue. Expressed at high levels in small intestine and placenta, at intermediate levels in the heart, skeletal muscle, colon, spleen, kidney and lung and at low levels in the liver and peripheral blood leukocytes.

**Similarity:**

Contains 2 Ig-like C2-type (immunoglobulin-like) domains.

**SWISS:**

Q9H6B4

**Gene ID:**

79827

**Database links:**

[Entrez Gene: 79827](#)Human

[Entrez Gene: 71566](#)Mouse

[Entrez Gene: 286939](#)Rat

[Omim: 611693](#)Human

[SwissProt: Q9H6B4](#)Human

[SwissProt: Q8R373](#)Mouse

[SwissProt: Q8K1G0](#)Rat

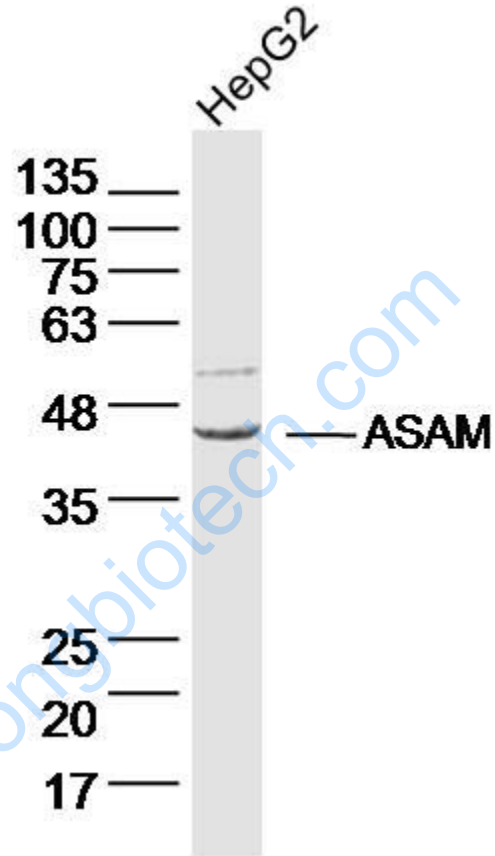
[Unigene: 591949](#)Human

[Unigene: 280560](#)Mouse

[Unigene: 163013](#)Rat

**Important Note:**

This product as supplied is intended for research use only, not for use in human, therapeutic or diagnostic applications.



Picture:

Sample: HepG2 Cell Lysate at 40 ug

Primary: Anti-ASAM (SL6022R) at 1/300 dilution

Secondary: IRDye800CW Goat Anti-Rabbit IgG at 1/20000 dilution

Predicted band size: 39 kD

Observed band size: 44 kD