



## Rabbit Anti-CADM3 antibody

SL6027R

<b>Product Name:</b>	CADM3
<b>Chinese Name:</b>	Cell adhesion molecule3抗体
<b>Alias:</b>	Brain immunoglobulin receptor; Synaptic cell adhesion molecule 3; Necl 1; synCAM3; CADM 3; Cell adhesion molecule 3; FLJ10698; IGSF4B; Immunoglobulin superfamily member 4B; NECL1; Nectin like protein 1; TSLC1 like protein 1; TSLL1; CADM3 HUMAN.
<b>Organism Species:</b>	Rabbit
<b>Clonality:</b>	Polyclonal
<b>React Species:</b>	Human,Mouse,Rat,Dog,Pig,Cow,Horse,Rabbit,
<b>Applications:</b>	WB=1:500-2000ELISA=1:500-1000IHC-P=1:400-800IHC-F=1:400-800ICC=1:100-500IF=1:100-500 (Paraffin sections need antigen repair) not yet tested in other applications. optimal dilutions/concentrations should be determined by the end user.
<b>Molecular weight:</b>	41kDa
<b>Cellular localization:</b>	cytoplasmicThe cell membrane
<b>Form:</b>	Lyophilized or Liquid
<b>Concentration:</b>	1mg/ml
<b>immunogen:</b>	KLH conjugated synthetic peptide derived from human CADM3:101-200/398<Extracellular>
<b>Lsotype:</b>	IgG
<b>Purification:</b>	affinity purified by Protein A
<b>Storage Buffer:</b>	0.01M TBS(pH7.4) with 1% BSA, 0.03% Proclin300 and 50% Glycerol.
<b>Storage:</b>	Store at -20 °C for one year. Avoid repeated freeze/thaw cycles. The lyophilized antibody is stable at room temperature for at least one month and for greater than a year when kept at -20°C. When reconstituted in sterile pH 7.4 0.01M PBS or diluent of antibody the antibody is stable for at least two weeks at 2-4 °C.
<b>PubMed:</b>	<a href="#">PubMed</a>
<b>Product Detail:</b>	Immunoglobulin superfamily member 4B (Cell adhesion molecule 3, Nectin-like protein 1) is a nectin family gene product that contains 2 Ig-like C2-type (immunoglobulin-like) domains and an Ig-like V-type (immunoglobulin-like) domain.

IGSF4B is a single-pass type I membrane protein that localizes to cell-cell interacting sites along the plasma membrane. IGSF4B functions as a cell adhesion molecule at cell-cell junctions. IGSF4B can be found as a homodimer and has a dual calcium-independent adhesion function; a homophilic cell-cell interaction and a heterophilic cell-cell interaction involving IGSF4, Nectin 1 and Nectin 3. IGSF4B may also interact with EPB41L1 which has a potential for regulating structure or function of cell-cell junctions By similarity. Isoform 1 is expressed in adult and fetal brain. Isoform 2 is highly expressed in the cerebellum but is also weakly expressed in placenta. IGSF4B has been found to be markedly over-expressed in glioma cell lines and prostate cancer cell lines.

**Function:**

Involved in the cell-cell adhesion. Has both calcium-independent homophilic cell-cell adhesion activity and calcium-independent heterophilic cell-cell adhesion activity with IGSF4, PVRL1 and PVRL3. Interaction with EPB41L1 may regulate structure or function of cell-cell junctions.

**Subunit:**

Homodimer. Can form trans-heterodimers with PVRL3/nectin-3. Interacts with EPB41L1, DLG3, MPP6 and CASK.

**Subcellular Location:**

Cell junction. Cell membrane. Localized at the cell-cell attached sites of the plasma membrane.

**Tissue Specificity:**

Isoform 1 is expressed mainly in adult and fetal brain. Isoform 2 is highly expressed in adult brain and weakly expressed in placenta. In brain, Isoform 2 is highly expressed in cerebellum.

**Similarity:**

Belongs to the nectin family.

Contains 2 Ig-like C2-type (immunoglobulin-like) domains.

Contains 1 Ig-like V-type (immunoglobulin-like) domain.

**SWISS:**

Q8N126

**Gene ID:**

57863

**Database links:**

[Entrez Gene: 57863](#)Human

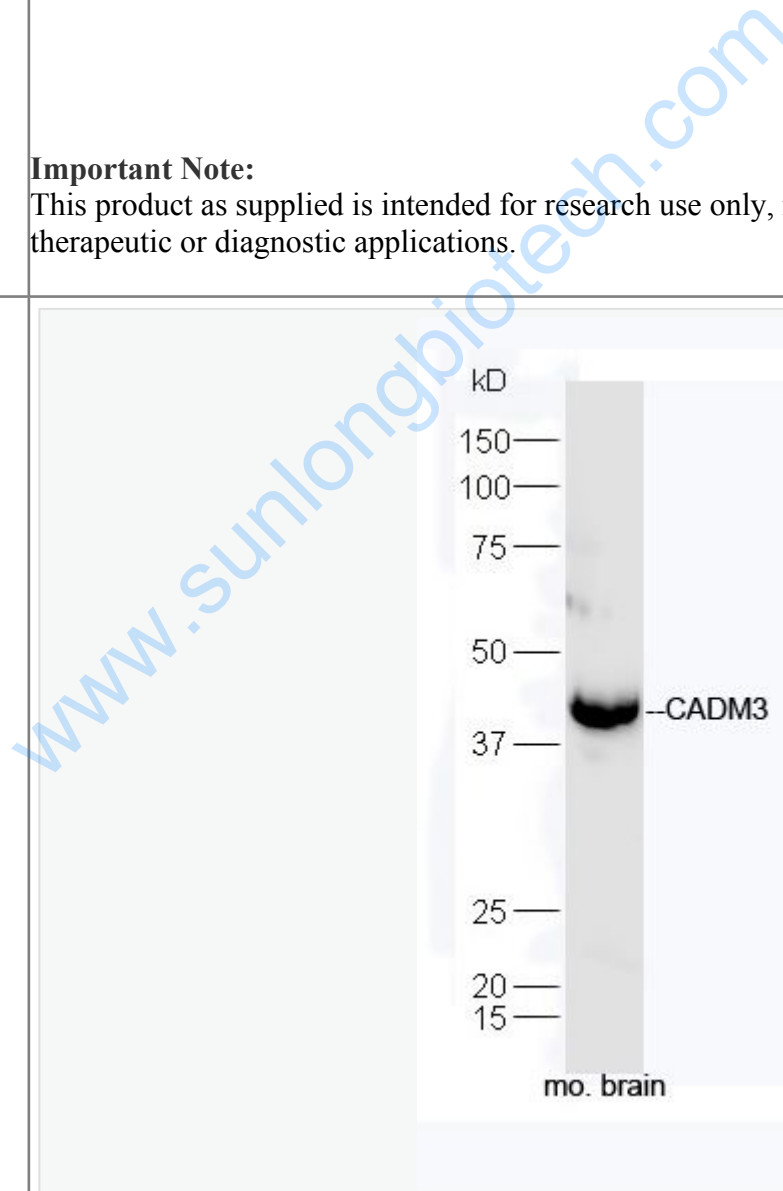
[Entrez Gene: 94332](#)Mouse

[Entrez Gene: 360882](#)Rat  
[Oimim: 609743](#)Human  
[SwissProt: Q8N126](#)Human  
[SwissProt: Q99N28](#)Mouse  
[SwissProt: Q1WIM3](#)Rat  
[Unigene: 365689](#)Human  
[Unigene: 330524](#)Mouse  
[Unigene: 138884](#)Rat

**Important Note:**

This product as supplied is intended for research use only, not for use in human, therapeutic or diagnostic applications.

Picture:



Sample: Brain (Mouse) Lysate at 40 ug

Primary: Anti-CADM3 (SL6027R) at 1/300 dilution

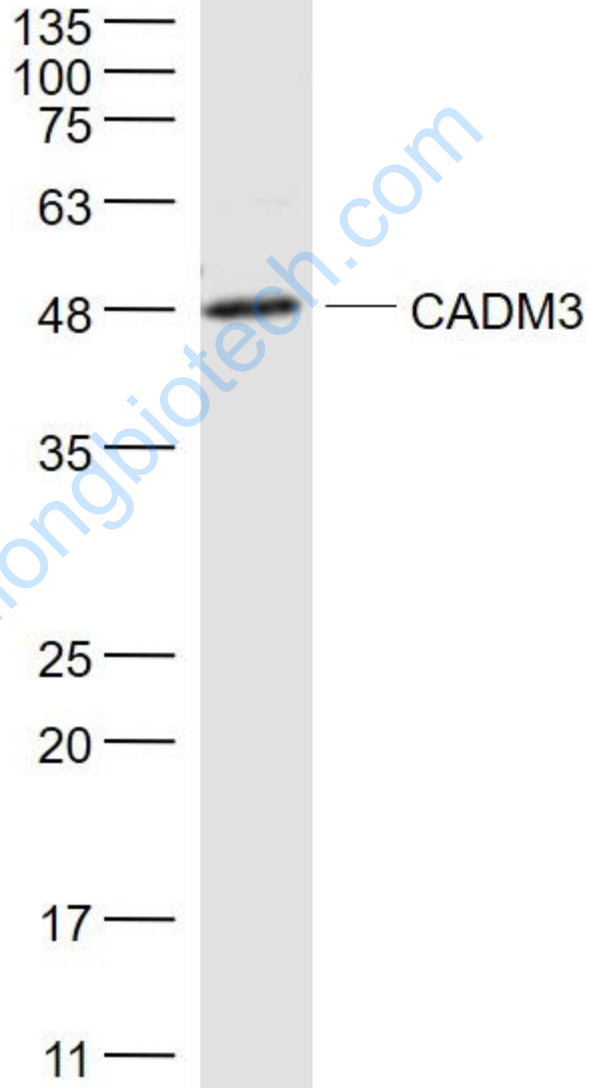
Secondary: HRP conjugated Goat-Anti-rabbit IgG (SL6027R) at 1/5000 dilution

Predicted band size: 41 kD

Observed band size: 41 kD

[www.sunlongbiotech.com](http://www.sunlongbiotech.com)

Hippocampus



Sample:

Hippocampus (Mouse) Lysate at 40 ug

Primary: Anti- CADM3 (SL6027R) at 1/1000 dilution

Secondary: IRDye800CW Goat Anti-Rabbit IgG at 1/20000 dilution

Predicted band size: 41 kD

Observed band size: 48 kD

[www.sunlongbiotech.com](http://www.sunlongbiotech.com)