



## Rabbit Anti-phospho-CD32B (Tyr292) antibody

SL6031R

<b>Product Name:</b>	phospho-CD32B (Tyr292)
<b>Chinese Name:</b>	磷酸化CD32B抗体
<b>Alias:</b>	CD32B(phospho Y292); CD32B; FCGR2B; IGFR2; Lym 1; CD32; CD32 antigen; CDw32; Fc fragment of IgG, low affinity II, receptor for (CD32); Fc fragment of IgG, low affinity IIb, receptor; Fc fragment of IgG, low affinity IIb, receptor (CD32); Fc fragment of IgG, low affinity IIb, receptor for (CD32); Fc fragment of IgG, low affinity IIb, receptor for; Fc gamma receptor IIB; Fc gamma RII; Fc gamma RIIB; Fc-gamma RII; Fc-gamma RII-b; Fc-gamma-RIIb; FCG2; FCG2B_HUMAN; Fcgr2; FCRII; FcRII-b; IgG Fc receptor II beta; IgG Fc receptor II-b; Low affinity immunoglobulin gamma Fc region receptor II; Low affinity immunoglobulin gamma Fc region receptor II-b; Ly-17; Lymphocyte antigen 17.
<b>Organism Species:</b>	Rabbit
<b>Clonality:</b>	Polyclonal
<b>React Species:</b>	Human,Mouse,Rat,Dog,Pig,Rabbit,Sheep,Guinea Pig,
<b>Applications:</b>	WB=1:500-2000ELISA=1:500-1000IHC-P=1:400-800IHC-F=1:400-800ICC=1:100-500IF=1:100-500 (Paraffin sections need antigen repair) not yet tested in other applications. optimal dilutions/concentrations should be determined by the end user.
<b>Molecular weight:</b>	31kDa
<b>Cellular localization:</b>	The cell membrane
<b>Form:</b>	Lyophilized or Liquid
<b>Concentration:</b>	1mg/ml
<b>immunogen:</b>	KLH conjugated Synthesised phosphopeptide derived from human CD32B around the phosphorylation site of Tyr291.:IT(p-Y)SL
<b>Lsotype:</b>	IgG
<b>Purification:</b>	affinity purified by Protein A
<b>Storage Buffer:</b>	0.01M TBS(pH7.4) with 1% BSA, 0.03% Proclin300 and 50% Glycerol.
<b>Storage:</b>	Store at -20 °C for one year. Avoid repeated freeze/thaw cycles. The lyophilized antibody is stable at room temperature for at least one month and for greater than a year

	when kept at -20°C. When reconstituted in sterile pH 7.4 0.01M PBS or diluent of antibody the antibody is stable for at least two weeks at 2-4 °C.
<b>PubMed:</b>	<a href="#">PubMed</a>
<b>Product Detail:</b>	<p>The protein encoded by this gene is a low affinity receptor for the Fc region of immunoglobulin gamma complexes. The encoded protein is involved in the phagocytosis of immune complexes and in the regulation of antibody production by B-cells. Variations in this gene may increase susceptibility to systemic lupus erythematosus (SLE). Several transcript variants encoding different isoforms have been found for this gene. [provided by RefSeq, Jun 2010].</p> <p><b>Function:</b> Binds to the Fc region of immunoglobulins gamma. Low affinity receptor. By binding to IgG it initiates cellular responses against pathogens and soluble antigens. Promotes phagocytosis of opsonized antigens.</p> <p><b>Subunit:</b> Isoform IIB1 interacts with measles virus N protein. N protein is released in the blood following lysis of measles infected cells. This interaction presumably block inflammatory immune response. Interacts with INPP5D/SHIP1. Interacts with FGR. Interacts with LYN.</p> <p><b>Subcellular Location:</b> Cell membrane; Single-pass type I membrane protein.</p> <p><b>Tissue Specificity:</b> Is the most broadly distributed Fc-gamma-receptor. Expressed in monocyte, neutrophils, macrophages, basophils, eosinophils, Langerhans cells, B-cells, platelets cells and placenta (endothelial cells). Not detected in natural killer cells.</p> <p><b>Post-translational modifications:</b> Phosphorylated by SRC-type Tyr-kinases such as LYN, BLK, FYN, HCK and SYK.</p> <p><b>Similarity:</b> Contains 2 Ig-like C2-type (immunoglobulin-like).</p> <p><b>SWISS:</b> P31994</p> <p><b>Gene ID:</b> 2213</p> <p><b>Database links:</b> <a href="#">Entrez Gene: 2213</a>Human <a href="#">Omim: 604590</a>Human</p>

[SwissProt: P31994](#)Human

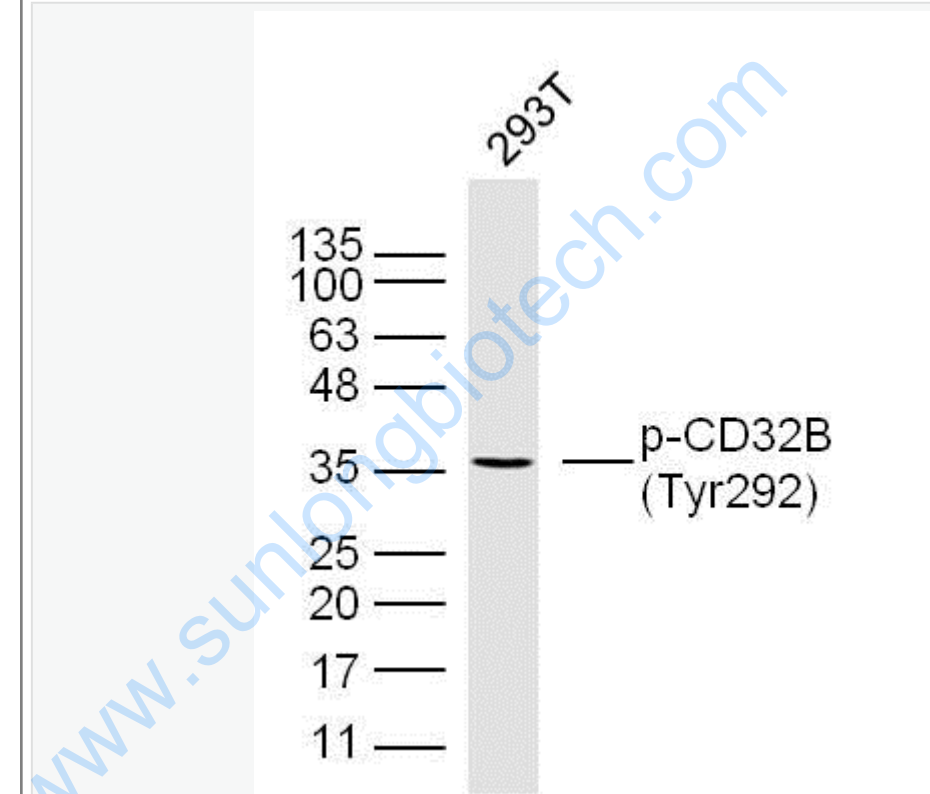
[Unigene: 654395](#)Human

[Unigene: 713617](#)Human

**Important Note:**

This product as supplied is intended for research use only, not for use in human, therapeutic or diagnostic applications.

**Picture:**



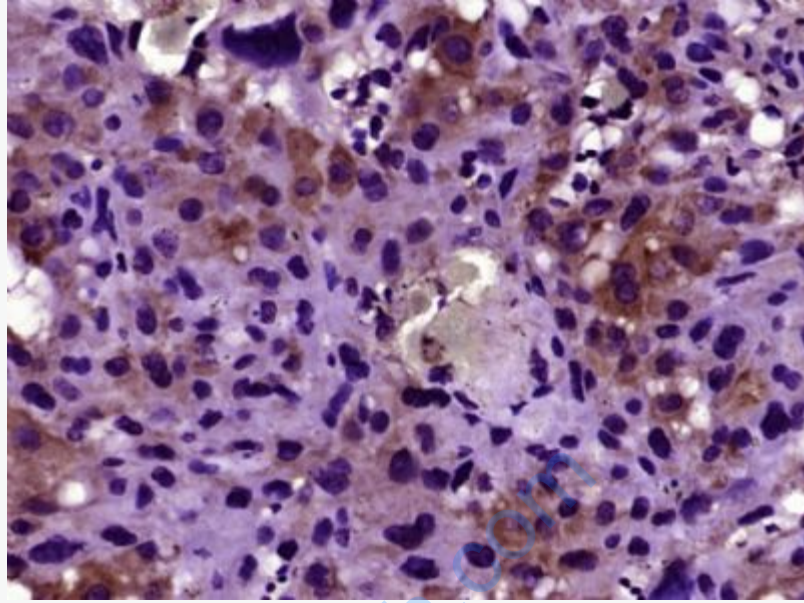
Sample: 293T Cell (Human) Lysate at 40 ug

Primary: Anti-phospho-CD32B(Tyr292) (SL6031R) at 1/300 dilution

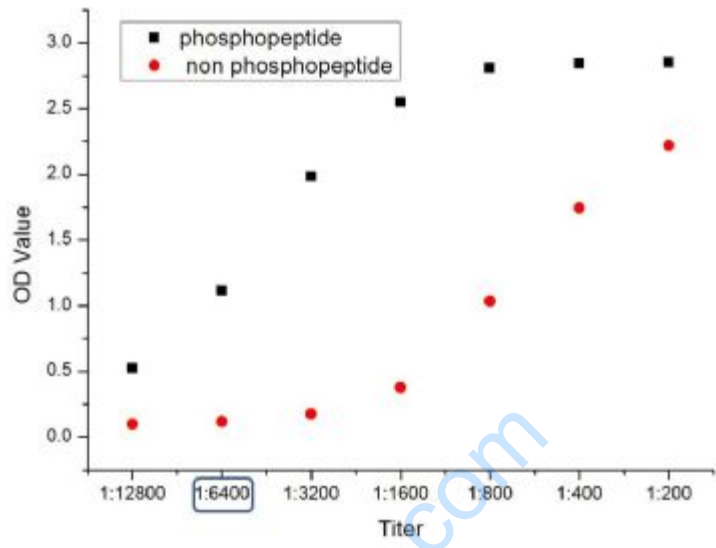
Secondary: IRDye800CW Goat Anti-Rabbit IgG at 1/20000 dilution

Predicted band size: 31 kD

Observed band size: 36 kD



Paraformaldehyde-fixed, paraffin embedded (Mouse placenta); Antigen retrieval by boiling in sodium citrate buffer (pH6.0) for 15min; Block endogenous peroxidase by 3% hydrogen peroxide for 20 minutes; Blocking buffer (normal goat serum) at 37°C for 30min; Antibody incubation with (phospho-CD32B(Tyr292)) Polyclonal Antibody, Unconjugated (SL6031R) at 1:400 overnight at 4°C, followed by operating according to SP Kit(Rabbit) (sp-0023) instructions and DAB staining.



phosphopeptide non phosphopeptide

www.sunlongbiotech.com