



## Rabbit Anti-CPA1 antibody

SL6034R

<b>Product Name:</b>	CPA1
<b>Chinese Name:</b>	胰羧肽酶A1抗体
<b>Alias:</b>	Carboxypeptidase A1 precursor; CPA1; Pancreatic carboxypeptidase A1; Procarboxypeptidase A1 pancreatic; CBPA1_HUMAN.
<b>Organism Species:</b>	Rabbit
<b>Clonality:</b>	Polyclonal
<b>React Species:</b>	Human,Mouse,Rat,Chicken,Dog,Pig,Cow,Horse,Rabbit,Guinea Pig,
<b>Applications:</b>	WB=1:500-2000ELISA=1:500-1000IHC-P=1:400-800IHC-F=1:400-800IF=1:100-500 (Paraffin sections need antigen repair) not yet tested in other applications. optimal dilutions/concentrations should be determined by the end user.
<b>Molecular weight:</b>	35kDa
<b>Cellular localization:</b>	Secretory protein
<b>Form:</b>	Lyophilized or Liquid
<b>Concentration:</b>	1mg/ml
<b>immunogen:</b>	KLH conjugated synthetic peptide derived from human Carboxypeptidase A:201-300/419
<b>Lsotype:</b>	IgG
<b>Purification:</b>	affinity purified by Protein A
<b>Storage Buffer:</b>	0.01M TBS(pH7.4) with 1% BSA, 0.03% Proclin300 and 50% Glycerol.
<b>Storage:</b>	Store at -20 °C for one year. Avoid repeated freeze/thaw cycles. The lyophilized antibody is stable at room temperature for at least one month and for greater than a year when kept at -20°C. When reconstituted in sterile pH 7.4 0.01M PBS or diluent of antibody the antibody is stable for at least two weeks at 2-4 °C.
<b>PubMed:</b>	<a href="#">PubMed</a>
<b>Product Detail:</b>	Three different forms of human pancreatic procarboxypeptidase A have been isolated. This gene encodes a monomeric pancreatic exopeptidase involved in zymogen inhibition. [provided by RefSeq, Jan 2009].  <b>Function:</b>

Carboxypeptidase that catalyzes the release of a C-terminal amino acid, but has little or no action with -Asp, -Glu, -Arg, -Lys or -Pro.

**Subunit:**

Monomer. May form a complex with proelastase 2.

**Subcellular Location:**

Secreted.

**Similarity:**

Belongs to the peptidase M14 family.

**SWISS:**

P15085

**Gene ID:**

1357

**Database links:**

[Entrez Gene: 1357](#)Human

[Entrez Gene: 109697](#)Mouse

[Entrez Gene: 24269](#)Rat

[Oimim: 114850](#)Human

[SwissProt: P15085](#)Human

[SwissProt: Q7TPZ8](#)Mouse

[SwissProt: P00731](#)Rat

[Unigene: 2879](#)Human

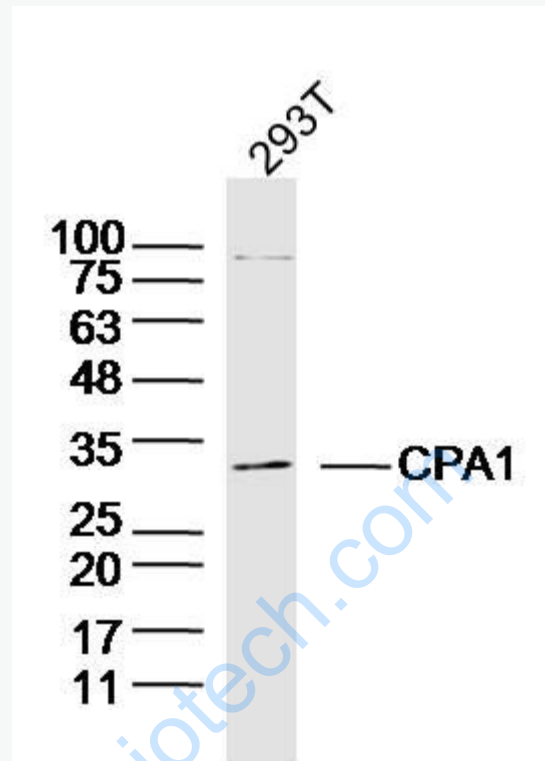
[Unigene: 25377](#)Mouse

[Unigene: 9576](#)Rat

**Important Note:**

This product as supplied is intended for research use only, not for use in human, therapeutic or diagnostic applications.

Picture:



Sample: 293T Cell (Human) Lysate at 40 ug

Primary: Anti-CPA1 (SL6034R) at 1/300 dilution

Secondary: IRDye800CW Goat Anti-Rabbit IgG at 1/20000 dilution

Predicted band size: 35 kD

Observed band size: 34 kD