



Rabbit Anti-Carboxypeptidase B1 antibody

SL6036R

Product Name:	Carboxypeptidase B1
Chinese Name:	胰羧肽酶B1抗体
Alias:	Carboxypeptidase B1; CarboxypeptidaseB; CarboxypeptidaseB1; CP B1; CPB 1; CPB; CPB1; DKFZp779K1333; Pancreas specific protein; Pancreatic carboxypeptidase B1; PASP; PCPB; Procarboxypeptidase B pancreatic; CBPB1_HUMAN.
Organism Species:	Rabbit
Clonality:	Polyclonal
React Species:	Human,Mouse,Rat,Dog,Pig,Horse,Rabbit,
Applications:	WB=1:500-2000ELISA=1:500-1000IHC-P=1:400-800IHC-F=1:400-800IF=1:100-500 (Paraffin sections need antigen repair) not yet tested in other applications. optimal dilutions/concentrations should be determined by the end user.
Molecular weight:	47kDa
Cellular localization:	Secretory protein
Form:	Lyophilized or Liquid
Concentration:	1mg/ml
immunogen:	KLH conjugated synthetic peptide derived from human Carboxypeptidase B1:251-350/417
Lsotype:	IgG
Purification:	affinity purified by Protein A
Storage Buffer:	0.01M TBS(pH7.4) with 1% BSA, 0.03% Proclin300 and 50% Glycerol.
Storage:	Store at -20 °C for one year. Avoid repeated freeze/thaw cycles. The lyophilized antibody is stable at room temperature for at least one month and for greater than a year when kept at -20°C. When reconstituted in sterile pH 7.4 0.01M PBS or diluent of antibody the antibody is stable for at least two weeks at 2-4 °C.
PubMed:	PubMed
Product Detail:	Carboxypeptidase catalyzes the hydrolysis of the basic amino acids lysine, arginine and ornithine from the C terminal position in polypeptides. It occurs as a zymogen in the pancreas in most vertebrates.

Subcellular Location:

Secreted.

Tissue Specificity:

Pancreas.

Similarity:

Belongs to the peptidase M14 family.

SWISS:

P15086

Gene ID:

1360

Database links:

[Entrez Gene: 1360](#)Human

[Entrez Gene: 403512](#)Dog

[Entrez Gene: 397341](#)Pig

[Oimim: 114852](#)Human

[SwissProt: P55261](#)Dog

[SwissProt: P15086](#)Human

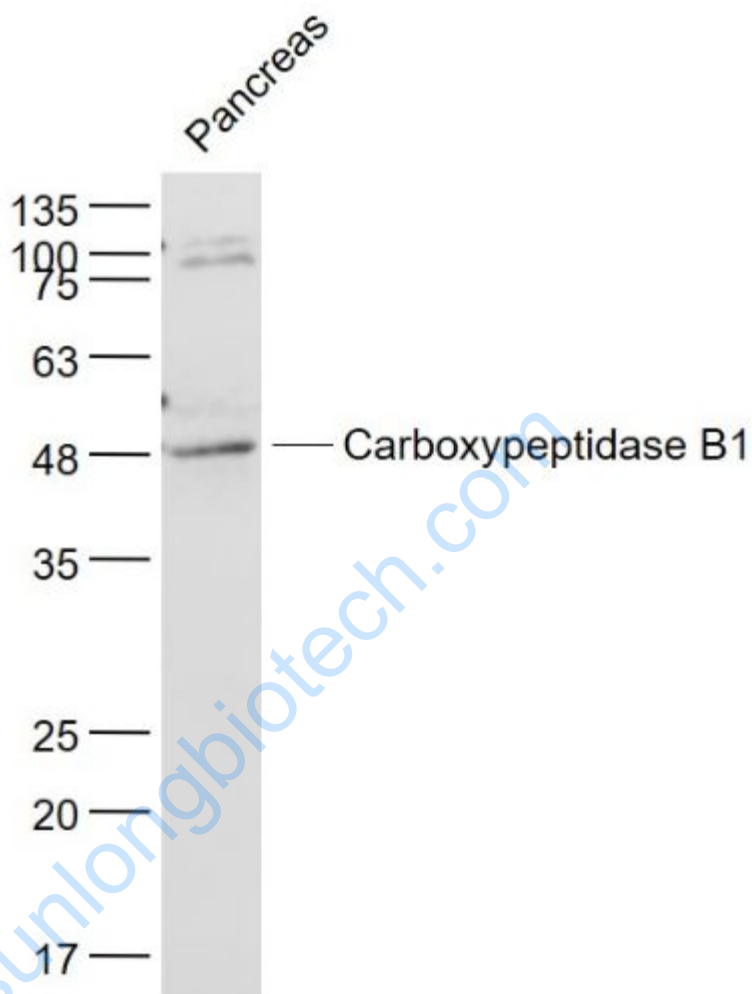
[SwissProt: P09955](#)Pig

[Unigene: 477891](#)Human

Important Note:

This product as supplied is intended for research use only, not for use in human, therapeutic or diagnostic applications.

Picture:



Sample:

Pancreas (Mouse) Lysate at 40 ug

Primary: Anti- Carboxypeptidase B1 (SL6036R) at 1/1000 dilution

Secondary: IRDye800CW Goat Anti-Rabbit IgG at 1/20000 dilution

Predicted band size: 47 kD

Observed band size: 48 kD