



## Rabbit Anti-Delta 4 antibody

SL6044R

<b>Product Name:</b>	Delta 4
<b>Chinese Name:</b>	Notch信号通路Delta样配体4抗体
<b>Alias:</b>	Delta 4; delta 4 precursor; Delta-4: Delta ligand 4; delta ligand 4 precursor; Delta like 4; Delta like 4 homolog; Delta like 4 protein; Delta like protein 4; Delta-like 4 (Drosophila); Delta-like protein 4; Delta4; DLL 4; DLL4; DLL4_HUMAN antibody Drosophila Delta homolog 4; hdelta2; Homeobox protein DLL-4; MGC126344; Notch ligand delta 2; Notch ligand DLL4; notch ligand DLL4 precursor; XDLL-4.
<b>Organism Species:</b>	Rabbit
<b>Clonality:</b>	Polyclonal
<b>React Species:</b>	Human,Mouse,Rat,Dog,Pig,Cow,Horse,
<b>Applications:</b>	ELISA=1:500-1000IHC-P=1:400-800IHC-F=1:400-800IF=1:100-500 (Paraffin sections need antigen repair) not yet tested in other applications. optimal dilutions/concentrations should be determined by the end user.
<b>Molecular weight:</b>	72kDa
<b>Cellular localization:</b>	The cell membrane
<b>Form:</b>	Lyophilized or Liquid
<b>Concentration:</b>	1mg/ml
<b>immunogen:</b>	KLH conjugated synthetic peptide derived from human DLL4:551-650/685
<b>Lsotype:</b>	IgG
<b>Purification:</b>	affinity purified by Protein A
<b>Storage Buffer:</b>	0.01M TBS(pH7.4) with 1% BSA, 0.03% Proclin300 and 50% Glycerol.
<b>Storage:</b>	Store at -20 °C for one year. Avoid repeated freeze/thaw cycles. The lyophilized antibody is stable at room temperature for at least one month and for greater than a year when kept at -20°C. When reconstituted in sterile pH 7.4 0.01M PBS or diluent of antibody the antibody is stable for at least two weeks at 2-4 °C.
<b>PubMed:</b>	<a href="#">PubMed</a>
<b>Product Detail:</b>	The LIN-12/Notch family of transmembrane receptors is believed to play a central role in development by regulating cell fate decisions. Notch proteins have been found to be overexpressed or rearranged in human tumors. Ligands for Notch include Jagged,

Jagged-2 and Delta. While blocking the differentiation of progenitor cells into the B-cell lineage, Delta promotes the emergence of a population of cells with T cell/NK-cell characteristics. The protein is a membrane protein expressed in heart, pancreas, brain and muscle during gastrulation and early organogenesis and in adult heart and lung. Delta-4 is a membrane protein that activates Notch-1 and Notch-4. It is expressed in a wide range of adult and fetal tissues, especially in vascular endothelium.

**Function:**

Plays a role in the Notch signaling pathway. Activates Notch-1 and Notch-4.

**Subunit:**

Binds to Notch-1 and Notch-4 (By similarity).

**Subcellular Location:**

Membrane; Single-pass type I membrane protein (Probable).

**Tissue Specificity:**

Expressed in vascular endothelium.

**Post-translational modifications:**

Ubiquitinated by MIB (MIB1 or MIB2), leading to its endocytosis and subsequent degradation.

**Similarity:**

Contains 1 DSL domain.

Contains 8 EGF-like domains.

**SWISS:**

Q9NR61

**Gene ID:**

54567

**Database links:**

[Entrez Gene: 54567](#)Human

[Entrez Gene: 54485](#)Mouse

[Omin: 605185](#)Human

[SwissProt: Q9NR61](#)Human

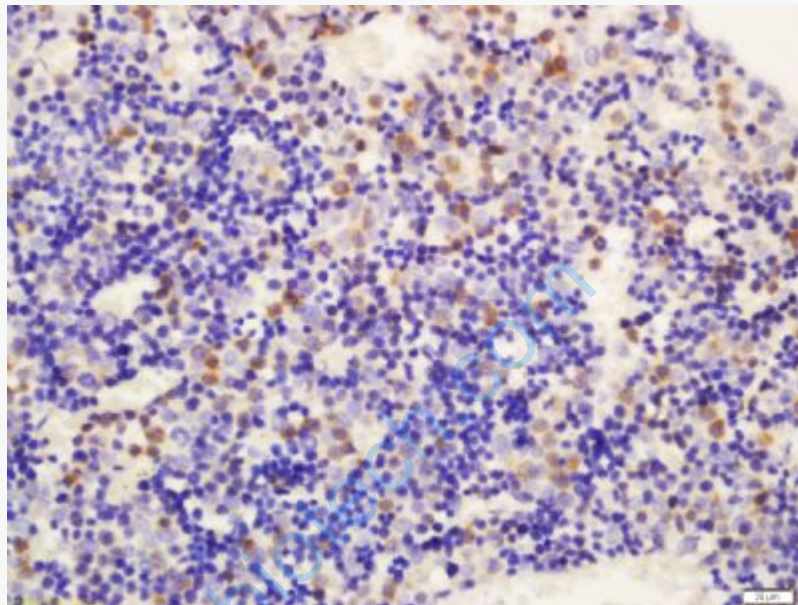
[SwissProt: Q9JI71](#)Mouse

[Unigene: 511076](#)Human

[Unigene: 143719](#)Mouse

**Important Note:**

This product as supplied is intended for research use only, not for use in human, therapeutic or diagnostic applications.



**Picture:**

Tissue/cell: mouse embryo tissue; 4% Paraformaldehyde-fixed and paraffin-embedded;

Antigen retrieval: citrate buffer ( 0.01M, pH 6.0 ), Boiling bathing for 15min; Block endogenous peroxidase by 3% Hydrogen peroxide for 30min; Blocking buffer (normal goat serum,C-0005) at 37°C for 20 min;

Incubation: Anti-Delta 4 Polyclonal Antibody, Unconjugated(SL6044R) 1:200, overnight at 4°C, followed by conjugation to the secondary antibody(SP-0023) and DAB(C-0010) staining