



## Rabbit Anti-phospho-LLGL1 + LLGL2 (Ser650+Ser654) antibody

SL6070R

<b>Product Name:</b>	phospho-LLGL1 + LLGL2 (Ser650+Ser654)
<b>Chinese Name:</b>	磷酸化相似Tumour抑制基因HUGL抗体
<b>Alias:</b>	LLGL1 + LLGL2 (phospho S650 + S654); LLGL1 + LLGL2 (phospho Ser650 + Ser654); p-LLGL1 + p-LLGL2 (S650 + S654); p-LLGL1/LLGL2 (Ser650 + Ser654); p-LLGL1/LLGL2 (S650 + S654); p-LLGL1/LLGL2 (Ser650/654); DLG4; HGL; HUGL; HUGL1; lethal giant larvae homolog 1; lethal giant larvae homolog 2; Lethal(2) giant larvae protein homolog 1; Lethal(2) giant larvae protein homolog 2; LGL2; LLGL; L2GL1 HUMAN; L2GL2 HUMAN.
<b>Organism Species:</b>	Rabbit
<b>Clonality:</b>	Polyclonal
<b>React Species:</b>	Human,Mouse,Rat,Chicken,Dog,Pig,Cow,Horse,Guinea Pig,k
<b>Applications:</b>	ELISA=1:500-1000 not yet tested in other applications. optimal dilutions/concentrations should be determined by the end user.
<b>Molecular weight:</b>	117kDa
<b>Cellular localization:</b>	cytoplasmicThe cell membrane
<b>Form:</b>	Lyophilized or Liquid
<b>Concentration:</b>	1mg/ml
<b>immunogen:</b>	KLH conjugated synthesised phosphopeptide derived from mouse LLGL1 around the phosphorylation site of Ser650+Ser654:PL(p-S)RVK(p-S)
<b>Lsotype:</b>	IgG
<b>Purification:</b>	affinity purified by Protein A
<b>Storage Buffer:</b>	0.01M TBS(pH7.4) with 1% BSA, 0.03% Proclin300 and 50% Glycerol.
<b>Storage:</b>	Store at -20 °C for one year. Avoid repeated freeze/thaw cycles. The lyophilized antibody is stable at room temperature for at least one month and for greater than a year when kept at -20°C. When reconstituted in sterile pH 7.4 0.01M PBS or diluent of antibody the antibody is stable for at least two weeks at 2-4 °C.

**PubMed:**[PubMed](#)

LLGL1 is a protein that is similar to a tumor suppressor in *Drosophila*. The protein is part of a cytoskeletal network and is associated with nonmuscle myosin II heavy chain and a kinase that specifically phosphorylates this protein at serine residues. The gene for LLGL1 is located within the Smith-Magenis syndrome region on chromosome 17. LLGL2 is a protein similar to lethal giant larvae of *Drosophila*. In fly, the protein's ability to localize cell fate determinants is regulated by the atypical protein kinase C (aPKC). In human, this protein interacts with aPKC-containing complexes and is cortically localized in mitotic cells.

**Function:**

Cortical cytoskeleton protein found in a complex involved in maintaining cell polarity and epithelial integrity. Involved in the regulation of mitotic spindle orientation, proliferation, differentiation and tissue organization of neuroepithelial cells.

**Subunit:**

Associated with nonmuscle myosin II heavy chain. Interacts with PRKCI/aPKC, PARD6B/Par-6 and PARD6A. Interacts with STX4A.

**Subcellular Location:**

Cytoplasm, cytoskeleton. Note=Localized to the lateral membrane during the polarization and formation cell-cell contacts.

**Product Detail:****Tissue Specificity:**

Expressed in brain, kidney, and muscle but is barely seen in heart and placenta. Down-regulated or lost in all cell lines and in most of the tumor samples analyzed. Loss was associated with advanced stage of the disease.

**Post-translational modifications:**

Phosphorylated upon DNA damage, probably by ATM or ATR. Phosphorylated at least at Ser-663 by PRKCI.

**Similarity:**

Belongs to the WD repeat L(2)GL family.  
Contains 14 WD repeats.

**SWISS:**

Q15334

**Gene ID:**

3996

**Database links:**

[Entrez Gene: 3996](#) Human

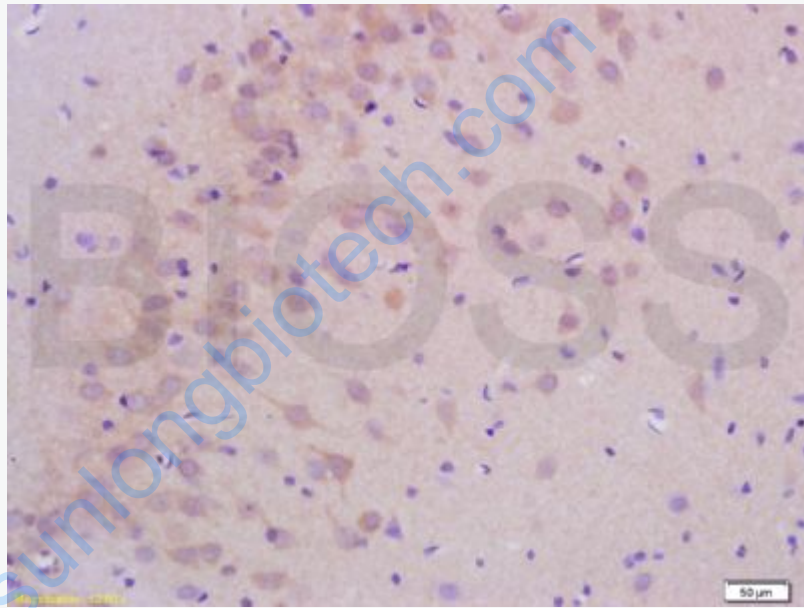
[Omin: 600966](#) Human

[SwissProt: Q15334](#) Human

[Unigene: 513983](#) Human

**Important Note:**

This product as supplied is intended for research use only, not for use in human, therapeutic or diagnostic applications.



**Picture:**

Tissue/cell: rat brain tissue; 4% Paraformaldehyde-fixed and paraffin-embedded;

Antigen retrieval: citrate buffer ( 0.01M, pH 6.0 ), Boiling bathing for 15min; Block endogenous peroxidase by 3% Hydrogen peroxide for 30min; Blocking buffer (normal goat serum,C-0005) at 37°C for 20 min;

Incubation: Anti-phospho-LLGL1+LLGL2(Ser650+Ser654) Polyclonal Antibody, Unconjugated (SL6070R) 1:200, overnight at 4°C, followed by conjugation to the secondary antibody(SP-0023) and DAB(C-0010) staining