



Rabbit Anti-MFSD2A antibody

SL6073R

Product Name:	MFSD2A
Chinese Name:	促进调解蛋白家族2A抗体
Alias:	Major facilitator superfamily domain containing 2; Major facilitator superfamily domain containing 2A; Major facilitator superfamily domain-containing protein 2A; MFS2A_HUMAN; MFSD2; MFSD2A.
Organism Species:	Rabbit
Clonality:	Polyclonal
React Species:	Human,Mouse,Rat,Chicken,Dog,Pig,Cow,Horse,Rabbit,
Applications:	WB=1:500-2000ELISA=1:500-1000IHC-P=1:400-800IHC-F=1:400-800Flow-Cyt=0.2ug/testIF=1:100-500 (Paraffin sections need antigen repair) not yet tested in other applications. optimal dilutions/concentrations should be determined by the end user.
Molecular weight:	60kDa
Cellular localization:	cytoplasmicThe cell membrane
Form:	Lyophilized or Liquid
Concentration:	1mg/ml
immunogen:	KLH conjugated synthetic peptide derived from human MFSD2A:331-430/543
Lsotype:	IgG
Purification:	affinity purified by Protein A
Storage Buffer:	0.01M TBS(pH7.4) with 1% BSA, 0.03% Proclin300 and 50% Glycerol.
Storage:	Store at -20 °C for one year. Avoid repeated freeze/thaw cycles. The lyophilized antibody is stable at room temperature for at least one month and for greater than a year when kept at -20°C. When reconstituted in sterile pH 7.4 0.01M PBS or diluent of antibody the antibody is stable for at least two weeks at 2-4 °C.
PubMed:	PubMed
Product Detail:	MFSD2 is a 543 amino acid multi-pass membrane protein of the endoplasmic reticulum that is involved in beta-adrenergic signaling during thermogenesis. Existing as three alternatively spliced isoforms, MFSD2 plays a role in G1 regulation and is encoded by a gene that maps to human chromosome 1p34.2. Human chromosome 1 spans 260 million base pairs, contains over 3,000 genes, comprises nearly 8% of the human genome and

houses a large number of disease-associated genes, including those that are involved in familial adenomatous polyposis, Stickler syndrome, Parkinson's disease, Gaucher disease, schizophrenia and Usher syndrome.

Function:

Play a role in thermogenesis via beta-adrenergic signaling pathway.

Subcellular Location:

Endoplasmic reticulum membrane.

Tissue Specificity:

Similarity:

Belongs to the major facilitator superfamily.

SWISS:

Q8NA29

Gene ID:

84879

Database links:

[Entrez Gene: 84879](#)Human

[Entrez Gene: 76574](#)Mouse

[Entrez Gene: 298504](#)Rat

[Oimim: 614397](#)Human

[SwissProt: Q8NA29](#)Human

[SwissProt: Q9DA75](#)Mouse

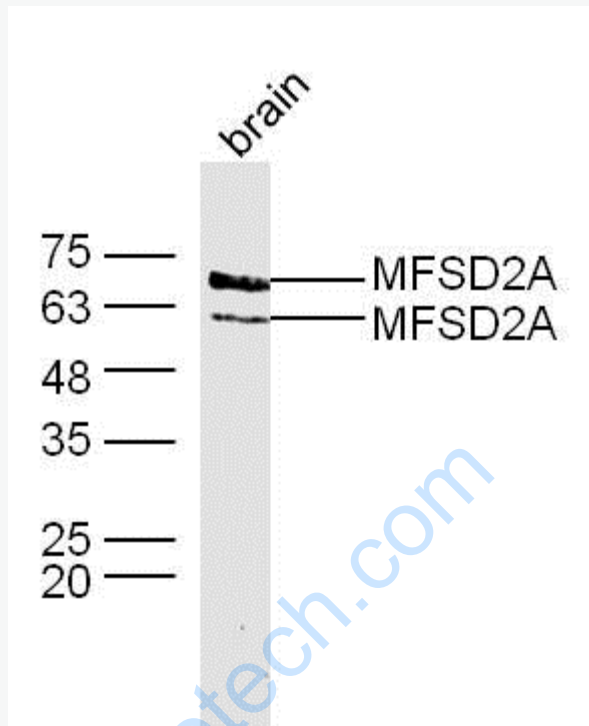
[Unigene: 655177](#)Human

[Unigene: 331842](#)Mouse

Important Note:

This product as supplied is intended for research use only, not for use in human, therapeutic or diagnostic applications.

Picture:



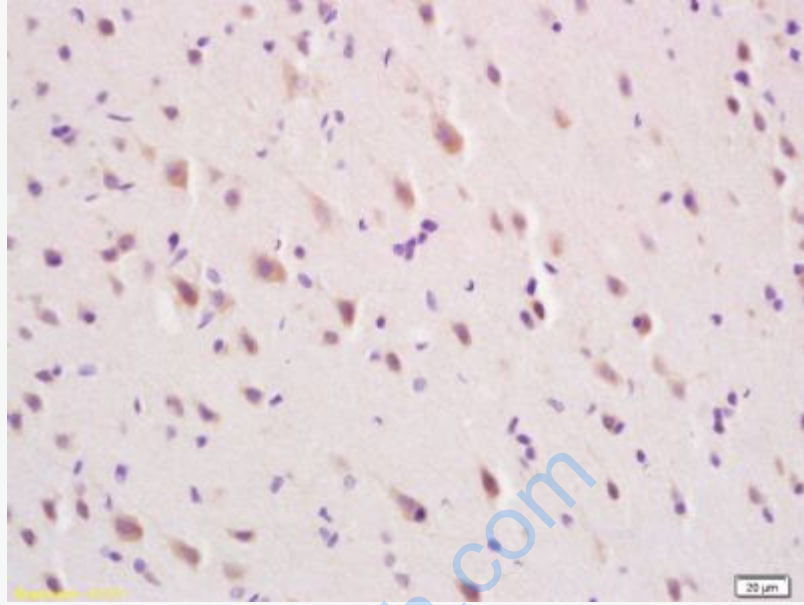
Sample: Brain (Mouse) Lysate at 40 ug

Primary: Anti-MFSD2A (SL6073R) at 1/300 dilution

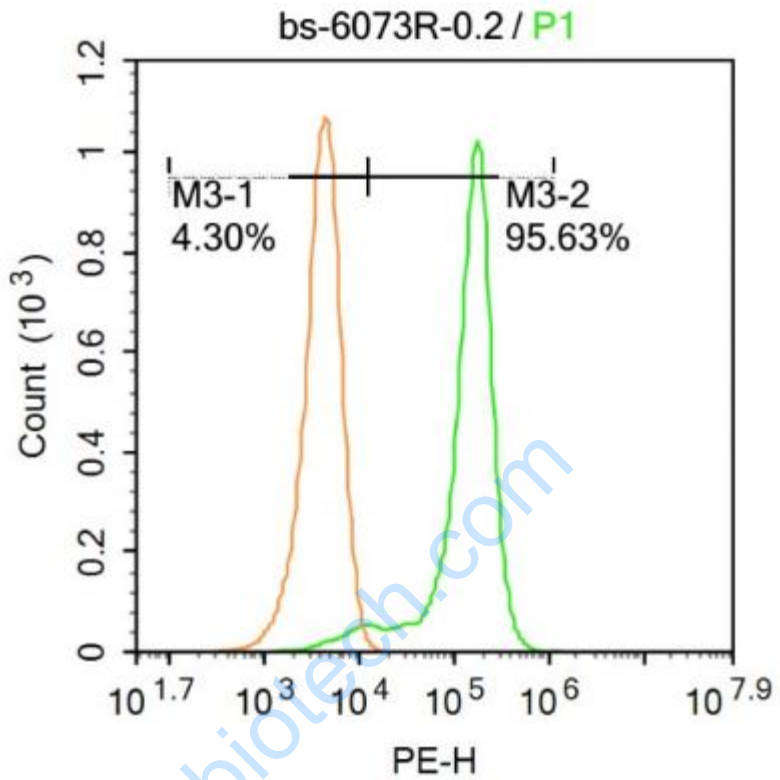
Secondary: IRDye800CW Goat Anti-Rabbit IgG at 1/20000 dilution

Predicted band size: 60 kD

Observed band size: 60/65 kD



Tissue/cell: rat brain tissue; 4% Paraformaldehyde-fixed and paraffin-embedded;
Antigen retrieval: citrate buffer (0.01M, pH 6.0), Boiling bathing for 15min; Block endogenous peroxidase by 3% Hydrogen peroxide for 30min; Blocking buffer (normal goat serum,C-0005) at 37°C for 20 min;
Incubation: Anti-MFS2A Polyclonal Antibody, Unconjugated(SL6073R) 1:200, overnight at 4°C, followed by conjugation to the secondary antibody(SP-0023) and DAB(C-0010) staining



Blank control: Molt-4.

Primary Antibody (green line): Rabbit Anti-MFSD2A antibody (SL6073R)

Dilution: 0.2 μ g / 10⁶ cells;

Isotype Control Antibody (orange line): Rabbit IgG .

Secondary Antibody : Goat anti-rabbit IgG-PE

Dilution: 0.2 μ g /test.

Protocol

The cells were fixed with 4% PFA (10min at room temperature) and then permeabilized with 20% PBST for 20 min at -20°C. The cells were then incubated in 5% BSA to block non-specific protein-protein interactions for 30 min at room temperature. Cells stained with Primary Antibody for 30 min at room temperature.

	<p>The secondary antibody used for 40 min at room temperature. Acquisition of 20,000 events was performed.</p>
--	--

www.sunlongbiotech.com