



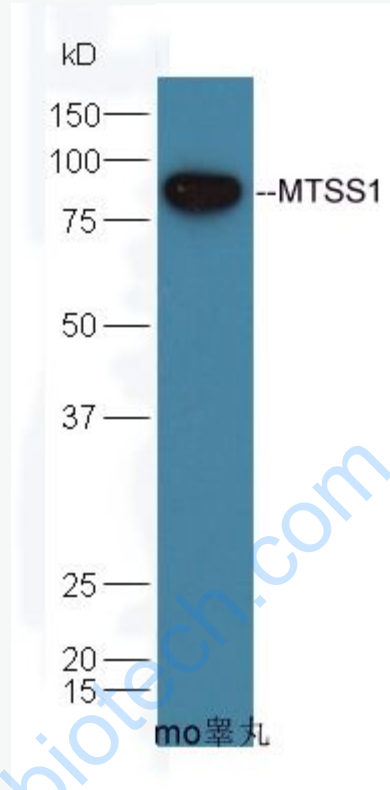
Rabbit Anti-MTSS1 antibody

SL6075R

| | |
|--------------------------------|--|
| Product Name: | MTSS1 |
| Chinese Name: | Tumour转移抑制蛋白1 |
| Alias: | metastasis suppressor 1; Metastasis suppressor protein 1; Metastasis suppressor YGL 1; MIM; MIMA; MIMB; missing in metastasis; Missing in metastasis protein; MTSS 1; MTSS1 HUMAN. |
| 文献引用 PubMed : | Specific References(1) SL6075R has been referenced in 1 publications. [IF=2.91] Chen, Qiang, et al. "Microarray analyses reveal liver metastasis-related genes in metastatic colorectal cancer cell model." Journal of cancer research and clinical oncology (2013): 1-10. WB;Human. PubMed:23563852 |
| Organism Species: | Rabbit |
| Clonality: | Polyclonal |
| React Species: | Human,Mouse,Rat,Chicken,Dog,Cow,Horse,Rabbit, |
| Applications: | WB=1:500-2000ELISA=1:500-1000IHC-P=1:400-800IHC-F=1:400-800IF=1:100-500 (Paraffin sections need antigen repair) not yet tested in other applications. optimal dilutions/concentrations should be determined by the end user. |
| Molecular weight: | 82kDa |
| Cellular localization: | cytoplasmic |
| Form: | Lyophilized or Liquid |
| Concentration: | 1mg/ml |
| immunogen: | KLH conjugated synthetic peptide derived from human MTSS1:101-200/755 |
| Lsotype: | IgG |
| Purification: | affinity purified by Protein A |
| Storage Buffer: | 0.01M TBS(pH7.4) with 1% BSA, 0.03% Proclin300 and 50% Glycerol. |
| Storage: | Store at -20 °C for one year. Avoid repeated freeze/thaw cycles. The lyophilized antibody is stable at room temperature for at least one month and for greater than a year |

| | |
|------------------------|--|
| | when kept at -20°C. When reconstituted in sterile pH 7.4 0.01M PBS or diluent of antibody the antibody is stable for at least two weeks at 2-4 °C. |
| PubMed: | PubMed |
| Product Detail: | <p>May be related to cancer progression or tumor metastasis in a variety of organ sites, most likely through an interaction with the actin cytoskeleton.</p> <p>Function: May be related to cancer progression or tumor metastasis in a variety of organ sites, most likely through an interaction with the actin cytoskeleton.</p> <p>Subunit: Binds to actin. Binds to the cytoplasmic domain of receptor protein tyrosine phosphatase delta.</p> <p>Subcellular Location: Cytoplasm, cytoskeleton.</p> <p>Tissue Specificity: Expressed in many tissues, including spleen, thymus, prostate, testis, uterus, colon, and peripheral blood.</p> <p>SWISS: O43312</p> <p>Gene ID: 9788</p> <p>Database links: Entrez Gene: 9788Human Entrez Gene: 211401Mouse Entrez Gene: 362918Rat Oimim: 608486Human SwissProt: O43312Human SwissProt: Q8R1S4Mouse</p> <p>Important Note: This product as supplied is intended for research use only, not for use in human, therapeutic or diagnostic applications.</p> |

Picture:



Sample: Testis (Mouse) Lysate at 40 ug

Primary: Anti-MTSS1 (SL6075R) at 1/300 dilution

Secondary: HRP conjugated Goat-Anti-rabbit IgG (SL6075R) at 1/5000 dilution

Predicted band size: 82 kD

Observed band size: 82 kD