



## Rabbit Anti-LUCA15 antibody

SL6090R

<b>Product Name:</b>	LUCA15
<b>Chinese Name:</b>	Tumour抑制基因LUCA15抗体
<b>Alias:</b>	G15 antibody H37 antibody LUCA 15; LUCA15; Protein G15; RBM 5; Renal carcinoma antigen NY REN 9; RMB 5; RMB5; RNA binding motif protein 5; RNA binding protein 5; Tumor suppressor LUCA15; RBM5 HUMAN.
<b>Organism Species:</b>	Rabbit
<b>Clonality:</b>	Polyclonal
<b>React Species:</b>	Human,Mouse,Rat,Dog,Pig,Cow,Horse,Rabbit,
<b>Applications:</b>	WB=1:500-2000ELISA=1:500-1000IHC-P=1:400-800IHC-F=1:400-800IF=1:100-500 (Paraffin sections need antigen repair) not yet tested in other applications. optimal dilutions/concentrations should be determined by the end user.
<b>Molecular weight:</b>	92kDa
<b>Cellular localization:</b>	The nucleus
<b>Form:</b>	Lyophilized or Liquid
<b>Concentration:</b>	1mg/ml
<b>immunogen:</b>	KLH conjugated synthetic peptide derived from human RBM5/LUCA15:731-815/815
<b>Lsotype:</b>	IgG
<b>Purification:</b>	affinity purified by Protein A
<b>Storage Buffer:</b>	0.01M TBS(pH7.4) with 1% BSA, 0.03% Proclin300 and 50% Glycerol.
<b>Storage:</b>	Store at -20 °C for one year. Avoid repeated freeze/thaw cycles. The lyophilized antibody is stable at room temperature for at least one month and for greater than a year when kept at -20°C. When reconstituted in sterile pH 7.4 0.01M PBS or diluent of antibody the antibody is stable for at least two weeks at 2-4 °C.
<b>PubMed:</b>	<a href="#">PubMed</a>
<b>Product Detail:</b>	RBM5 (RNA binding motif protein 5) is a nuclear SR related RNA binding protein which specifically binds poly(G) RNA homopolymers in vitro. It modulates both apoptosis and the cell cycle, and retards tumor formation.
	<b>Subunit:</b>

Component of the spliceosome A complex (also known as the prespliceosome). Appears to dissociate from the spliceosome upon formation of the spliceosome B complex (also known as the pre-catalytic spliceosome), in which the heterotrimeric U4/U6.U5 snRNPs are bound. Interacts with U2AF2; this interaction is direct. Also interacts with ACIN1, PRPF8, SFRS3, SNRPB, SNRPN, SNRNP70 and SNRNP200; these interactions may be indirect.

**Subcellular Location:**

Nuclear.

**Tissue Specificity:**

Isoform 5 is widely expressed in normal tissues and is expressed at increased levels in T-leukemic cell lines.

**Similarity:**

Belongs to the RBM5/RBM10 family.

Contains 1 C2H2-type zinc finger.

Contains 1 G-patch domain.

Contains 1 RanBP2-type zinc finger.

Contains 2 RRM (RNA recognition motif) domains.

**SWISS:**

P52756

**Gene ID:**

10181

**Database links:**

[Entrez Gene: 10181](#)Human

[Entrez Gene: 83486](#)Mouse

[Entrez Gene: 300996](#)Rat

[Omim: 606884](#)Human

[SwissProt: Q1RMU5](#)Cow

[SwissProt: P52756](#)Human

[SwissProt: Q91YE7](#)Mouse

[SwissProt: B2GV05](#)Rat

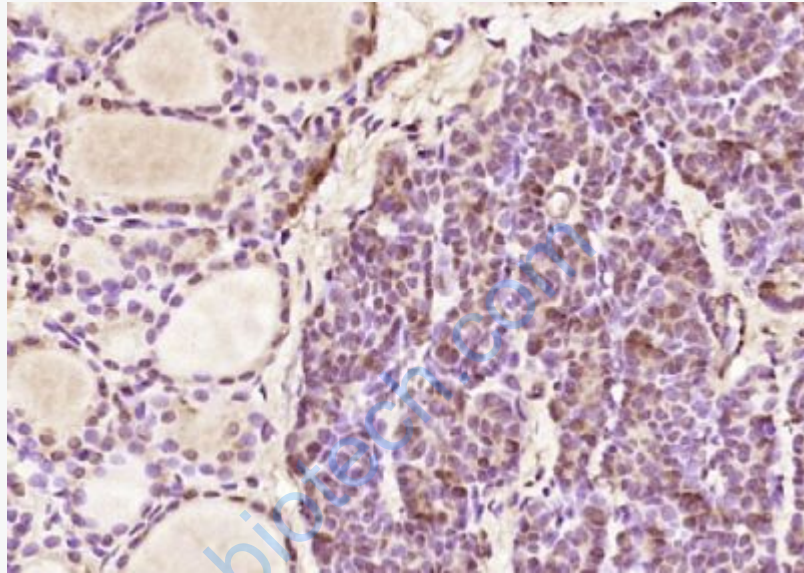
[Unigene: 439480](#)Human

[Unigene: 259197](#)Mouse

[Unigene: 17033](#)Rat

**Important Note:**

This product as supplied is intended for research use only, not for use in human, therapeutic or diagnostic applications.



**Picture:**

Paraformaldehyde-fixed, paraffin embedded (rat thyroid gland); Antigen retrieval by boiling in sodium citrate buffer (pH6.0) for 15min; Block endogenous peroxidase by 3% hydrogen peroxide for 20 minutes; Blocking buffer (normal goat serum) at 37°C for 30min; Antibody incubation with (LUCA15) Polyclonal Antibody, Unconjugated (SL6090R) at 1:200 overnight at 4°C, followed by operating according to SP Kit(Rabbit) (sp-0023) instructions and DAB staining.