



Rabbit Anti-RERG antibody

SL6091R

Product Name:	RERG
Chinese Name:	Ras相关雌激素调节生长抑制蛋白
Alias:	RAS like estrogen regulated growth inhibitor; Ras related and estrogen regulated growth inhibitor; Ras-related and estrogen-regulated growth inhibitor; Rerg; RERG_HUMAN; Weakly similar to N ras protein.
Organism Species:	Rabbit
Clonality:	Polyclonal
React Species:	Human,Mouse,Rat,Chicken,Dog,Cow,Rabbit,Sheep,
Applications:	WB=1:500-2000ELISA=1:500-1000IHC-P=1:400-800IHC-F=1:400-800IF=1:100-500 (Paraffin sections need antigen repair) not yet tested in other applications. optimal dilutions/concentrations should be determined by the end user.
Molecular weight:	22kDa
Cellular localization:	cytoplasmic
Form:	Lyophilized or Liquid
Concentration:	1mg/ml
immunogen:	KLH conjugated synthetic peptide derived from human RERG:101-199/199
Lsotype:	IgG
Purification:	affinity purified by Protein A
Storage Buffer:	0.01M TBS(pH7.4) with 1% BSA, 0.03% Proclin300 and 50% Glycerol.
Storage:	Store at -20 °C for one year. Avoid repeated freeze/thaw cycles. The lyophilized antibody is stable at room temperature for at least one month and for greater than a year when kept at -20°C. When reconstituted in sterile pH 7.4 0.01M PBS or diluent of antibody the antibody is stable for at least two weeks at 2-4 °C.
PubMed:	PubMed
Product Detail:	RERG, a member of the RAS superfamily of GTPases, inhibits cell proliferation and tumor formation Function: Binds GDP/GTP and possesses intrinsic GTPase activity. Has higher affinity for GDP

than for GTP. In cell lines overexpression leads to a reduction in the rate of proliferation, colony formation and in tumorigenic potential.

Subcellular Location:

Cytoplasm.

Tissue Specificity:

Detected in heart, brain, placenta, lung, liver, skin, kidney and pancreas. Detected in estrogen receptor-positive breast-derived cell lines, but not in estrogen receptor-negative cell lines. Expression is decreased or lost in a significant proportion of primary breast tumors with poor clinical prognosis.

Similarity:

Belongs to the small GTPase superfamily. Ras family.

SWISS:

Q96A58

Gene ID:

85004

Database links:

[Entrez Gene: 85004](#)Human

[Entrez Gene: 232441](#)Mouse

[Entrez Gene: 502916](#)Rat

[Omim: 612664](#)Human

[SwissProt: Q0VCJ7](#)Cow

[SwissProt: Q96A58](#)Human

[SwissProt: Q8R367](#)Mouse

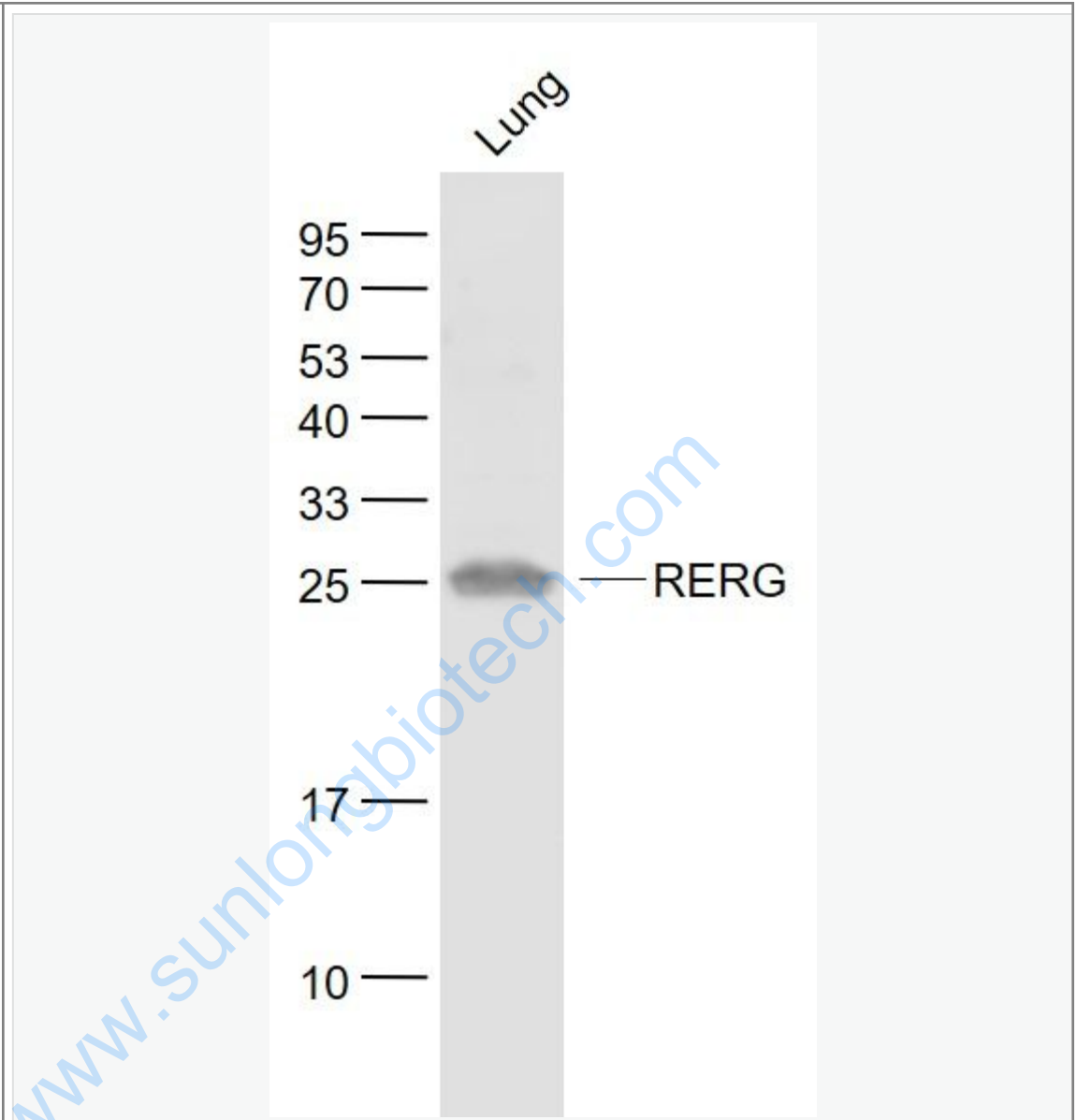
[Unigene: 199487](#)Human

[Unigene: 46233](#)Mouse

Important Note:

This product as supplied is intended for research use only, not for use in human, therapeutic or diagnostic applications.

Picture:



Sample:

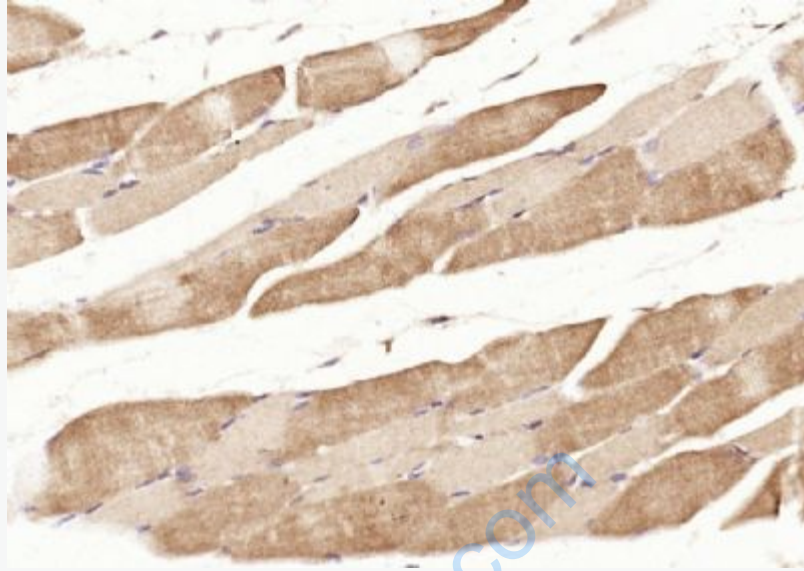
Lung (Mouse) Lysate at 40 ug

Primary: Anti- RERG (SL6091R) at 1/1000 dilution

Secondary: IRDye800CW Goat Anti-Rabbit IgG at 1/20000 dilution

Predicted band size: 22 kD

Observed band size: 25 kD



Paraformaldehyde-fixed, paraffin embedded (rat skeletal muscle); Antigen retrieval by boiling in sodium citrate buffer (pH6.0) for 15min; Block endogenous peroxidase by 3% hydrogen peroxide for 20 minutes; Blocking buffer (normal goat serum) at 37°C for 30min; Antibody incubation with (RERG) Polyclonal Antibody, Unconjugated (SL6091R) at 1:200 overnight at 4°C, followed by operating according to SP Kit(Rabbit) (sp-0023) instructions and DAB staining.

www.sunngbiotech.com