



Rabbit Anti-RND3 antibody

SL6095R

Product Name:	RND3
Chinese Name:	Rho家族GTP酶3抗体
Alias:	ARHE; memB; Rho family GTPase 3; Rho8; RhoE; RND3_HUMAN.
Organism Species:	Rabbit
Clonality:	Polyclonal
React Species:	Human,Mouse,Rat,Chicken,Dog,Pig,Cow,Horse,Rabbit,
Applications:	ELISA=1:500-1000IHC-P=1:400-800IHC-F=1:400-800IF=1:100-500 (Paraffin sections need antigen repair) not yet tested in other applications. optimal dilutions/concentrations should be determined by the end user.
Molecular weight:	27kDa
Cellular localization:	cytoplasmicThe cell membrane
Form:	Lyophilized or Liquid
Concentration:	1mg/ml
immunogen:	KLH conjugated synthetic peptide derived from human RND3:51-150/244
Lsotype:	IgG
Purification:	affinity purified by Protein A
Storage Buffer:	0.01M TBS(pH7.4) with 1% BSA, 0.03% Proclin300 and 50% Glycerol.
Storage:	Store at -20 °C for one year. Avoid repeated freeze/thaw cycles. The lyophilized antibody is stable at room temperature for at least one month and for greater than a year when kept at -20°C. When reconstituted in sterile pH 7.4 0.01M PBS or diluent of antibody the antibody is stable for at least two weeks at 2-4 °C.
PubMed:	PubMed
Product Detail:	The Rho family of proteins mediates cytoskeleton organization and cell motility responses. This family contains twenty different members divided into five groups, the Rho-like, Rac-like, Cdc42-like, Rnd and RhoBTB subfamilies. Rho proteins have GTPase activity and bind GTP in their active form and GDP in their inactive form. In their active form they interact with downstream proteins. However, the Rnd subfamily of proteins containing the Rnd1, Rnd2 and RhoE(Rnd3), binds GTP but not GDP and has no GTPase activity. While Rho proteins are required for stress fibre formation in

cultured fibroblasts, epithelial and endothelial cells, overexpression of Rnd3 or Rnd1 in the same cells may cause an opposite effect (i.e. decrease in stress fibre). Thus, the Rnd3 protein may act as an antagonist for the Rho proteins either by directly binding to Rho or to other downstream proteins.

Subunit:

Binds ROCK1 (By similarity). Interacts with UBXD5.

Subcellular Location:

Golgi Apparatus; Golgi apparatus membrane; peripheral membrane protein.

Tissue Specificity:

Ubiquitous.

Similarity:

Belongs to the small GTPase superfamily. Rho family.

SWISS:

P61587

Gene ID:

390

Database links:

[Entrez Gene: 390](#)Human

[Entrez Gene: 74194](#)Mouse

[Entrez Gene: 397559](#)Pig

[Entrez Gene: 295588](#)Rat

[Omim: 602924](#)Human

[SwissProt: P61587](#)Human

[SwissProt: P61588](#)Mouse

[SwissProt: O77683](#)Pig

[SwissProt: Q6SA80](#)Rat

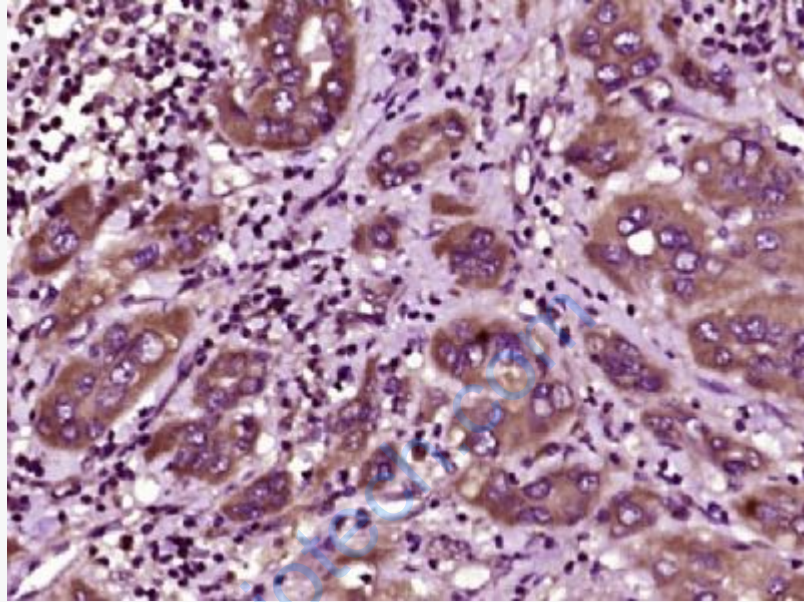
[Unigene: 6838](#)Human

[Unigene: 46497](#)Mouse

[Unigene: 25153](#)Rat

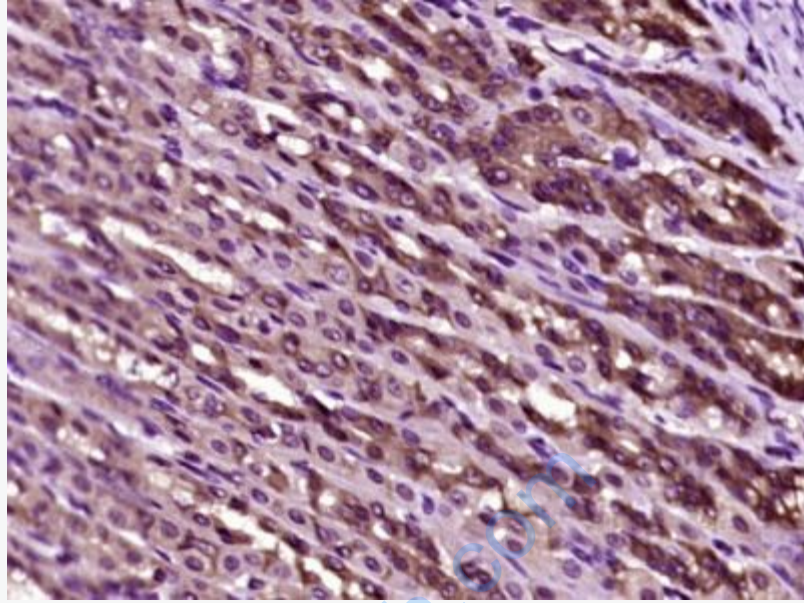
Important Note:

This product as supplied is intended for research use only, not for use in human, therapeutic or diagnostic applications.



Picture:

Paraformaldehyde-fixed, paraffin embedded (human liver carcinoma); Antigen retrieval by boiling in sodium citrate buffer (pH6.0) for 15min; Block endogenous peroxidase by 3% hydrogen peroxide for 20 minutes; Blocking buffer (normal goat serum) at 37°C for 30min; Antibody incubation with (RND3) Polyclonal Antibody, Unconjugated (SL6095R) at 1:400 overnight at 4°C, followed by operating according to SP Kit(Rabbit) (sp-0023) instructions and DAB staining.



Paraformaldehyde-fixed, paraffin embedded (rat stomach tissue); Antigen retrieval by boiling in sodium citrate buffer (pH6.0) for 15min; Block endogenous peroxidase by 3% hydrogen peroxide for 20 minutes; Blocking buffer (normal goat serum) at 37°C for 30min; Antibody incubation with (RND3) Polyclonal Antibody, Unconjugated (SL6095R) at 1:400 overnight at 4°C, followed by operating according to SP Kit(Rabbit) (sp-0023) instructions and DAB staining.