



Rabbit Anti-RSRC2 antibody

SL6097R

Product Name:	RSRC2
Chinese Name:	食道癌抑制生长蛋白抗体
Alias:	1500011J06Rik; arginine/serine-rich coiled-coil 2; FLJ11021; RSRC2_HUMAN.
Organism Species:	Rabbit
Clonality:	Polyclonal
React Species:	Human,Mouse,Rat,Chicken,Dog,Pig,Cow,Horse,
Applications:	WB=1:500-2000ELISA=1:500-1000IHC-P=1:400-800IHC-F=1:400-800IF=1:100-500 (Paraffin sections need antigen repair) not yet tested in other applications. optimal dilutions/concentrations should be determined by the end user.
Molecular weight:	50 kDa
Cellular localization:	The nucleuscytoplasmic
Form:	Lyophilized or Liquid
Concentration:	1mg/ml
immunogen:	KLH conjugated synthetic peptide derived from human RSRC2:351-434/434
Lsotype:	IgG
Purification:	affinity purified by Protein A
Storage Buffer:	0.01M TBS(pH7.4) with 1% BSA, 0.03% Proclin300 and 50% Glycerol.
Storage:	Store at -20 °C for one year. Avoid repeated freeze/thaw cycles. The lyophilized antibody is stable at room temperature for at least one month and for greater than a year when kept at -20°C. When reconstituted in sterile pH 7.4 0.01M PBS or diluent of antibody the antibody is stable for at least two weeks at 2-4 °C.
PubMed:	PubMed
Product Detail:	RSRC2 (arginine/serine-rich coiled-coil 2) possibly plays a role in cell proliferation and may be a novel tumor suppressor of esophageal cancer cell growth. Similarity: Belongs to the RSRC2 family. SWISS:

Q7L4I2

Gene ID:
65117

Database links:

[Entrez Gene: 65117](#)Human

[Entrez Gene: 208606](#)Mouse

[Entrez Gene: 360807](#)Rat

[SwissProt: Q7L4I2](#)Human

[SwissProt: A2RTL5](#)Mouse

[SwissProt: Q5PQR4](#)Rat

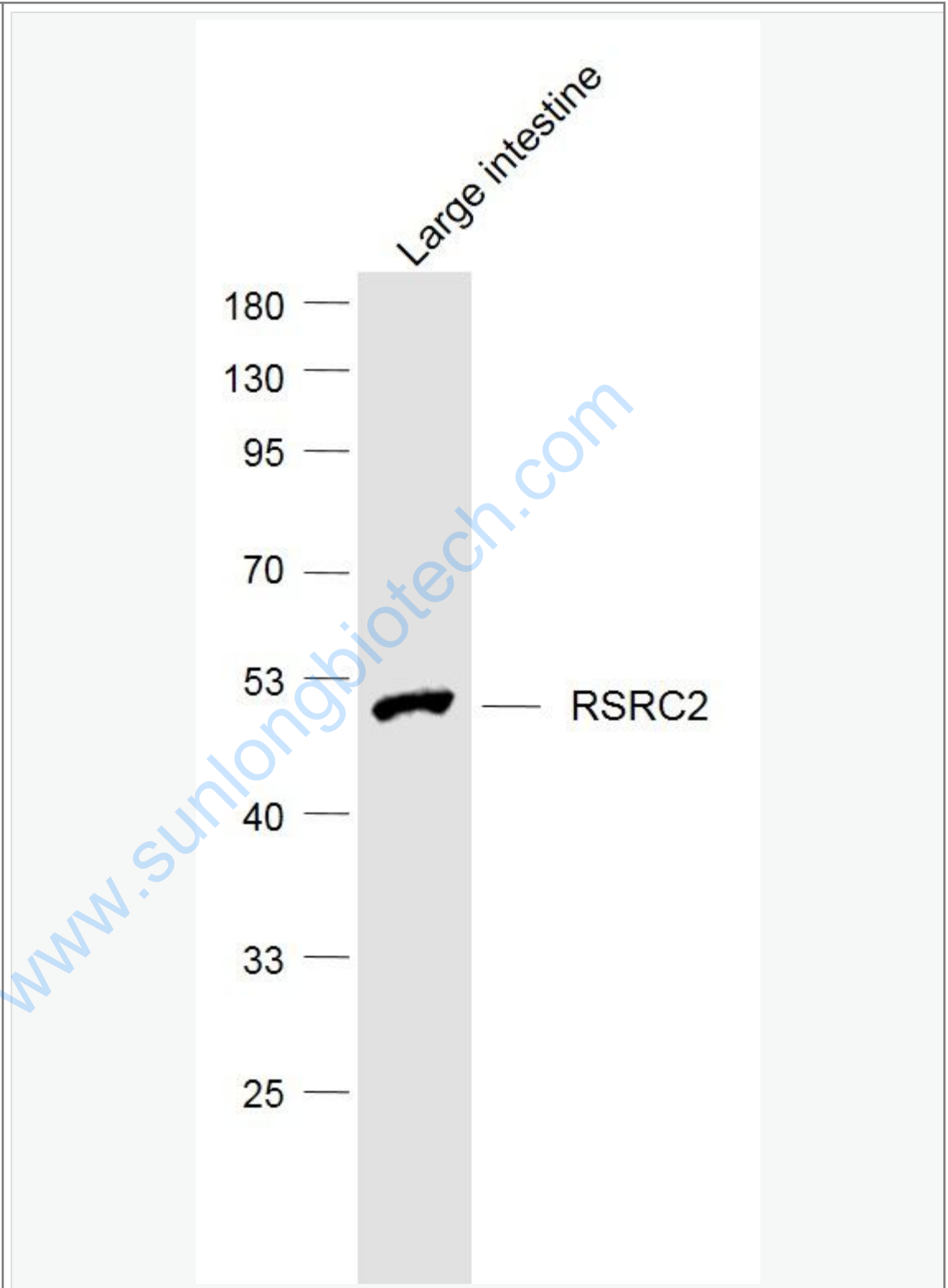
[Unigene: 432996](#)Human

Important Note:

This product as supplied is intended for research use only, not for use in human, therapeutic or diagnostic applications.

www.sunlongbiotech.com

Picture:



Sample:

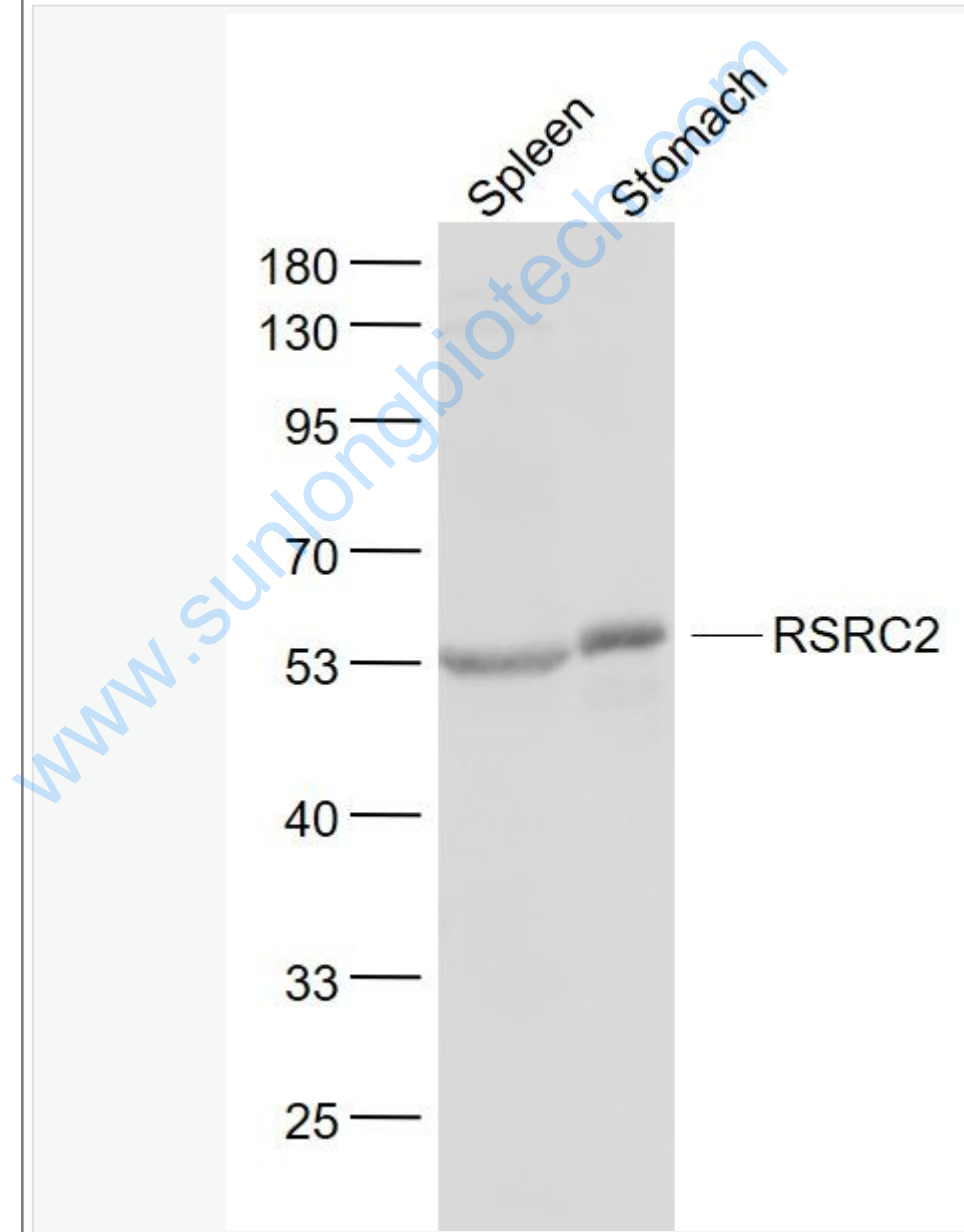
Large intestine (Mouse) Lysate at 40 ug

Primary: Anti-RSRC2 (SL6097R) at 1/1000 dilution

Secondary: IRDye800CW Goat Anti-Rabbit IgG at 1/20000 dilution

Predicted band size: 50 kD

Observed band size: 50 kD



Sample:

Spleen (Mouse) Lysate at 40 ug

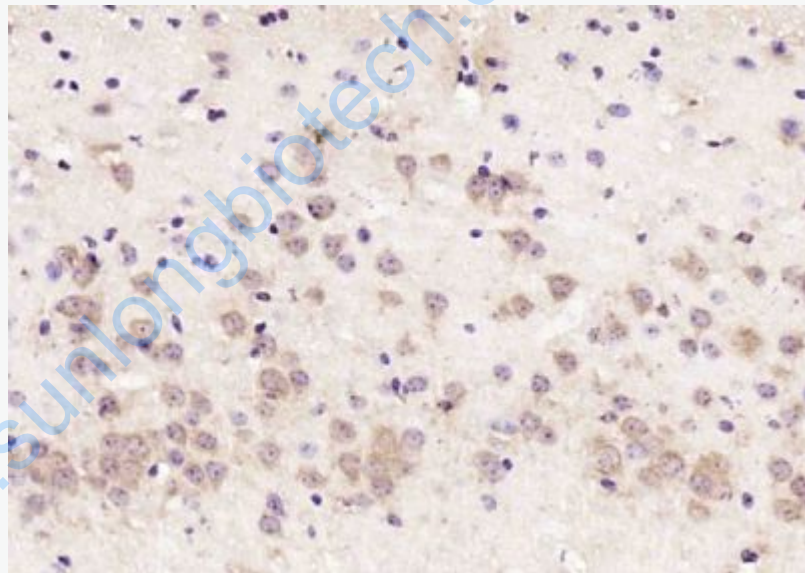
Stomach (Mouse) Lysate at 40 ug

Primary: Anti- RSRC2 (SL6097R) at 1/1000 dilution

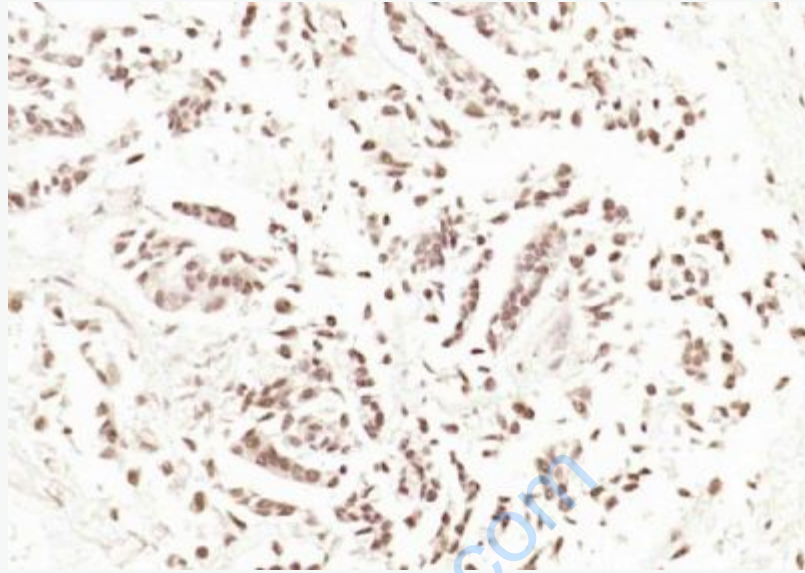
Secondary: IRDye800CW Goat Anti-Rabbit IgG at 1/20000 dilution

Predicted band size: 50 kD

Observed band size: 52 kD



Paraformaldehyde-fixed, paraffin embedded (mouse brain); Antigen retrieval by boiling in sodium citrate buffer (pH6.0) for 15min; Block endogenous peroxidase by 3% hydrogen peroxide for 20 minutes; Blocking buffer (normal goat serum) at 37°C for 30min; Antibody incubation with (RSRC2) Polyclonal Antibody, Unconjugated (SL6097R) at 1:200 overnight at 4°C, followed by operating according to SP Kit(Rabbit) (sp-0023) instructions and DAB staining.



Paraformaldehyde-fixed, paraffin embedded (human gastric carcinoma); Antigen retrieval by boiling in sodium citrate buffer (pH6.0) for 15min; Block endogenous peroxidase by 3% hydrogen peroxide for 20 minutes; Blocking buffer (normal goat serum) at 37°C for 30min; Antibody incubation with (RSRC2) Polyclonal Antibody, Unconjugated (SL6097R) at 1:200 overnight at 4°C, followed by operating according to SP Kit(Rabbit) (sp-0023) instructions and DAB staining.