



Rabbit Anti-RUNX1T1 antibody

SL6101R

Product Name:	RUNX1T1
Chinese Name:	周期素D相关蛋白抗体
Alias:	Acute myelogenous leukemia 1 translocation 1 cyclin D related; Acute myelogenous leukemia 1 translocation 1 protein; AML1T1; CBFA2T1; CDR; Core binding factor runt domain alpha subunit 2 translocated to 1; Core binding factor runt domain alpha subunit 2 translocated to 1 cyclin D related; Cyclin D related; Cyclin D related protein; Eight twenty one protein; Eighth twenty one protein; ETO; ETO protein; MTG 8; MTG 8b; MTG8. MTG8 protein; MTG8b antibody Myeloid translocation gene on 8q22; Protein CBFA2T1; Protein ETO; Protein MTG 8; Protein MTG8; Runt related transcription factor 1 translocated to 1 (cyclin D related); Runt related transcription factor 1 translocated to 1; Runt related transcription factor 1 translocated to 1 cyclin D related; Zinc finger MYND domain containing protein 2; ZMYND 2; ZMYND2.
Organism Species:	Rabbit
Clonality:	Polyclonal
React Species:	Human,Mouse,Rat,Chicken,Dog,Pig,Horse,Rabbit,
Applications:	WB=1:500-2000ELISA=1:500-1000IHC-P=1:400-800 (Paraffin sections need antigen repair) not yet tested in other applications. optimal dilutions/concentrations should be determined by the end user.
Molecular weight:	66kDa
Cellular localization:	The nucleus
Form:	Lyophilized or Liquid
Concentration:	1mg/ml
immunogen:	KLH conjugated synthetic peptide derived from human RUNX1T1/ETO:431-530/604
Lsotype:	IgG
Purification:	affinity purified by Protein A
Storage Buffer:	0.01M TBS(pH7.4) with 1% BSA, 0.03% Proclin300 and 50% Glycerol.
Storage:	Store at -20 °C for one year. Avoid repeated freeze/thaw cycles. The lyophilized antibody is stable at room temperature for at least one month and for greater than a year when kept at -20°C. When reconstituted in sterile pH 7.4 0.01M PBS or diluent of

	antibody the antibody is stable for at least two weeks at 2-4 °C.
PubMed:	PubMed
Product Detail:	<p>RUNX1T1 is a putative zinc finger transcription factor and oncoprotein. In acute myeloid leukemia, especially in the M2 subtype, the t(8;21)(q22;q22) translocation is one of the most frequent karyotypic abnormalities. The translocation produces a chimeric gene made up of the 5'-region of the RUNX1 gene fused to the 3'-region of this gene. The chimeric protein is thought to associate with the nuclear corepressor/histone deacetylase complex to block hematopoietic differentiation. Several transcript variants encoding multiple isoforms have been found for this gene.</p> <p>Subunit: Homotetramer. Heterotetramer with CBFA2T2 and CBFA2T3. Interacts with TCF12, SIN3A, HDAC1, HDAC2, HDAC3, NCOR1 and NCOR2. Interacts with ATN1 (via its N-terminus); the interaction enhances the transcriptional repression.</p> <p>Subcellular Location: Nucleus.</p> <p>Tissue Specificity: Most abundantly expressed in brain. Lower levels in lung, heart, testis and ovary.</p> <p>Similarity: Belongs to the CBFA2T family. Contains 1 MYND-type zinc finger. Contains 1 TAFH (NHR1) domain.</p> <p>SWISS: Q06455</p> <p>Gene ID: 862</p> <p>Database links: Entrez Gene: 862Human Entrez Gene: 12395Mouse Entrez Gene: 362489Rat Omim: 133435Human SwissProt: Q06455Human SwissProt: Q61909Mouse Unigene: 368431Human</p>

[Unigene: 470961](#)Mouse

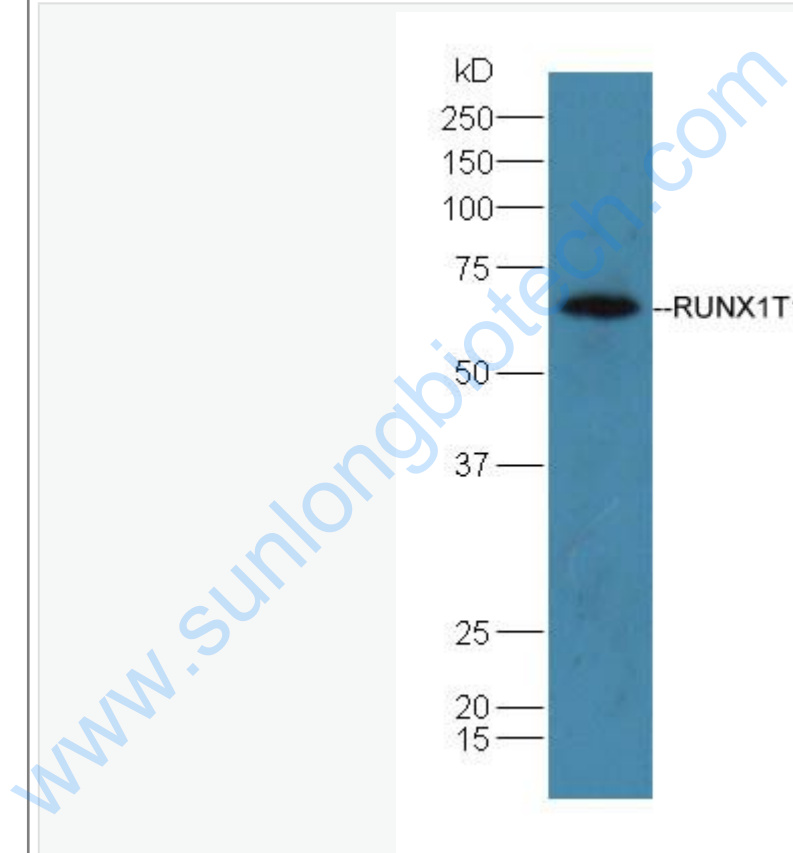
[Unigene: 4909](#)Mouse

[Unigene: 218117](#)Rat

Important Note:

This product as supplied is intended for research use only, not for use in human, therapeutic or diagnostic applications.

Picture:



Sample: Brain (Mouse) Lysate at 40 ug

Primary: Anti-RUNX1T1 (SL6101R) at 1/300 dilution

Secondary: HRP conjugated Goat-Anti-rabbit IgG (SL6101R) at 1/5000 dilution

Predicted band size: 66 kD

Observed band size: 66 kD

