



Rabbit Anti-SEZ6L antibody

SL6103R

Product Name:	SEZ6L
Chinese Name:	癫痫样相关蛋白6抗体
Alias:	Seizure 6 like protein; Seizure related 6 homolog (mouse) like; Seizure related gene 6 (mouse) like; Seizure related gene 6 like; SE6L1_HUMAN.
Organism Species:	Rabbit
Clonality:	Polyclonal
React Species:	Human,Mouse,Rat,Chicken,Dog,Pig,Cow,Horse,Sheep,
Applications:	WB=1:500-2000ELISA=1:500-1000IHC-P=1:400-800IHC-F=1:400-800IF=1:100-500 (Paraffin sections need antigen repair) not yet tested in other applications. optimal dilutions/concentrations should be determined by the end user.
Molecular weight:	109kDa
Cellular localization:	cytoplasmicThe cell membrane
Form:	Lyophilized or Liquid
Concentration:	1mg/ml
immunogen:	KLH conjugated synthetic peptide derived from human SEZ6L:701-800/1024
Lsotype:	IgG
Purification:	affinity purified by Protein A
Storage Buffer:	0.01M TBS(pH7.4) with 1% BSA, 0.03% Proclin300 and 50% Glycerol.
Storage:	Store at -20 °C for one year. Avoid repeated freeze/thaw cycles. The lyophilized antibody is stable at room temperature for at least one month and for greater than a year when kept at -20°C. When reconstituted in sterile pH 7.4 0.01M PBS or diluent of antibody the antibody is stable for at least two weeks at 2-4 °C.
PubMed:	PubMed
Product Detail:	SEZ6L is a candidate tumor suppressor gene. This protein may contribute to specialized endoplasmic reticulum functions in neurons. Function: May contribute to specialized endoplasmic reticulum functions in neurons

Subcellular Location:

Endoplasmic reticulum membrane; Single-pass type I membrane protein

Tissue Specificity:

Widely expressed, including adult and fetal brains and lungs. Not expressed in all lung cancer cell lines.

Similarity:

Belongs to the SEZ6 family.

Contains 3 CUB domains.

Contains 5 Sushi (CCP/SCR) domains.

SWISS:

Q9BYH1

Gene ID:

23544

Database links:

[Entrez Gene: 23544](#)Human

[Entrez Gene: 56747](#)Mouse

[Entrez Gene: 304554](#)Rat

[Omid: 607021](#)Human

[SwissProt: Q9BYH1](#)Human

[SwissProt: Q6P1D5](#)Mouse

[Unigene: 194766](#)Human

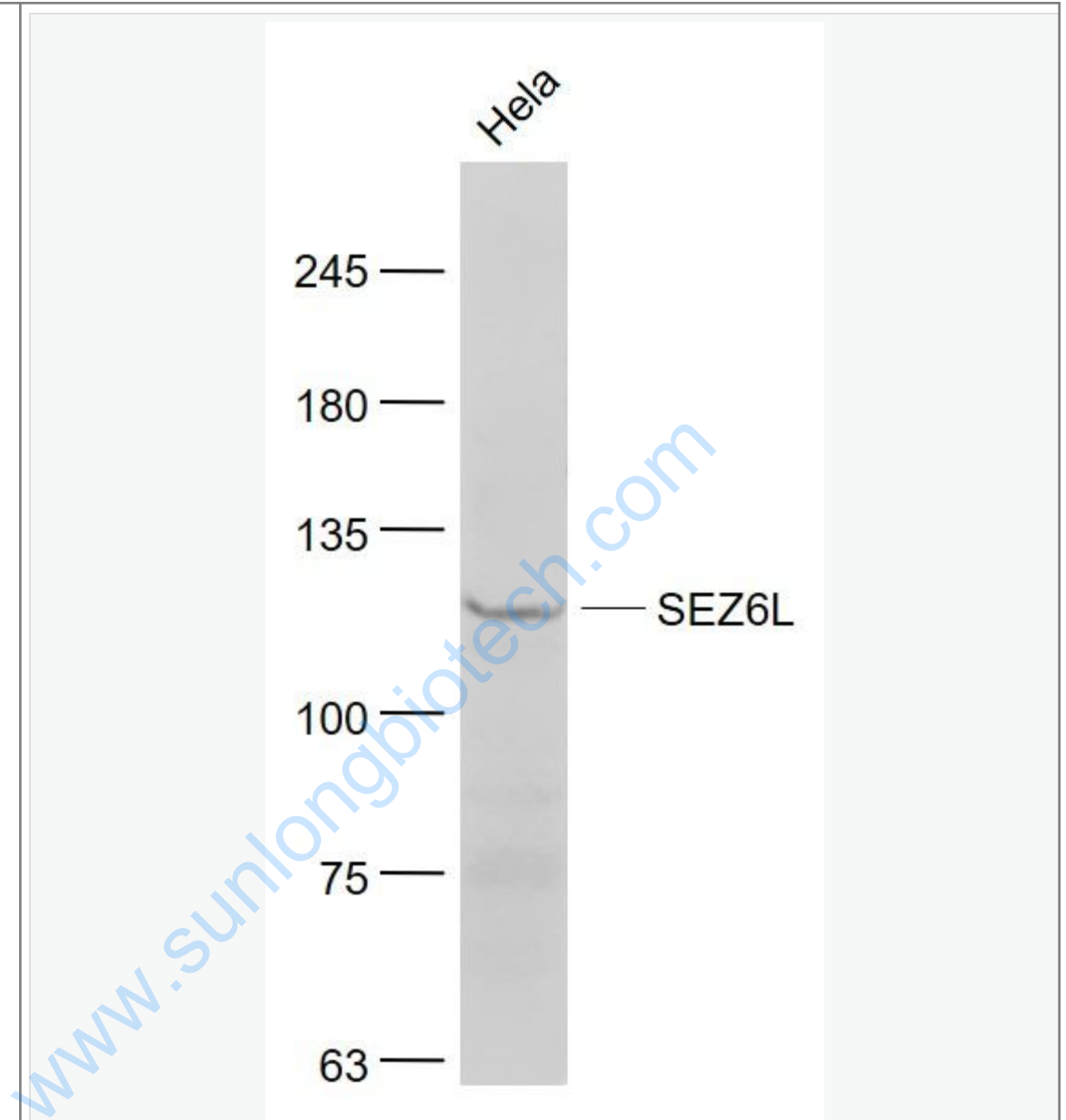
[Unigene: 143742](#)Mouse

[Unigene: 209285](#)Rat

Important Note:

This product as supplied is intended for research use only, not for use in human, therapeutic or diagnostic applications.

Picture:



Sample:

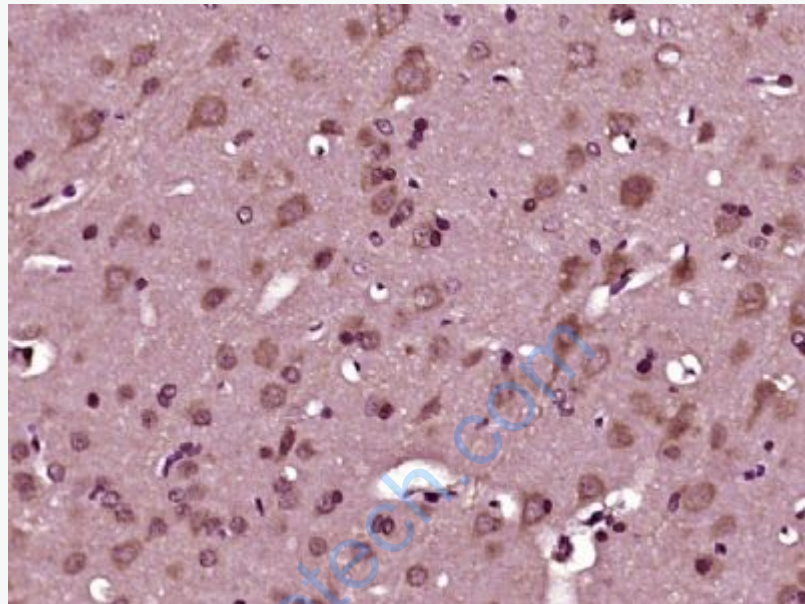
HeLa(Human) Cell Lysate at 30 ug

Primary: Anti- SEZ6L (SL6103R) at 1/1000 dilution

Secondary: IRDye800CW Goat Anti-Rabbit IgG at 1/20000 dilution

Predicted band size: 109 kD

Observed band size: 110 kD



Paraformaldehyde-fixed, paraffin embedded (rat brain tissue); Antigen retrieval by boiling in sodium citrate buffer (pH6.0) for 15min; Block endogenous peroxidase by 3% hydrogen peroxide for 20 minutes; Blocking buffer (normal goat serum) at 37°C for 30min; Antibody incubation with (SEZ6L) Polyclonal Antibody, Unconjugated (SL6103R) at 1:400 overnight at 4°C, followed by operating according to SP Kit(Rabbit) (sp-0023) instructions and DAB staining.