



## Rabbit Anti-TCHP antibody

SL6113R

<b>Product Name:</b>	TCHP
<b>Chinese Name:</b>	抑癌蛋白TCHP抗体
<b>Alias:</b>	TCHP; Trichoplein keratin filament-binding protein; Tumor suppressor protein.
<b>Organism Species:</b>	Rabbit
<b>Clonality:</b>	Polyclonal
<b>React Species:</b>	Human,Mouse,Rat,Dog,Pig,Cow,Horse,
<b>Applications:</b>	ELISA=1:500-1000IHC-P=1:400-800IHC-F=1:400-800IF=1:100-500 (Paraffin sections need antigen repair) not yet tested in other applications. optimal dilutions/concentrations should be determined by the end user.
<b>Molecular weight:</b>	55kDa
<b>Cellular localization:</b>	cytoplasmicThe cell membrane
<b>Form:</b>	Lyophilized or Liquid
<b>Concentration:</b>	1mg/ml
<b>immunogen:</b>	KLH conjugated synthetic peptide derived from human TCHP:401-498/498
<b>Lsotype:</b>	IgG
<b>Purification:</b>	affinity purified by Protein A
<b>Storage Buffer:</b>	0.01M TBS(pH7.4) with 1% BSA, 0.03% Proclin300 and 50% Glycerol.
<b>Storage:</b>	Store at -20 °C for one year. Avoid repeated freeze/thaw cycles. The lyophilized antibody is stable at room temperature for at least one month and for greater than a year when kept at -20°C. When reconstituted in sterile pH 7.4 0.01M PBS or diluent of antibody the antibody is stable for at least two weeks at 2-4 °C.
<b>PubMed:</b>	<a href="#">PubMed</a>
<b>Product Detail:</b>	<b>Function:</b> A tumour suppressor protein which may act as a 'capping' or 'branching' protein for keratin filaments in the cell periphery. Tumor suppressor which has the ability to inhibit cell growth and be pro-apoptotic during cell stress. Inhibits cell growth in bladder and prostate cancer cells by a down-regulation of HSPB1 by inhibiting its phosphorylation. May act as a 'capping' or

'branching' protein for keratin filaments in the cell periphery. May regulate K8/K18 filament and desmosome organization mainly at the apical or peripheral regions of simple epithelial cells.

**Subunit:**

Interacts specifically with keratin proteins including, KRT5, KRT6A, KRT8, KRT14, KRT16 and KRT18.

**Subcellular Location:**

Cytoplasm, cytoskeleton. Cytoplasm. Cell membrane. Mitochondrion.

**Tissue Specificity:**

Expressed at high levels in normal urothelial and breast epithelial cells. Also expressed in the smooth muscle and endothelial cells. Reduced expression seen in advanced bladder and breast carcinomas (at protein level). Ubiquitous. Expressed at highest levels in the heart, skeletal muscle, kidney, liver and testis.

**Similarity:**

Belongs to the TCHP family.

**SWISS:**

Q9BT92

**Gene ID:**

84260

**Database links:**

[Entrez Gene: 84260](#) Human

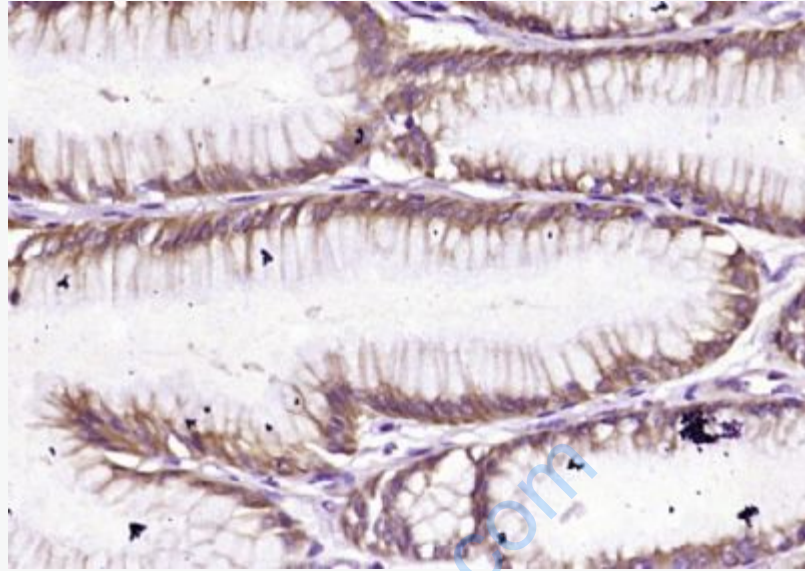
[Omim: 612654](#) Human

[SwissProt: Q9BT92](#) Human

[Unigene: 410924](#) Human

**Important Note:**

This product as supplied is intended for research use only, not for use in human, therapeutic or diagnostic applications.



**Picture:**

Paraformaldehyde-fixed, paraffin embedded (human gastric carcinoma); Antigen retrieval by boiling in sodium citrate buffer (pH6.0) for 15min; Block endogenous peroxidase by 3% hydrogen peroxide for 20 minutes; Blocking buffer (normal goat serum) at 37°C for 30min; Antibody incubation with (TCHP) Polyclonal Antibody, Unconjugated (SL6113R) at 1:400 overnight at 4°C, followed by operating according to SP Kit(Rabbit) (sp-0023) instructions and DAB staining.