



Rabbit Anti-Wnt6 antibody

SL6135R

| | |
|-------------------------------|---|
| Product Name: | Wnt6 |
| Chinese Name: | 信号通路Wnt6抗体 |
| Alias: | Protein Wnt-6 precursor; WINGLESS-TYPE MMTV INTEGRATION SITE FAMILY, MEMBER 6; wnt 6; WNT6_HUMAN. |
| Organism Species: | Rabbit |
| Clonality: | Polyclonal |
| React Species: | Human,Mouse,Rat, |
| Applications: | WB=1:500-2000ELISA=1:500-1000IHC-P=1:400-800IHC-F=1:400-800IF=1:100-500 (Paraffin sections need antigen repair) not yet tested in other applications. optimal dilutions/concentrations should be determined by the end user. |
| Molecular weight: | 38kDa |
| Cellular localization: | Extracellular matrixSecretory protein |
| Form: | Lyophilized or Liquid |
| Concentration: | 1mg/ml |
| immunogen: | KLH conjugated synthetic peptide derived from human Wnt6:281-365/365 |
| Lsotype: | IgG |
| Purification: | affinity purified by Protein A |
| Storage Buffer: | 0.01M TBS(pH7.4) with 1% BSA, 0.03% Proclin300 and 50% Glycerol. |
| Storage: | Store at -20 °C for one year. Avoid repeated freeze/thaw cycles. The lyophilized antibody is stable at room temperature for at least one month and for greater than a year when kept at -20°C. When reconstituted in sterile pH 7.4 0.01M PBS or diluent of antibody the antibody is stable for at least two weeks at 2-4 °C. |
| PubMed: | PubMed |
| Product Detail: | Wnt6 is a member of the WNT protein family. These proteins have been implicated in oncogenesis and in several developmental processes, including regulation of cell fate and patterning during embryogenesis. Wnt6 is overexpressed in cervical and breast cell carcinomas and is co-expressed with Wnt10a in colorectal cancer cell lines. |
| | Subunit: |

Interacts with PORCN.

Subcellular Location:

Secreted, extracellular space, extracellular matrix.

Similarity:

Belongs to the Wnt family.

SWISS:

Q9Y6F9

Gene ID:

7475

Database links:

[Entrez Gene: 7475](#)Human

[Entrez Gene: 22420](#)Mouse

[Entrez Gene: 316526](#)Rat

[Oimim: 604663](#)Human

[SwissProt: Q9Y6F9](#)Human

[SwissProt: P22727](#)Mouse

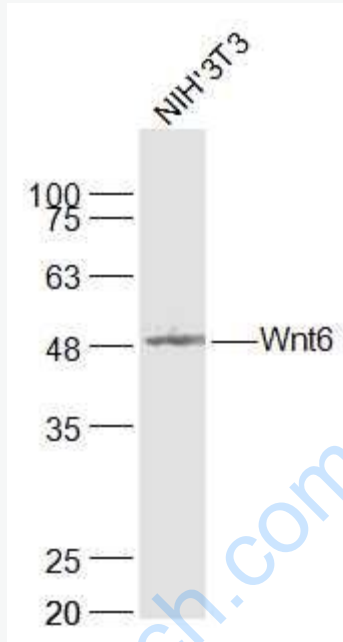
[Unigene: 29764](#)Human

[Unigene: 268282](#)Mouse

Important Note:

This product as supplied is intended for research use only, not for use in human, therapeutic or diagnostic applications.

Picture:



Sample:

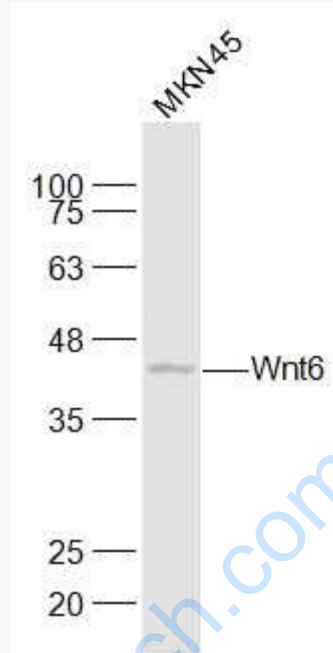
NIH/3T3(Mouse) Cell Lysate at 30 ug

Primary: Anti-Wnt6 (SL6135R) at 1/1000 dilution

Secondary: IRDye800CW Goat Anti-Rabbit IgG at 1/20000 dilution

Predicted band size: 38 kD

Observed band size: 48 kD



Sample:

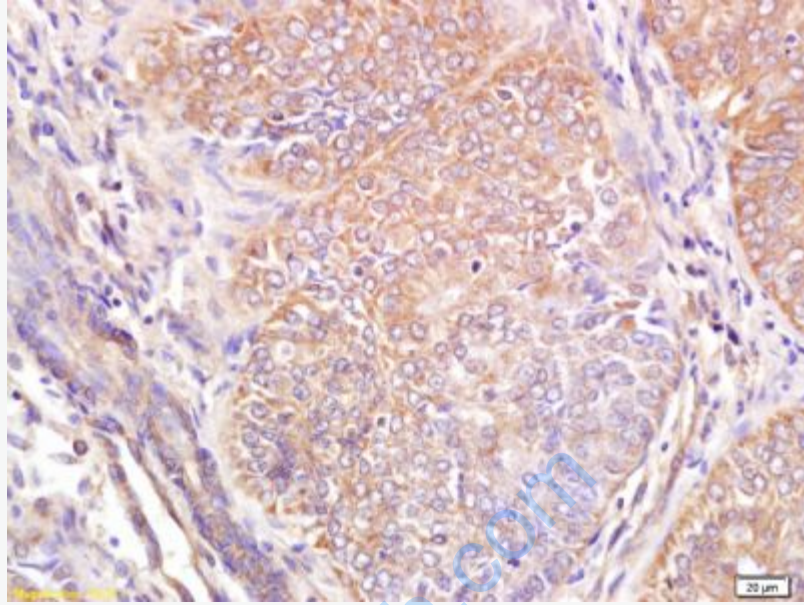
MKN45(Human) Cell Lysate at 30 ug

Primary: Anti-Wnt6 (SL6135R) at 1/1000 dilution

Secondary: IRDye800CW Goat Anti-Rabbit IgG at 1/20000 dilution

Predicted band size: 38 kD

Observed band size: 42 kD



Tissue/cell: human breast carcinoma; 4% Paraformaldehyde-fixed and paraffin-embedded;

Antigen retrieval: citrate buffer (0.01M, pH 6.0), Boiling bathing for 15min; Block endogenous peroxidase by 3% Hydrogen peroxide for 30min; Blocking buffer (normal goat serum,C-0005) at 37°C for 20 min;

Incubation: Anti-Wnt6 Polyclonal Antibody, Unconjugated(SL6135R) 1:200, overnight at 4°C, followed by conjugation to the secondary antibody(SP-0023) and DAB(C-0010) staining