



Rabbit Anti-RASGEF1A antibody

SL6156R

| | |
|-------------------------------|---|
| Product Name: | RASGEF1A |
| Chinese Name: | 鸟嘌呤核苷酸交换因子rasgef1a抗体 |
| Alias: | CG4853 gene product; Ras-GEF domain-containing family member 1A; RasGEF domain family, member 1A; rasgef1a; RGF1A_HUMAN; RASGEF 1A; RASGEF1A. |
| Organism Species: | Rabbit |
| Clonality: | Polyclonal |
| React Species: | Human,Mouse,Rat,Dog,Pig,Cow,Horse,Guinea Pig, |
| Applications: | ELISA=1:500-1000IHC-P=1:400-800IHC-F=1:400-800IF=1:100-500 (Paraffin sections need antigen repair) not yet tested in other applications. optimal dilutions/concentrations should be determined by the end user. |
| Molecular weight: | 53kDa |
| Cellular localization: | cytoplasmic |
| Form: | Lyophilized or Liquid |
| Concentration: | 1mg/ml |
| immunogen: | KLH conjugated synthetic peptide derived from human RASGEF1A:301-200/481 |
| Lsotype: | IgG |
| Purification: | affinity purified by Protein A |
| Storage Buffer: | 0.01M TBS(pH7.4) with 1% BSA, 0.03% Proclin300 and 50% Glycerol. |
| Storage: | Store at -20 °C for one year. Avoid repeated freeze/thaw cycles. The lyophilized antibody is stable at room temperature for at least one month and for greater than a year when kept at -20°C. When reconstituted in sterile pH 7.4 0.01M PBS or diluent of antibody the antibody is stable for at least two weeks at 2-4 °C. |
| PubMed: | PubMed |
| Product Detail: | Guanine nucleotide exchange factor (GEF) with specificity for RAP2A, KRAS, HRAS, and NRAS (in vitro). Plays a role in cell migration. Tissue Specificity: Detected in brain and spinal cord. Highly expressed in a number of intrahepatic cholangiocarcinoma tissue biopsies. |

Similarity:

Contains 1 N-terminal Ras-GEF domain.

Contains 1 Ras-GEF domain.

SWISS:

Q8N9B8

Gene ID:

221002

Database links:

[Entrez Gene: 221002](#)Human

[Entrez Gene: 70727](#)Mouse

[Entrez Gene: 312664](#)Rat

[SwissProt: Q8N9B8](#)Human

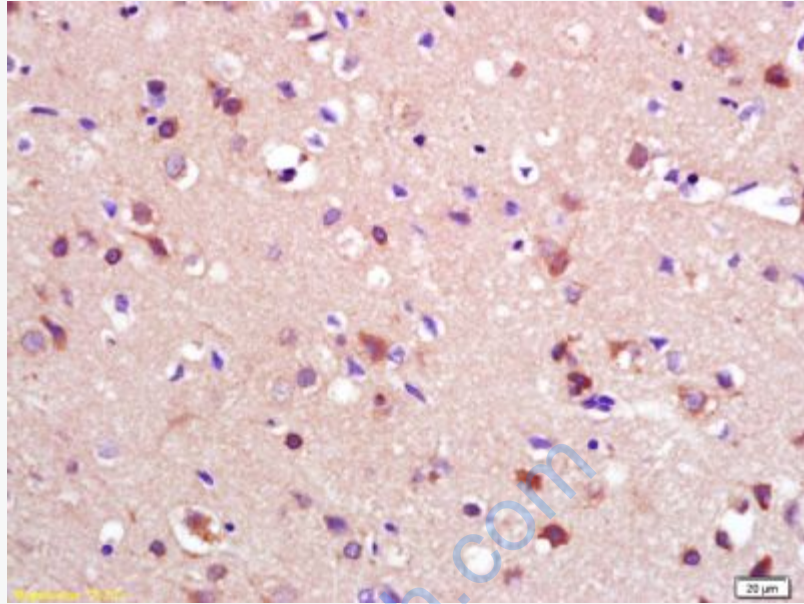
[Unigene: 125293](#)Human

[Unigene: 87660](#)Mouse

[Unigene: 29825](#)Rat

Important Note:

This product as supplied is intended for research use only, not for use in human, therapeutic or diagnostic applications.



Picture:

Tissue/cell: rat brain tissue; 4% Paraformaldehyde-fixed and paraffin-embedded;
Antigen retrieval: citrate buffer (0.01M, pH 6.0), Boiling bathing for 15min; Block endogenous peroxidase by 3% Hydrogen peroxide for 30min; Blocking buffer (normal goat serum,C-0005) at 37°C for 20 min;
Incubation: Anti-RASGEF1A Polyclonal Antibody, Unconjugated(SL6156R) 1:200, overnight at 4°C, followed by conjugation to the secondary antibody(SP-0023) and DAB(C-0010) staining