



## Rabbit Anti-Alpha 2 antiplasmin antibody

SL6188R

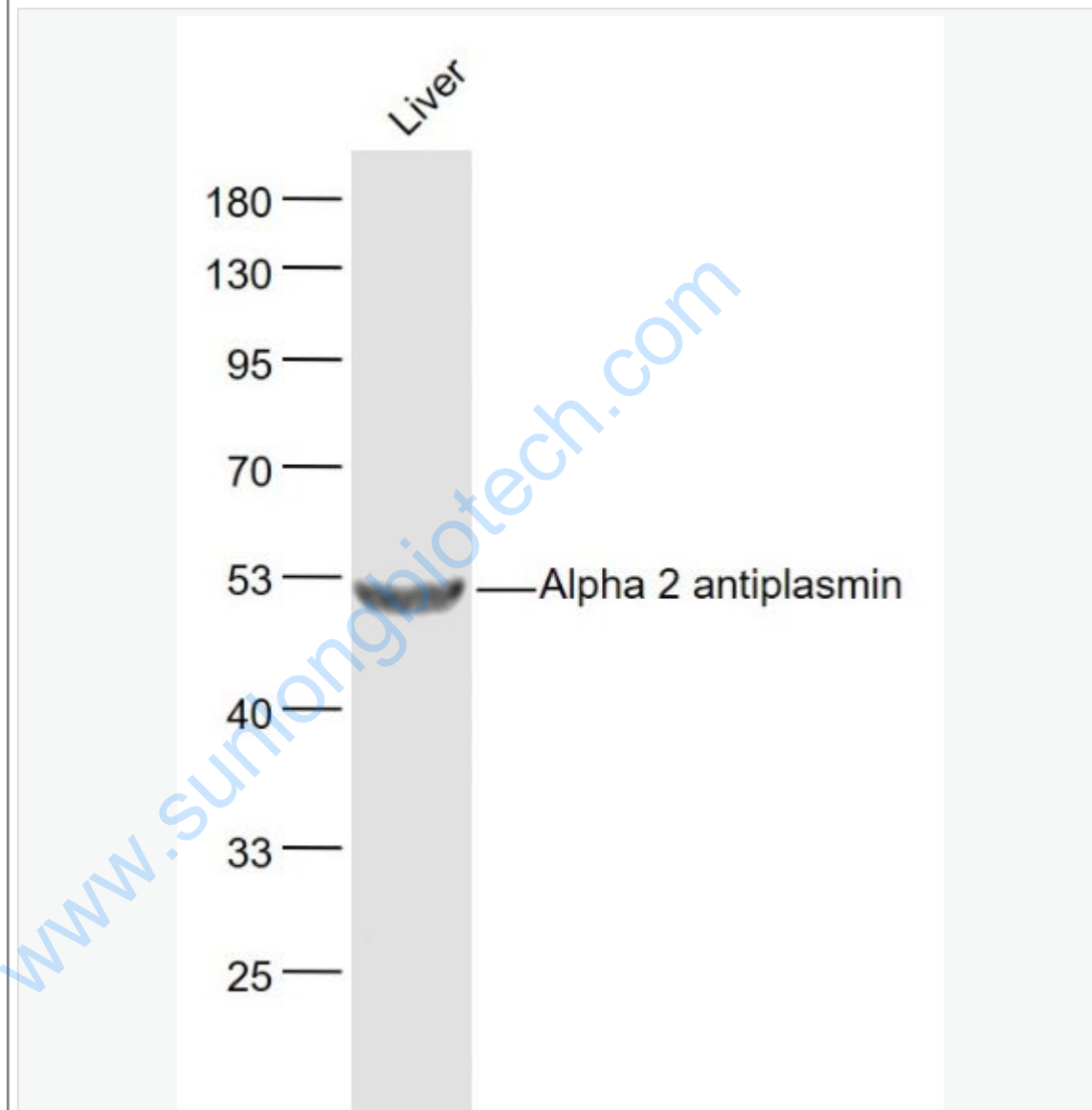
<b>Product Name:</b>	Alpha 2 antiplasmin
<b>Chinese Name:</b>	$\alpha$ 2纤溶酶色素上皮衍生因子抗体
<b>Alias:</b>	A2AP; A2AP_HUMAN; AAP; Alpha 2 antiplasmin; Alpha 2 antiplasmin pigment epithelium derived factor; Alpha 2 AP; ALPHA 2 PI; Alpha 2 plasmin inhibitor; Alpha 2 plasmin inhibitor deficiency; Alpha-2-antiplasmin; Alpha-2-AP; Alpha-2-PI; Alpha-2-plasmin inhibitor; Antiplasmin deficiency; API; Plasmin inhibitor deficiency; PLI; Serine (or cysteine) peptidase inhibitor, clade F, member 2; Serine (Or cysteine) peptidase inhibitor, clade F, member 2, isoform CRA_c; Serine (or cysteine) proteinase inhibitor, clade F (alpha 2 antiplasmin pigment epithelium derived factor) member 2; Serine (Or cysteine) proteinase inhibitor, clade F, member 2; Serine or cysteine peptidase inhibitor clade F member 2; Serpin F2; Serpin peptidase inhibitor clade F; Serpin peptidase inhibitor, clade F (alpha 2 antiplasmin pigment epithelium derived factor) member 2; SERPINF2.
<b>Organism Species:</b>	Rabbit
<b>Clonality:</b>	Polyclonal
<b>React Species:</b>	Human,Mouse,Rat,Dog,Horse,Rabbit,
<b>Applications:</b>	WB=1:500-2000ELISA=1:500-1000IHC-P=1:400-800IHC-F=1:400-800IF=1:100-500 (Paraffin sections need antigen repair) not yet tested in other applications. optimal dilutions/concentrations should be determined by the end user.
<b>Molecular weight:</b>	50kDa
<b>Cellular localization:</b>	Secretory protein
<b>Form:</b>	Lyophilized or Liquid
<b>Concentration:</b>	1mg/ml
<b>immunogen:</b>	KLH conjugated synthetic peptide derived from human SERPINF2:161-260/491
<b>Lsotype:</b>	IgG
<b>Purification:</b>	affinity purified by Protein A
<b>Storage Buffer:</b>	0.01M TBS(pH7.4) with 1% BSA, 0.03% Proclin300 and 50% Glycerol.
<b>Storage:</b>	Store at -20 °C for one year. Avoid repeated freeze/thaw cycles. The lyophilized antibody is stable at room temperature for at least one month and for greater than a year

	when kept at -20°C. When reconstituted in sterile pH 7.4 0.01M PBS or diluent of antibody the antibody is stable for at least two weeks at 2-4 °C.
<b>PubMed:</b>	<a href="#">PubMed</a>
<b>Product Detail:</b>	<p>Alpha 2 Antiplasmin is a member of the serpin family of serine protease inhibitors. The protein is a major inhibitor of plasmin, which degrades fibrin and various other proteins. Consequently, the proper function of this gene has a major role in regulating the blood clotting pathway. Mutations in this gene result in alpha-2-plasmin inhibitor deficiency, which is characterized by severe hemorrhagic diathesis. Multiple transcript variants encoding different isoforms have been found for this gene.</p> <p><b>Function:</b> Serine protease inhibitor. The major targets of this inhibitor are plasmin and trypsin, but it also inactivates matriptase-3/TMPRSS7 and chymotrypsin.</p> <p><b>Subunit:</b> Forms protease inhibiting heterodimer with TMPRSS7.</p> <p><b>Subcellular Location:</b> Secreted.</p> <p><b>Tissue Specificity:</b> Expressed by the liver and secreted in plasma.</p> <p><b>DISEASE:</b> Alpha-2-plasmin inhibitor deficiency (APLID) [MIM:262850]: An autosomal recessive disorder resulting in severe hemorrhagic diathesis. Note=The disease is caused by mutations affecting the gene represented in this entry.</p> <p><b>Similarity:</b> Belongs to the serpin family.</p> <p><b>SWISS:</b> P08697</p> <p><b>Gene ID:</b> 5345</p> <p><b>Database links:</b></p> <p><a href="#">Entrez Gene: 5345</a>Human</p> <p><a href="#">Omim: 613168</a>Human</p> <p><a href="#">SwissProt: P08697</a>Human</p> <p><a href="#">Unigene: 159509</a>Human</p>

**Important Note:**

This product as supplied is intended for research use only, not for use in human, therapeutic or diagnostic applications.

Picture:



Sample:

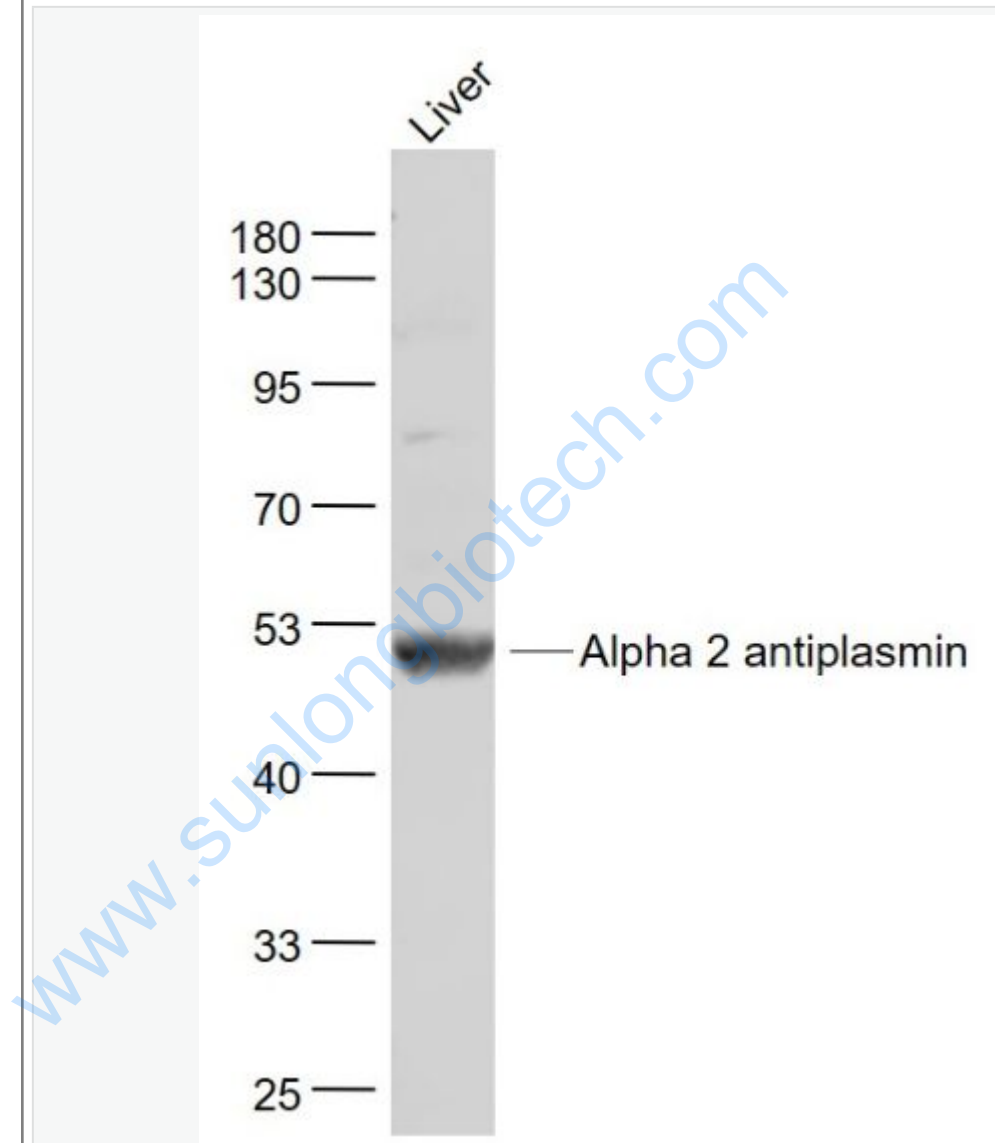
Liver (Mouse) Lysate at 40 ug

Primary: Anti- Alpha 2 antiplasmin (SL6188R) at 1/1000 dilution

Secondary: IRDye800CW Goat Anti-Rabbit IgG at 1/20000 dilution

Predicted band size: 50 kD

Observed band size: 52 kD



Sample:

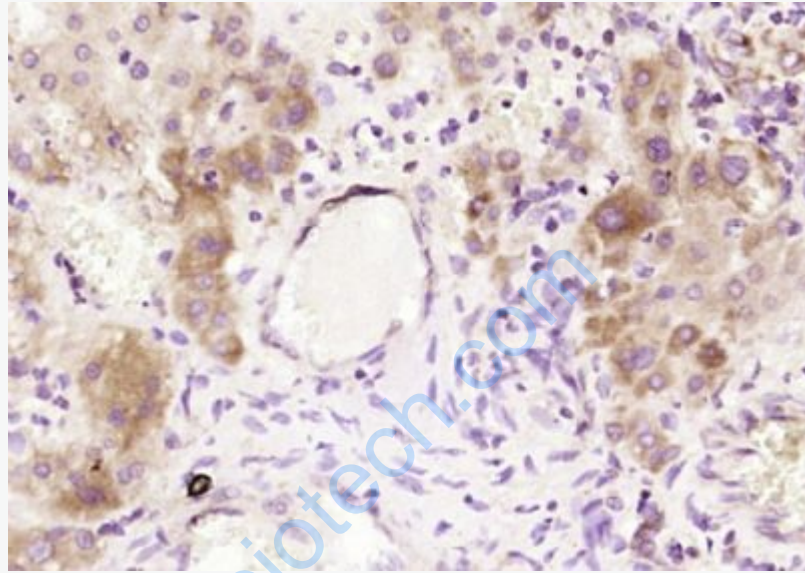
Liver (Mouse) Lysate at 40 ug

Primary: Anti- Alpha 2 antiplasmin (SL6188R) at 1/1000 dilution

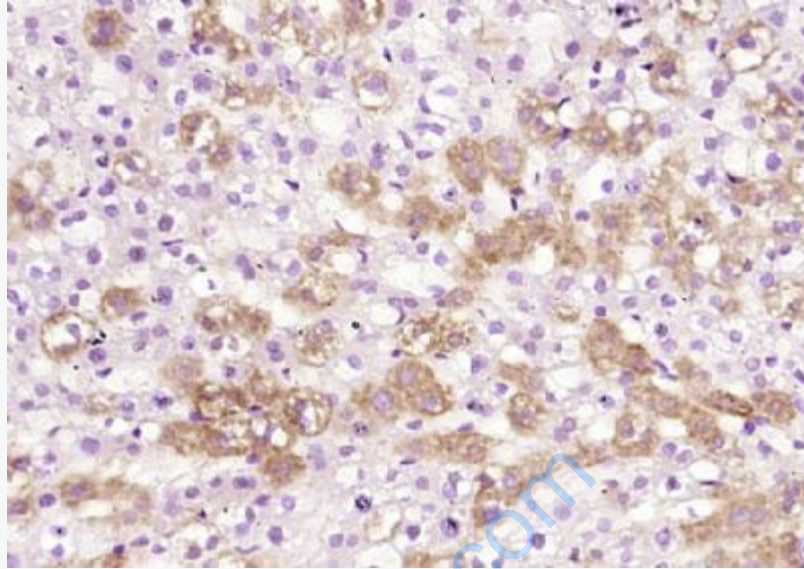
Secondary: IRDye800CW Goat Anti-Rabbit IgG at 1/20000 dilution

Predicted band size: 50 kD

Observed band size: 50 kD



Paraformaldehyde-fixed, paraffin embedded (human liver); Antigen retrieval by boiling in sodium citrate buffer (pH6.0) for 15min; Block endogenous peroxidase by 3% hydrogen peroxide for 20 minutes; Blocking buffer (normal goat serum) at 37°C for 30min; Antibody incubation with (Alpha 2 antiplasmin) Polyclonal Antibody, Unconjugated (SL6188R) at 1:200 overnight at 4°C, followed by operating according to SP Kit(Rabbit) (sp-0023) instructions and DAB staining.



Paraformaldehyde-fixed, paraffin embedded (rat liver); Antigen retrieval by boiling in sodium citrate buffer (pH6.0) for 15min; Block endogenous peroxidase by 3% hydrogen peroxide for 20 minutes; Blocking buffer (normal goat serum) at 37°C for 30min; Antibody incubation with (Alpha 2 antiplasmin) Polyclonal Antibody, Unconjugated (SL6188R) at 1:200 overnight at 4°C, followed by operating according to SP Kit(Rabbit) (sp-0023) instructions and DAB staining.

www.sunngbiotech.com