



Rabbit Anti-TROP2 antibody

SL6198R

Product Name:	TROP2
Chinese Name:	细胞表面glycoproteinTrop2抗体(胰腺癌Marker蛋白)
Alias:	Cell surface glycoprotein Trop 2; Cell surface glycoprotein Trop-2; Cell surface glycoprotein Trop2; Epithelial glycoprotein 1; GA733 1; GA7331; M1S 1; M1S1; Membrane component chromosome 1 surface marker 1; Pancreatic carcinoma marker protein GA733 1; Pancreatic carcinoma marker protein GA733-1; Pancreatic carcinoma marker protein GA7331; TACD 2; TACD2_HUMAN; TACSTD 2; TACSTD2; Trop 2; Trop2; Tumor associated calcium signal transducer 2 precursor; Tumor-associated calcium signal transducer 2.
Organism Species:	Rabbit
Clonality:	Polyclonal
React Species:	Human,Mouse,Rat,Rabbit,
Applications:	WB=1:500-2000ELISA=1:500-1000IHC-P=1:400-800IHC-F=1:400-800IF=1:100-500 (Paraffin sections need antigen repair) not yet tested in other applications. optimal dilutions/concentrations should be determined by the end user.
Molecular weight:	33kDa
Cellular localization:	The cell membrane
Form:	Lyophilized or Liquid
Concentration:	1mg/ml
immunogen:	KLH conjugated synthetic peptide derived from human TROP2/TACD2:221-322/322<Extracellular>
Lsotype:	IgG
Purification:	affinity purified by Protein A
Storage Buffer:	0.01M TBS(pH7.4) with 1% BSA, 0.03% Proclin300 and 50% Glycerol.
Storage:	Store at -20 °C for one year. Avoid repeated freeze/thaw cycles. The lyophilized antibody is stable at room temperature for at least one month and for greater than a year when kept at -20°C. When reconstituted in sterile pH 7.4 0.01M PBS or diluent of antibody the antibody is stable for at least two weeks at 2-4 °C.
PubMed:	PubMed

This intronless gene encodes a carcinoma-associated antigen. This antigen is a cell surface receptor that transduces calcium signals. Mutations of this gene have been associated with gelatinous drop-like corneal dystrophy.[provided by RefSeq, Dec 2009]

Function:

May function as a growth factor receptor.

Subcellular Location:

Membrane; Single-pass type I membrane protein.

Tissue Specificity:

Placenta, pancreatic carcinoma cell lines.

Post-translational modifications:

The N-terminus is blocked.

DISEASE:

Corneal dystrophy, gelatinous drop-like (GDLD) [MIM:204870]: A form of lattice corneal dystrophy, a class of inherited stromal amyloidoses characterized by pathognomonic branching lattice figures in the cornea. GDLD is an autosomal recessive disorder characterized by severe corneal amyloidosis leading to blindness. Clinical manifestations, which appear in the first decade of life, include blurred vision, photophobia, and foreign-body sensation. By the third decade, raised, yellowish-gray, gelatinous masses severely impair visual acuity. Note=The disease is caused by mutations affecting the gene represented in this entry.

Similarity:

Belongs to the EPCAM family.
Contains 1 thyroglobulin type-1 domain.

SWISS:

P09758

Gene ID:

4070

Database links:

[Entrez Gene: 4070](#) Human

[Entrez Gene: 56753](#) Mouse

[Entrez Gene: 494343](#) Rat

[Omim: 137290](#) Human

Product Detail:

[SwissProt: P09758](#) Human

[SwissProt: Q8BGV3](#) Mouse

[SwissProt: Q6P9Z6](#) Rat

[Unigene: 23582](#) Human

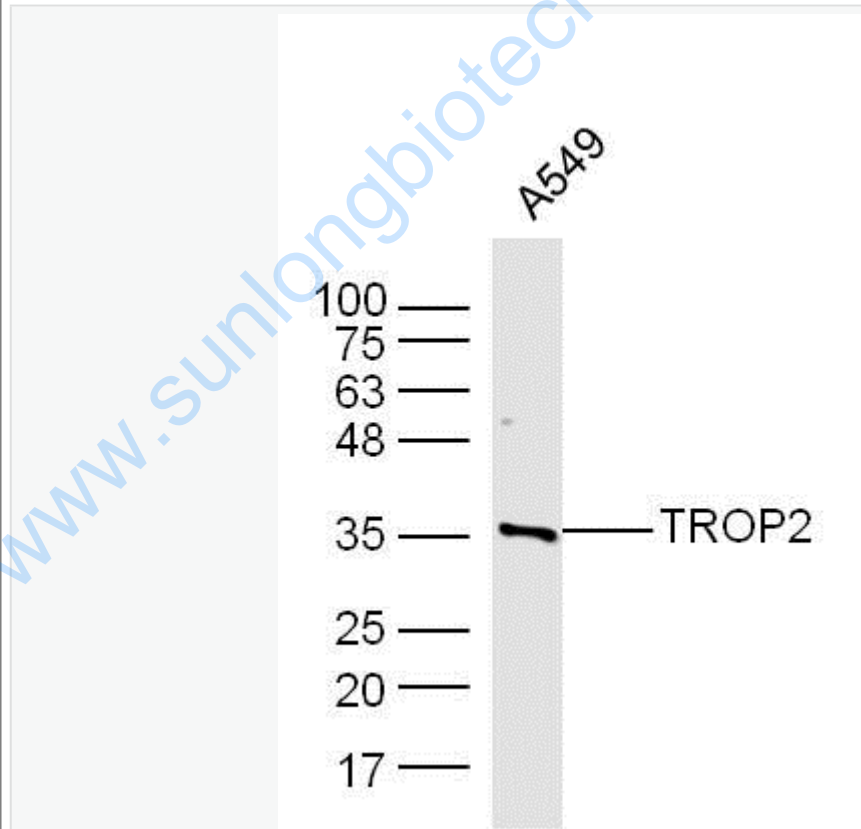
[Unigene: 439913](#) Mouse

[Unigene: 24809](#) Rat

Important Note:

This product as supplied is intended for research use only, not for use in human, therapeutic or diagnostic applications.

Picture:



Sample: A549 Cell (Human) Lysate at 40 ug

Primary: Anti-TROP2 (SL6198R) at 1/300 dilution

Secondary: IRDye800CW Goat Anti-Rabbit IgG at 1/20000 dilution

	<p>Predicted band size: 33 kD</p>
--	-----------------------------------

	<p>Observed band size: 35 kD</p>
--	----------------------------------

www.sunlongbiotech.com