



Rabbit Anti-TMED4 antibody

SL6208R

Product Name:	TMED4
Chinese Name:	Transmembrane proteinTMED4抗体
Alias:	HNLF; Transmembrane emp24 domain containing protein 4; TMED4 HUMAN.
Organism Species:	Rabbit
Clonality:	Polyclonal
React Species:	Human,Mouse,Rat,Pig,Cow,Horse,Rabbit,Sheep,
Applications:	WB=1:500-2000ELISA=1:500-1000IHC-P=1:400-800IHC-F=1:400-800IF=1:100-500 (Paraffin sections need antigen repair) not yet tested in other applications. optimal dilutions/concentrations should be determined by the end user.
Molecular weight:	23kDa
Cellular localization:	cytoplasmicThe cell membrane
Form:	Lyophilized or Liquid
Concentration:	1mg/ml
immunogen:	KLH conjugated synthetic peptide derived from human TMED4:41-140/227
Lsotype:	IgG
Purification:	affinity purified by Protein A
Storage Buffer:	0.01M TBS(pH7.4) with 1% BSA, 0.03% Proclin300 and 50% Glycerol.
Storage:	Store at -20 °C for one year. Avoid repeated freeze/thaw cycles. The lyophilized antibody is stable at room temperature for at least one month and for greater than a year when kept at -20°C. When reconstituted in sterile pH 7.4 0.01M PBS or diluent of antibody the antibody is stable for at least two weeks at 2-4 °C.
PubMed:	PubMed
Product Detail:	<p>TMED4 is a putative NF-kB activating protein belonging to the EMP24/GP25L family, and contains 1 GOLD domain. It is also known as Transmembrane emp24 protein transport domain containing 4.</p> <p>Function: Involved in vesicular protein trafficking, mainly in the early secretory pathway. targeting. Involved in the maintenance of the Golgi apparatus. Appears to play a role in</p>

the biosynthesis of secreted cargo including processing. Involved in endoplasmic reticulum stress response. May play a role in the regulation of heat-shock response and apoptosis

Subcellular Location:

Endoplasmic reticulum membrane; Single-pass type I membrane protein

Similarity:

Belongs to the EMP24/GP25L family.
Contains 1 GOLD domain.

SWISS:

Q7Z7H5

Gene ID:

222068

Database links:

[Entrez Gene: 222068](#)Human

[Entrez Gene: 103694](#)Mouse

[Entrez Gene: 305502](#)Rat

[Omim: 612038](#)Human

[SwissProt: Q7Z7H5](#)Human

[SwissProt: Q8R1V4](#)Mouse

[Unigene: 598832](#)Human

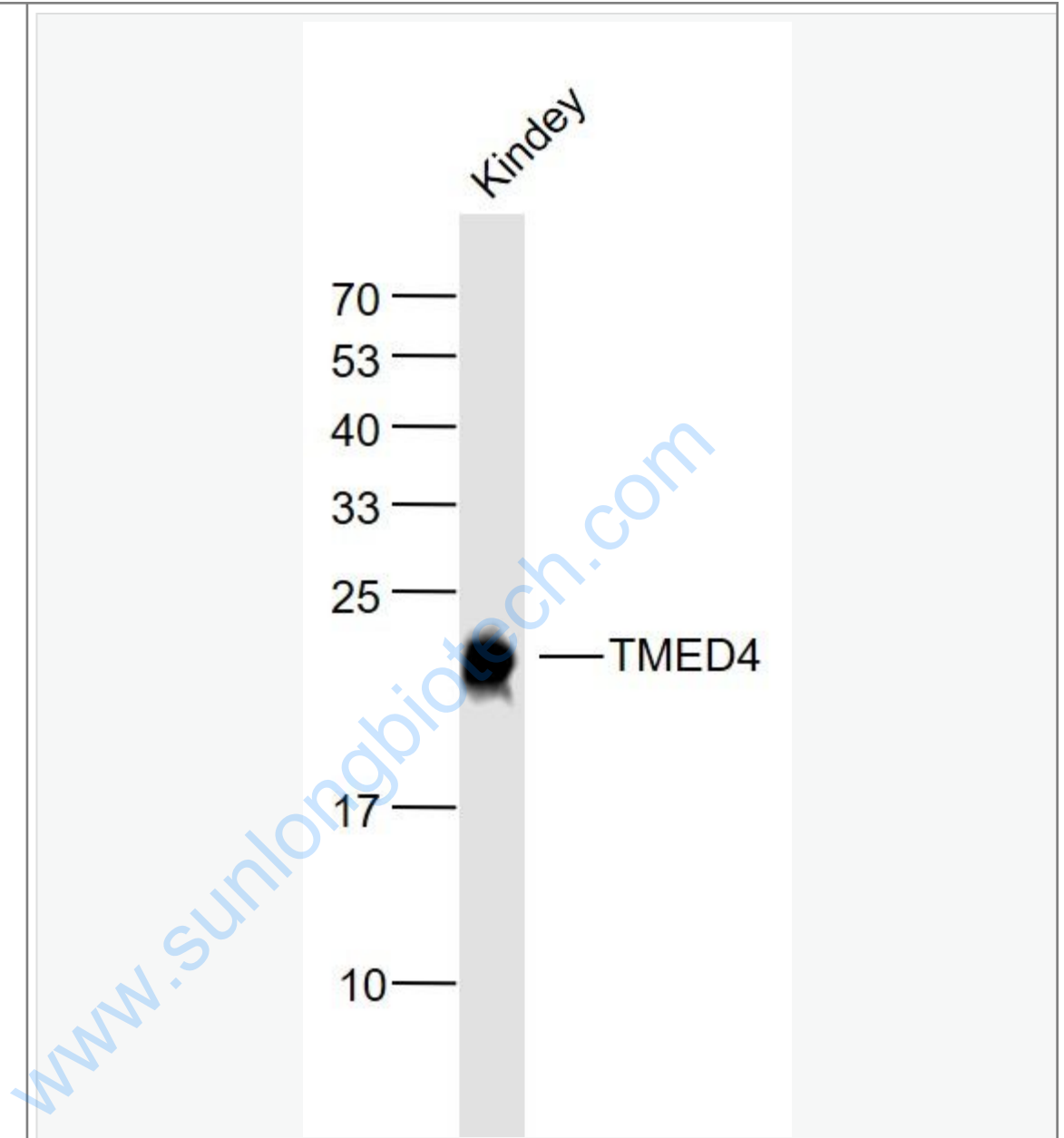
[Unigene: 715273](#)Human

[Unigene: 254495](#)Mouse

Important Note:

This product as supplied is intended for research use only, not for use in human, therapeutic or diagnostic applications.

Picture:



Sample:

Kindey (Mouse) Lysate at 40 ug

Primary: Anti-TMED4 (SL6208R) at 1/1000 dilution

Secondary: IRDye800CW Goat Anti-Rabbit IgG at 1/20000 dilution

Predicted band size: 23 kD

	Observed band size: 23 kD
--	---------------------------

www.sunlongbiotech.com