



Rabbit Anti-ROR beta antibody

SL6216R

Product Name:	ROR beta
Chinese Name:	维甲酸相关孤儿受体β抗体
Alias:	bA133M9.1; NR1F2; Nuclear receptor ROR-beta; Nuclear receptor RZR beta; Nuclear receptor RZR-beta; Nuclear receptor subfamily 1 group F member 2; OTTHUMP00000021486; RAR related orphan receptor B; RAR related orphan receptor beta; Retinoic acid binding receptor beta; Retinoid-related orphan receptor-beta; ROR BETA; Rorb; RORB_HUMAN; RZR BETA; RZRB.
Organism Species:	Rabbit
Clonality:	Polyclonal
React Species:	Human,Mouse,Rat,Dog,Cow,Horse,Sheep,
Applications:	WB=1:500-2000ELISA=1:500-1000IHC-P=1:400-800IHC-F=1:400-800IF=1:100-500 (Paraffin sections need antigen repair) not yet tested in other applications. optimal dilutions/concentrations should be determined by the end user.
Molecular weight:	53kDa
Cellular localization:	The nucleus
Form:	Lyophilized or Liquid
Concentration:	1mg/ml
immunogen:	KLH conjugated synthetic peptide derived from human RORB:385-470/470
Lsotype:	IgG
Purification:	affinity purified by Protein A
Storage Buffer:	0.01M TBS(pH7.4) with 1% BSA, 0.03% Proclin300 and 50% Glycerol.
Storage:	Store at -20 °C for one year. Avoid repeated freeze/thaw cycles. The lyophilized antibody is stable at room temperature for at least one month and for greater than a year when kept at -20°C. When reconstituted in sterile pH 7.4 0.01M PBS or diluent of antibody the antibody is stable for at least two weeks at 2-4 °C.
PubMed:	PubMed
Product Detail:	ROR beta is a member of the NR1 subfamily of nuclear hormone receptors. It is a DNA-binding protein that can bind as a monomer or as a homodimer to hormone response elements upstream of several genes to enhance the expression of those genes.

The specific functions of this protein are not known, but it has been shown to interact with NM23-2, a nucleoside diphosphate kinase involved in organogenesis and differentiation.

Function:

Orphan nuclear receptor required for normal postnatal development of rod and cone photoreceptor cells. Regulates transcription of OPN1SW in cone photoreceptor cells by binding the sequence 5'-AGGTCA-3' in the OPN1SW promoter (By similarity).

Subcellular Location:

Nucleus (Probable).

Similarity:

Belongs to the nuclear hormone receptor family. NR1 subfamily. Contains 1 nuclear receptor DNA-binding domain.

SWISS:

Q92753

Gene ID:

6096

Database links:

[Entrez Gene: 6096](#)Human

[Entrez Gene: 225998](#)Mouse

[Entrez Gene: 309288](#)Rat

[Omim: 601972](#)Human

[SwissProt: Q92753](#)Human

[SwissProt: Q8R1B8](#)Mouse

[SwissProt: P45446](#)Rat

[Unigene: 494178](#)Human

[Unigene: 234641](#)Mouse

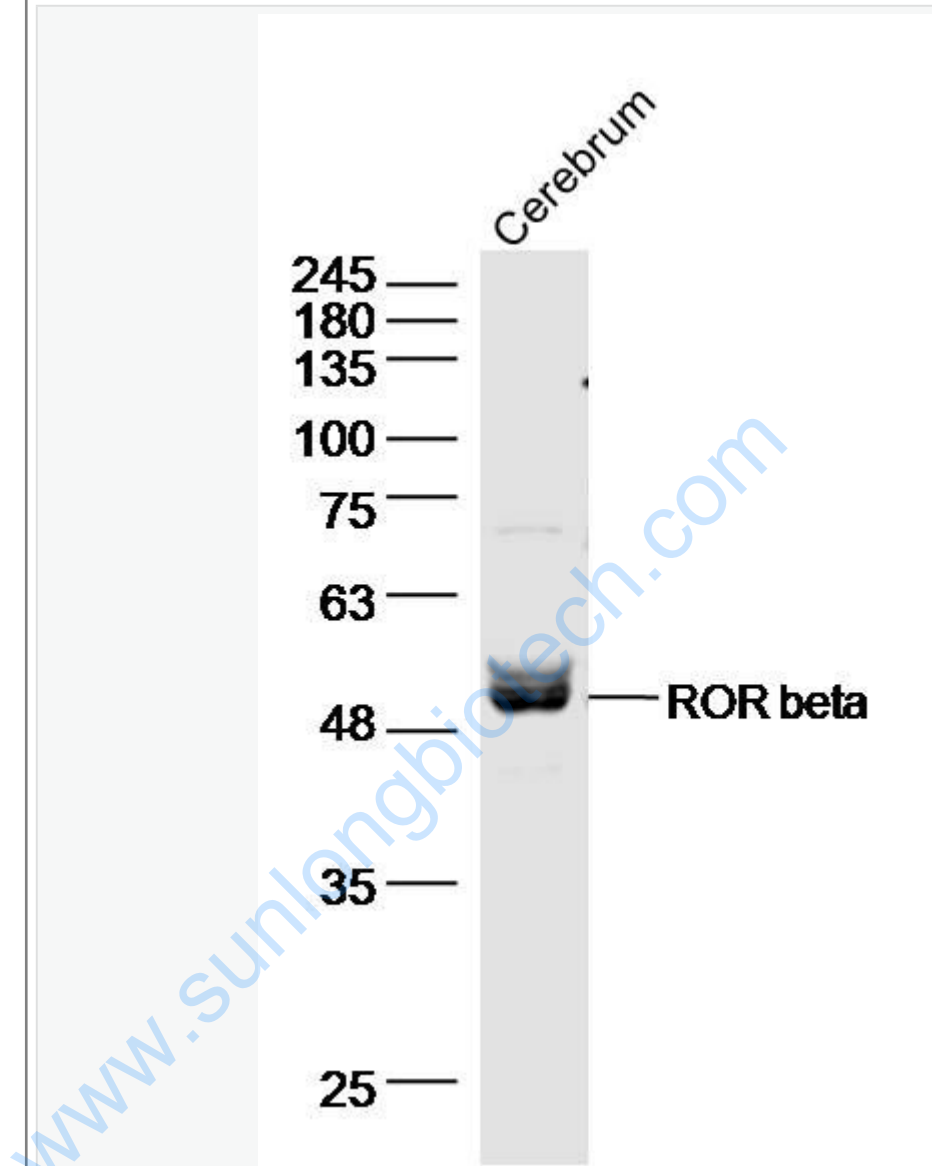
[Unigene: 210157](#)Rat

[Unigene: 231652](#)Rat

Important Note:

This product as supplied is intended for research use only, not for use in human, therapeutic or diagnostic applications.

Picture:



Sample:

cerebrum (Mouse) Lysate at 40 ug

Primary: Anti- ROR beta (SL6216R) at 1/500 dilution

Secondary: IRDye800CW Goat Anti-Rabbit IgG at 1/20000 dilution

Predicted band size: 53 kD

	Observed band size: 53 kD
--	---------------------------

www.sunlongbiotech.com